

## **Southeast Alaska Enhanced Salmon Allocation Update**

The preliminary 2006 harvest allocations and updated five-year moving averages were presented at the Southern, Northern, and Joint Regional Planning Team meeting on April 11<sup>th</sup> in Juneau.

In summary, the percent of the total value of enhanced salmon harvested by the gillnet fleet continued to rise. The percent of the value of enhanced salmon in the seine harvest increased, and the percent of the value of enhanced salmon in the troll harvest declined. The seine fleet harvested approximately 48% of the total estimated value of enhanced salmon in Southeast Alaska, followed by the gillnet fleet 40%, and the troll fleet 12%. Factors that influence these percentages include run size and ex-vessel values. In 2006, the enhanced chum salmon return was one of the largest, the enhanced sockeye return increased, and the enhanced Chinook and coho returns declined from the previous year. The preliminary ex-vessel value for all species increased.

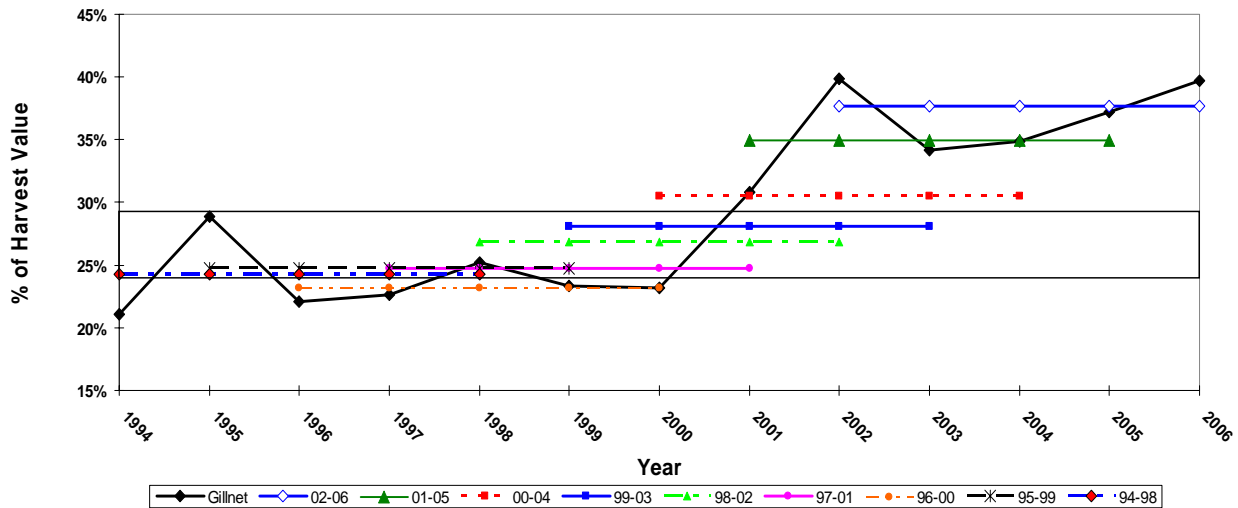
The preliminary five-year (2002-2006) moving allocation average for the gillnet fleet continued its upward trend, climbing to 38% of the estimated value of all enhanced salmon harvested. This is above the gillnet target range of 24-29%. The five-year moving allocation average for the seine fleet increased to 41%, reversing a previously downward trend. The target allocation range for the seine fleet is 44-49%. The five-year moving average for the troll fleet fell to 21%, reversing a previously upward trend. The target allocation range for the troll fleet is 27-32%.

In 2007, the projected returns to salmon enhancement projects include over 14 million chum, 1 million coho, 200,000 sockeye, and 80,000 Chinook. Compared to the estimated enhanced salmon returns in 2006, this is a slight increase in chums, an increase in coho, fewer sockeye, and about the same number of Chinook.

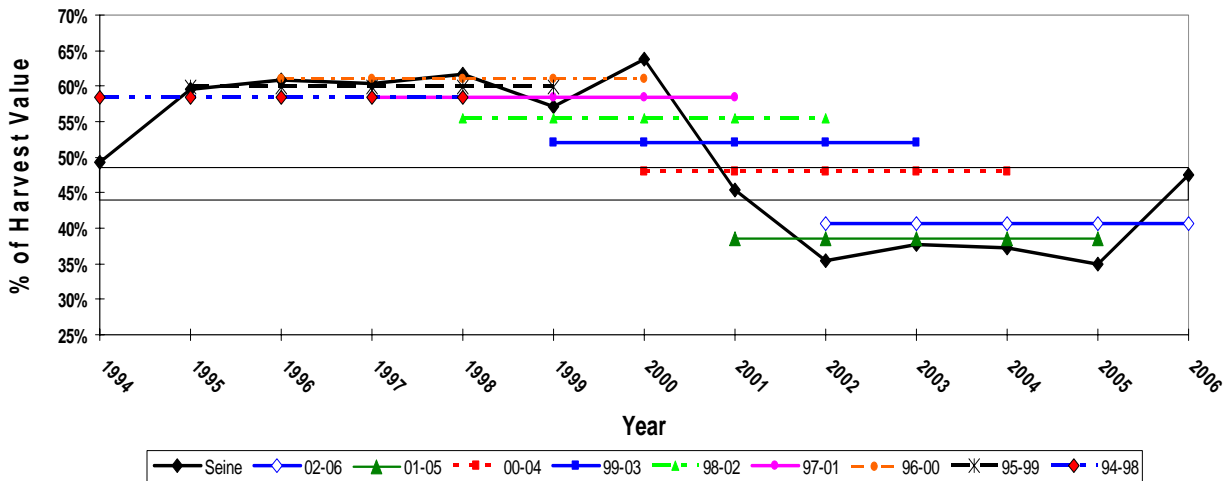
We won't speculate on future allocation shares between the gear groups. History has shown it is difficult to predict abundance and ex-vessel values. A complete summary of the 2006 Alaska Salmon Enhancement Program is available on the ADF&G website:

<http://www.cf.adfg.state.ak.us/geninfo/enhance/enhance.php>.

All SE Enhanced Salmon-Gillnet



All SE Enhanced Salmon-Seine



All SE Enhanced Salmon-Troll

