



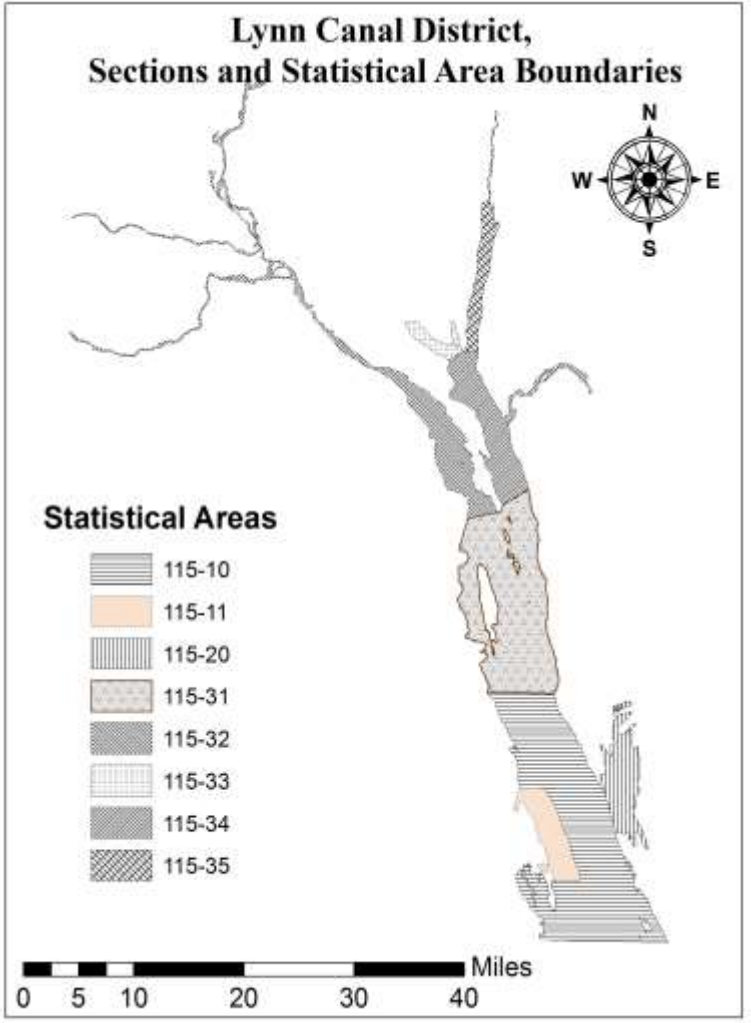
2015 Lynn Canal (District 15) Commercial Drift Gillnet Fishery Season Summary

2015 Drift Gillnet Task Force Meeting
December 2, 2015
Sitka, Alaska

Lower Lynn Canal Gillnet Effort

2015 District 15 Preseason expectations:

- Below average hatchery chum salmon returns to the southern district.
- Below average Chilkat Chinook salmon return. (Chilkat River king salmon MP).
- Above average expected returns of Chilkoot Lake sockeye salmon.
- Average return of Chilkat Lake sockeye salmon.
- Above average Chilkat River mainstem sockeye salmon.
- Average coho salmon return.
- Average Chilkat River drainage fall chum salmon return.
- Average participation in the District.



Summer Management

Fall Management

Table 1.	Stat. Week	Days Open	Boats	Boat Days	Chinook	Sockeye	Coho	Pink	Chum
	25								
	26	2	146	292	225	3111	343	29624	79907
	27	2	153	306	83	2137	261	29394	88496
	28	2(1)	184	552	89	9466	720	171311	255523
	29	2(1)	187	561	65	7943	293	127766	202310
	30	3	127	381	21	10842	190	76906	94672
	31	4	92	368	9	15825	70	59720	53812
	32	3(1)	89	356	10	25662	171	44959	17086
	33	3(1)	80	320	6	23169	331	47063	7821
	34	3	54	162	2	14732	190	22920	3477
	35	3	62	186	2	15818	1248	17644	4466
	36	3	57	171	1	1442	3321	1852	4659
	37	3	64	192	6	1003	6210	49	11771
	38	3	72	216	3	323	6047	1	7743
	39	3	53	159	1	101	3062	0	4053
	40	2	20	40	0	3	999	0	1035
	41								
Fishery Total:		45	217	4,262	523	131,577	23,456	629,209	836,831
2005-2014 Average:		57	184	4,593	1,078	128,728	43,303	184,277	1,042,261
2015 % of Average:		79%	118%	93%	49%	102%	54%	341%	80%

Figure 1. D-15 Drift Gillnet Harvest, 2015 vs. Previous 10-year Average

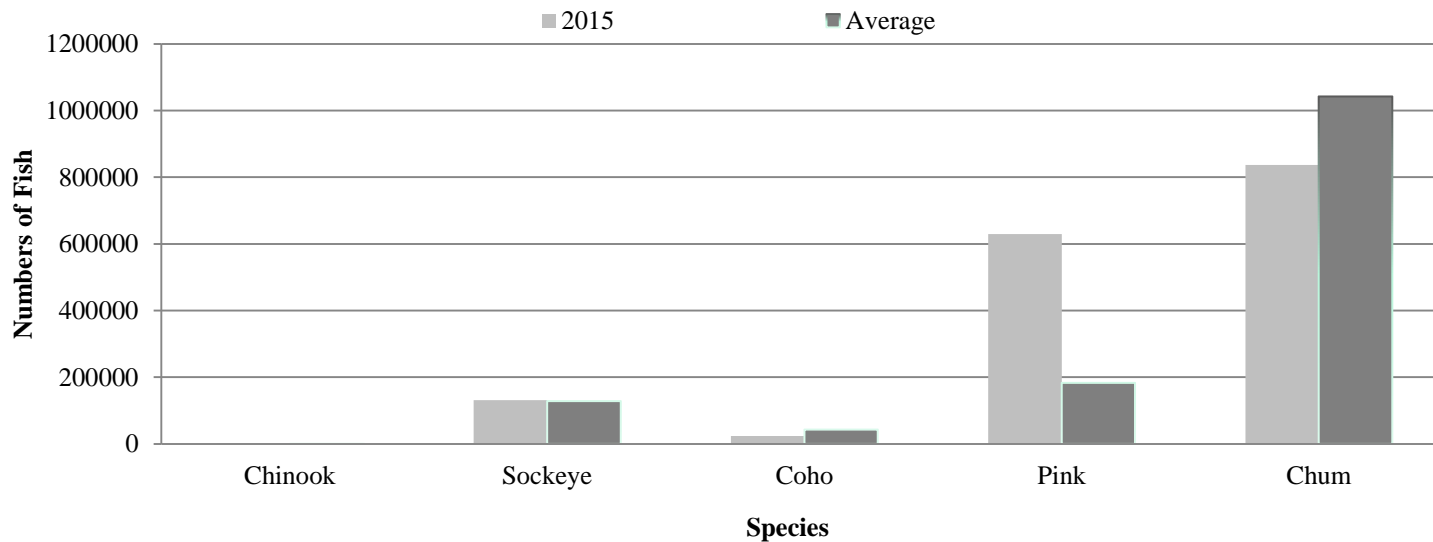


Figure 2. Commercial Harvests of Pacific Salmon in District 15, 1960-2015

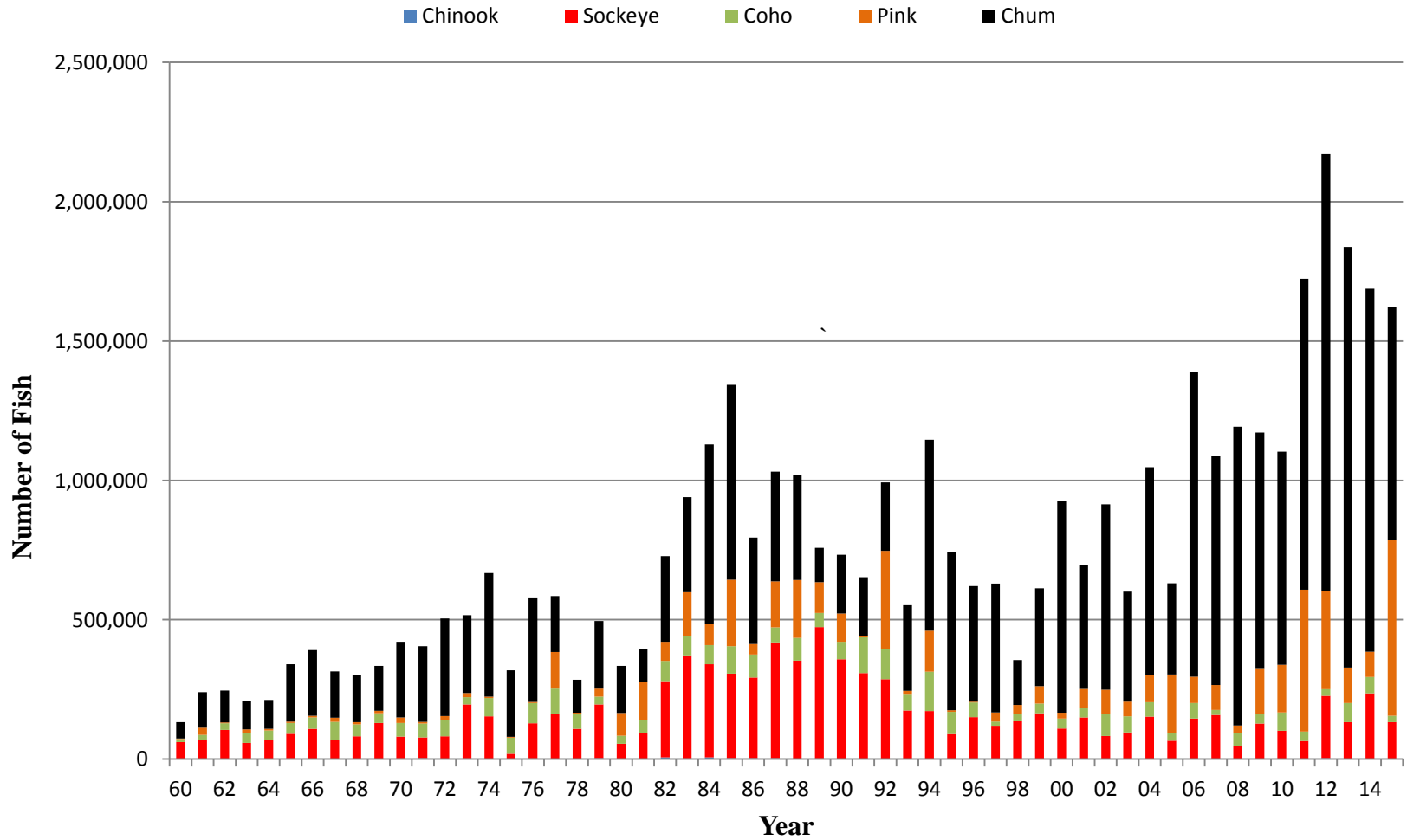
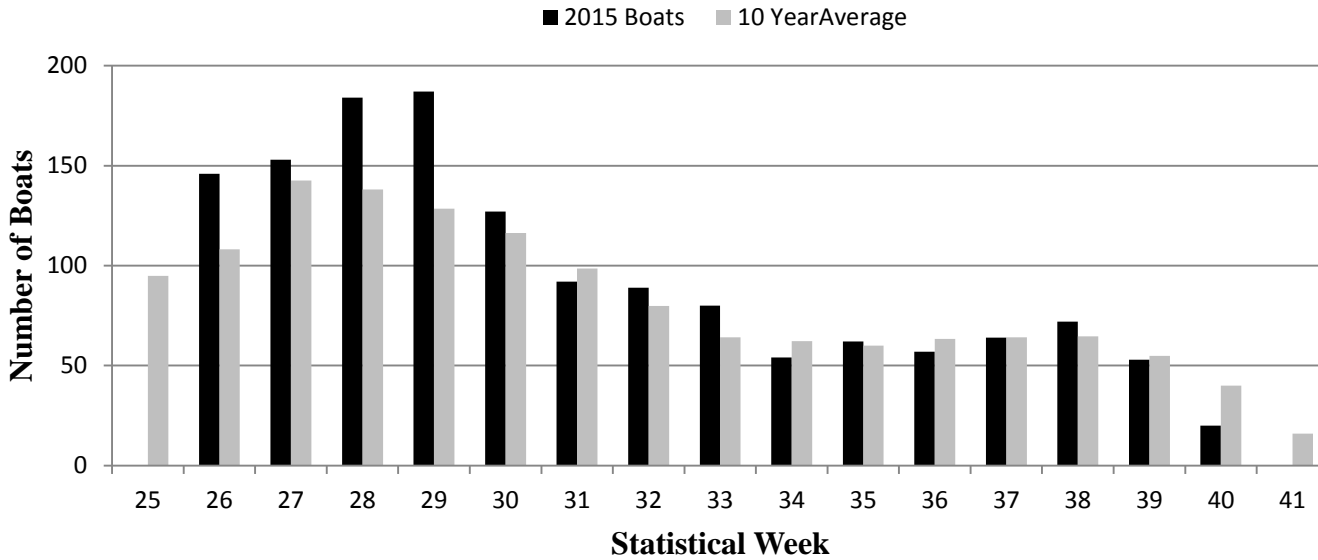


Figure 3. Number of Boats in the D-115 DGN Fishery, 2015



217 unique permits fished D-15 in 2015. 1980-2014 average is 212. 2005-2014 average is 184.

Figure 4. Days and Boat-days in the D-115 DGN Fishery, 2015

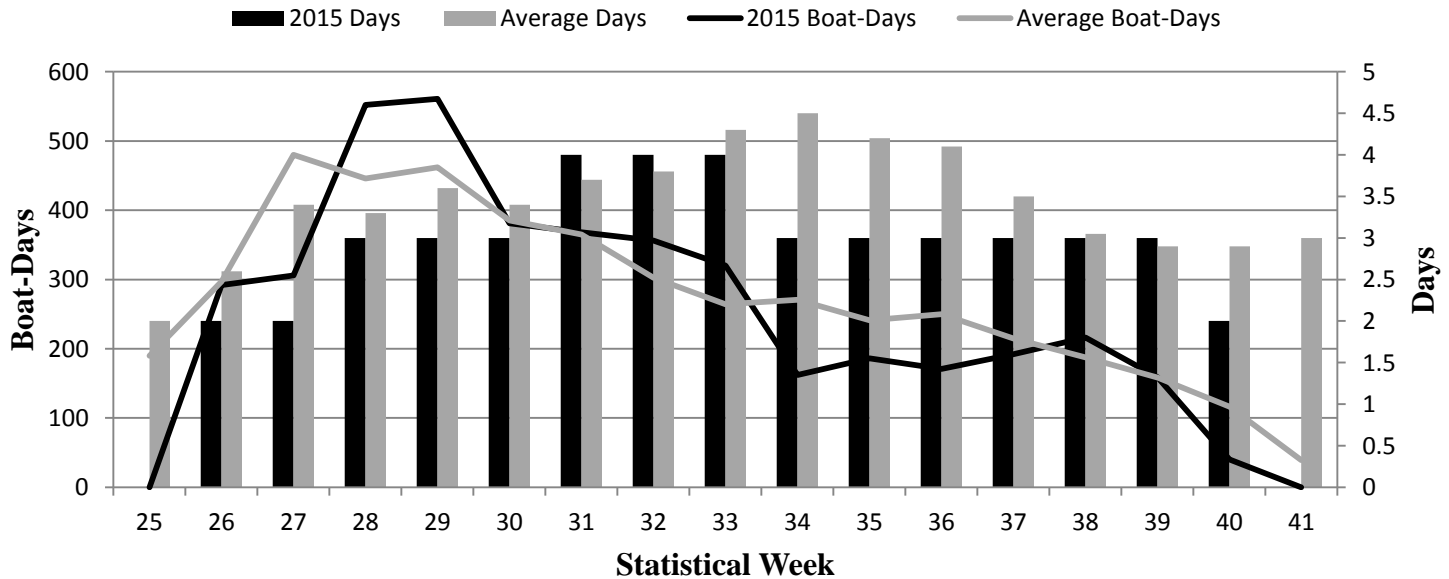
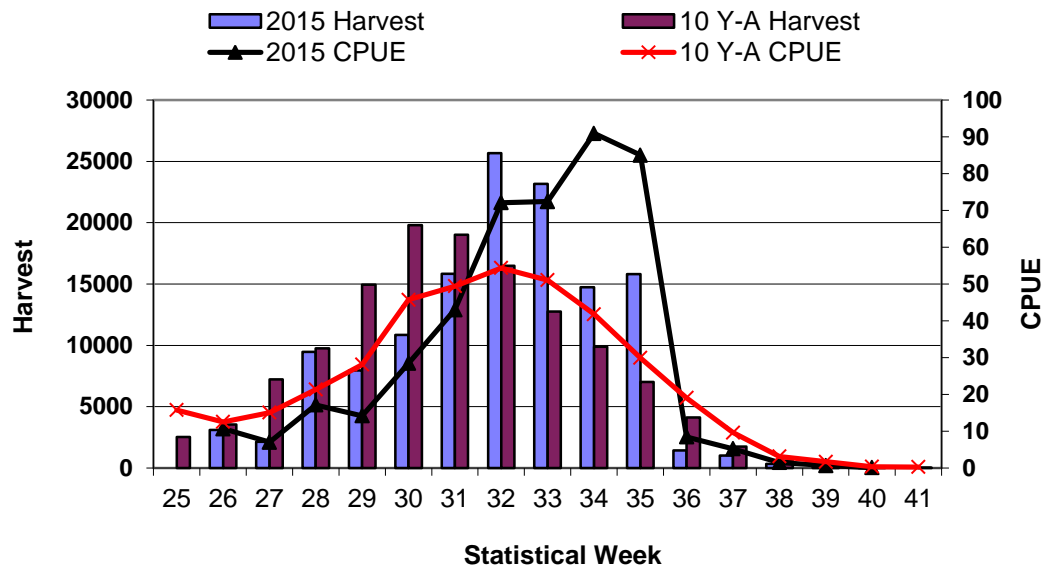


Figure 5. 2015 District 15 Weekly Sockeye Harvest and CPUE



2015 District 15 Sockeye Harvest

- Total sockeye = 131,577 (1.0 times the 10-year average).
- Chilkoot Lake = 58,577 (45%), (1.0 times the 10-year average).
- Chilkat Lake = 33,096 (25%), (0.8 times the 10-year average).
- Others = 39,904 (30%), (1.7 times the 10-year average).

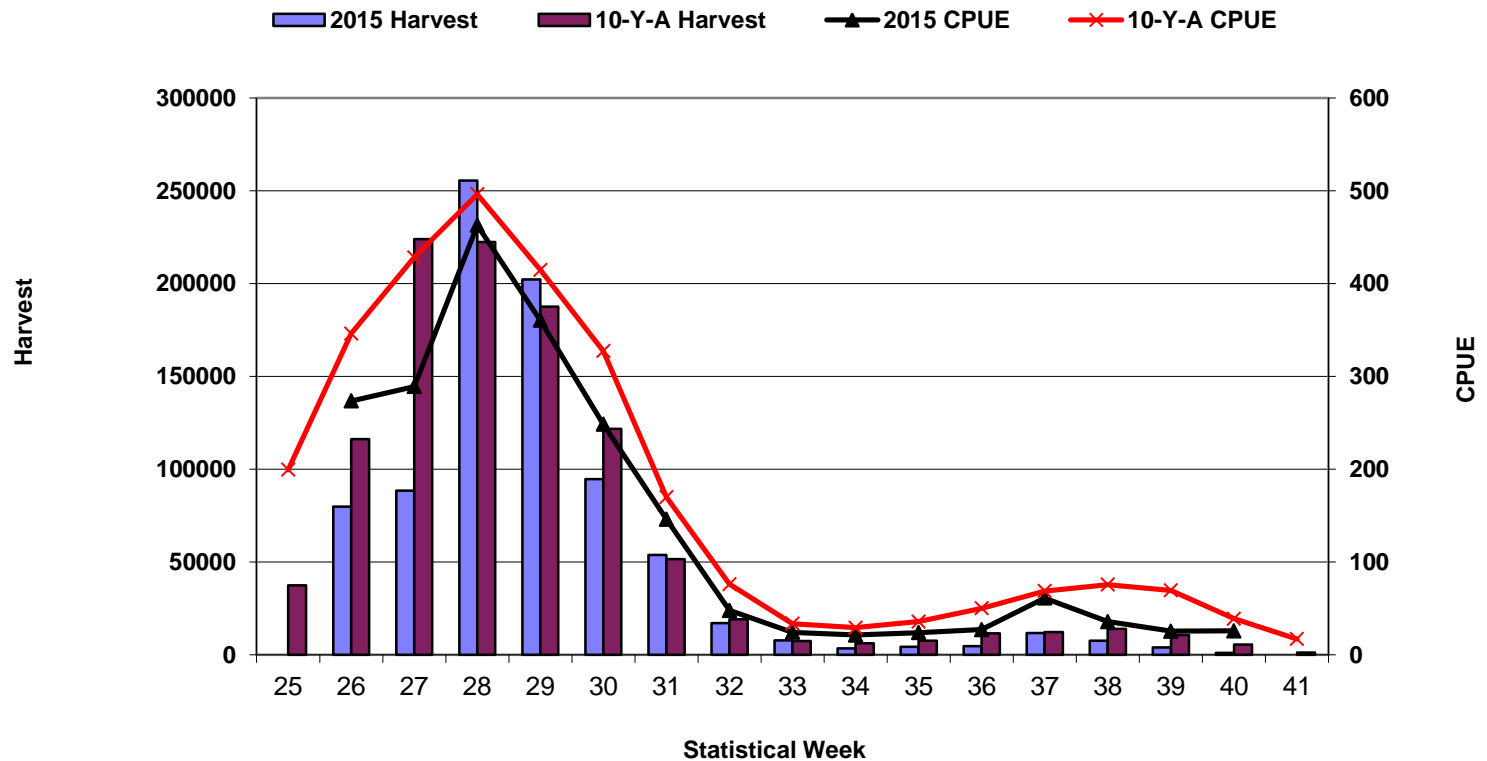
Table 2. 2015 Port sampling D-15 Sockeye commercial catch results.

Stat. week	Sample size	Chilkat	Chilkoot	Other	Total	
26	417	1,044	806	1,261	3,111	
27	484	693	468	976	2,137	
28	481	2,303	2,460	4,703	9,466	
29	433	1,908	3,284	2,752	7,943	
30	435	2,467	4,461	3,913	10,842	
31	478	3,576	8,210	4,039	15,825	
32	445	5,478	12,168	8,016	25,662	
33	436	4,889	9,034	9,246	23,169	
34	410	3,629	9,306	1,797	14,732	
35	397	6,016	7,092	2,709	15,818	
36	Wk 35	548	647	247	1,442	
37	Wk 35	381	450	172	1,003	
38	Wk 35	123	145	55	323	
39	Wk 35	38	45	17	101	
40	Wk 35	1	1	1	3	
Total		4,416	33,096	58,577	39,904	131,577

Table 3. Sockeye harvest by week and section, 2015.

STATISTICAL WEEK	Section 15A	Section 15C	Grand Total
26	1,102	2,009	3,111
27	395	1,742	2,137
28	999	8,467	9,466
29	594	7,349	7,943
30	4,275	6,567	10,842
31	7,374	8,451	15,825
32	17,809	7,853	25,662
33	19,098	4,071	23,169
34	13,381	1,351	14,732
35	14,191	1,627	15,818
36	1,325	117	1,442
37	873	130	1,003
38	311	12	323
39	96	5	101
40	3	0	3
Grand Total	81,826	49,751	131,577

Figure 6. 2015 District 15 Weekly Chum Harvest and CPUE



Summer Chum Harvest = 799,627 (82% the 10-year average, 62% of the 2014 Harvest)

Fall Chum Harvest = 37,204 (54% of the 10-year average)

Total Chum Harvest = 836,831 (80% of the 10-year average)

Figure 7. 2015 District 15 Weekly Coho Harvest and CPUE

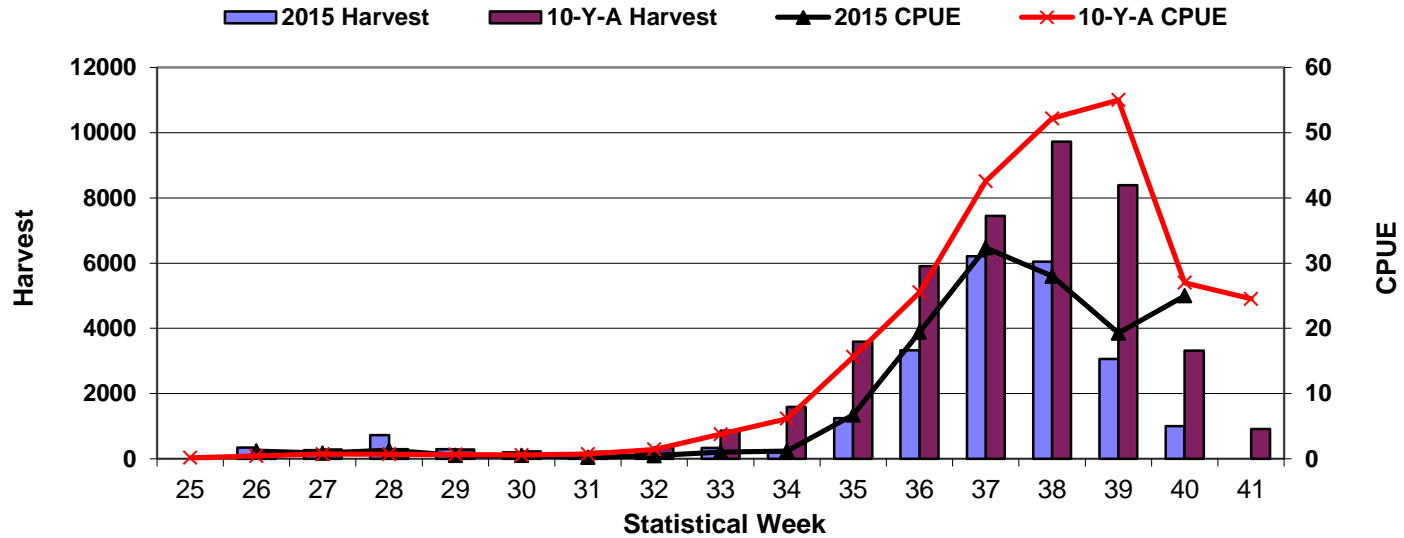


Figure 8. 2015 District 15 Weekly Pink Harvest and CPUE

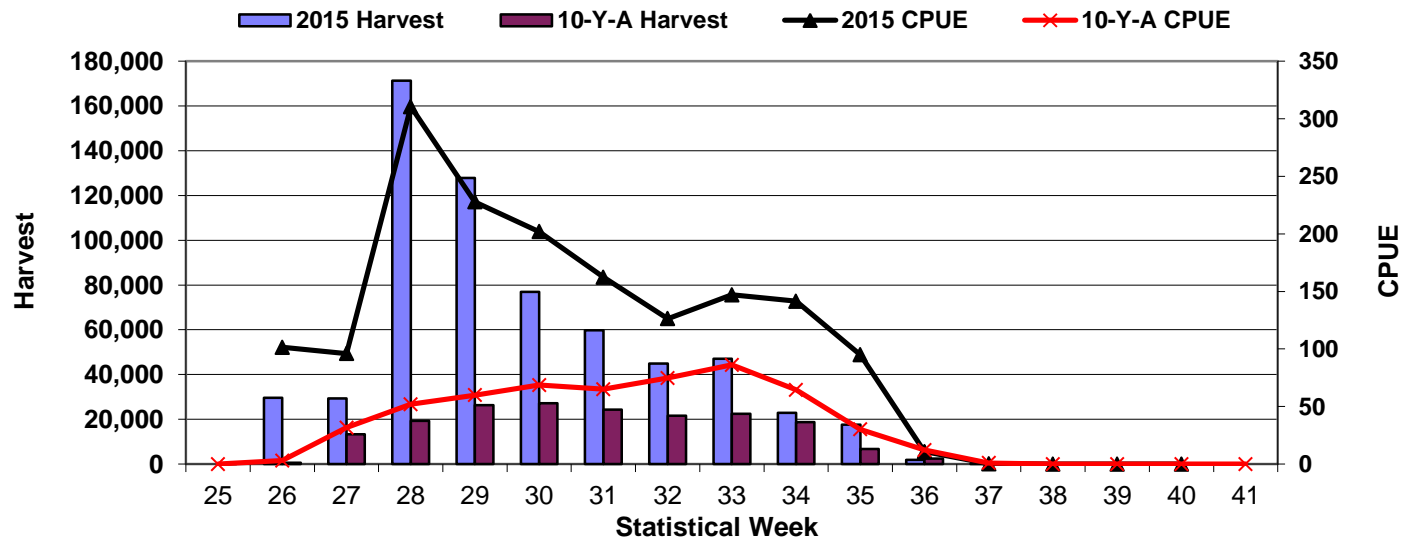


Figure 9. 2015 Chilkoot Lake Sockeye Weir Counts

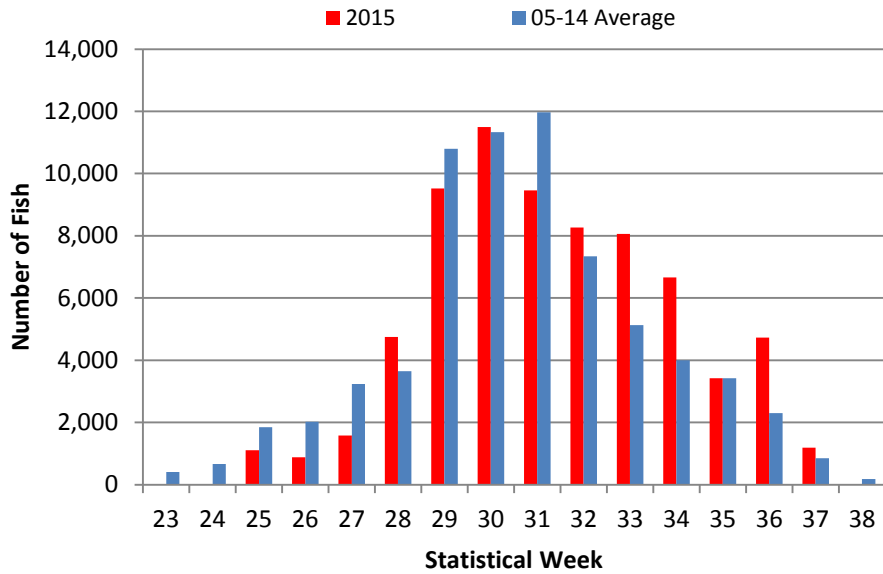


Figure 10. 2015 Cumulative Chilkoot Lake Sockeye Weir Counts

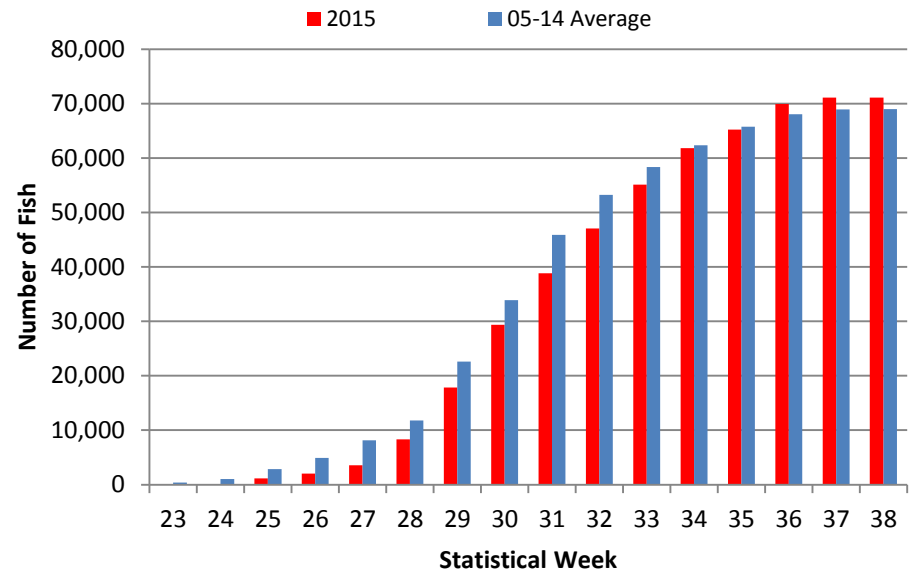


Figure 11. 2015 Chilkoot Weir Counts Compared to Escapement Goals

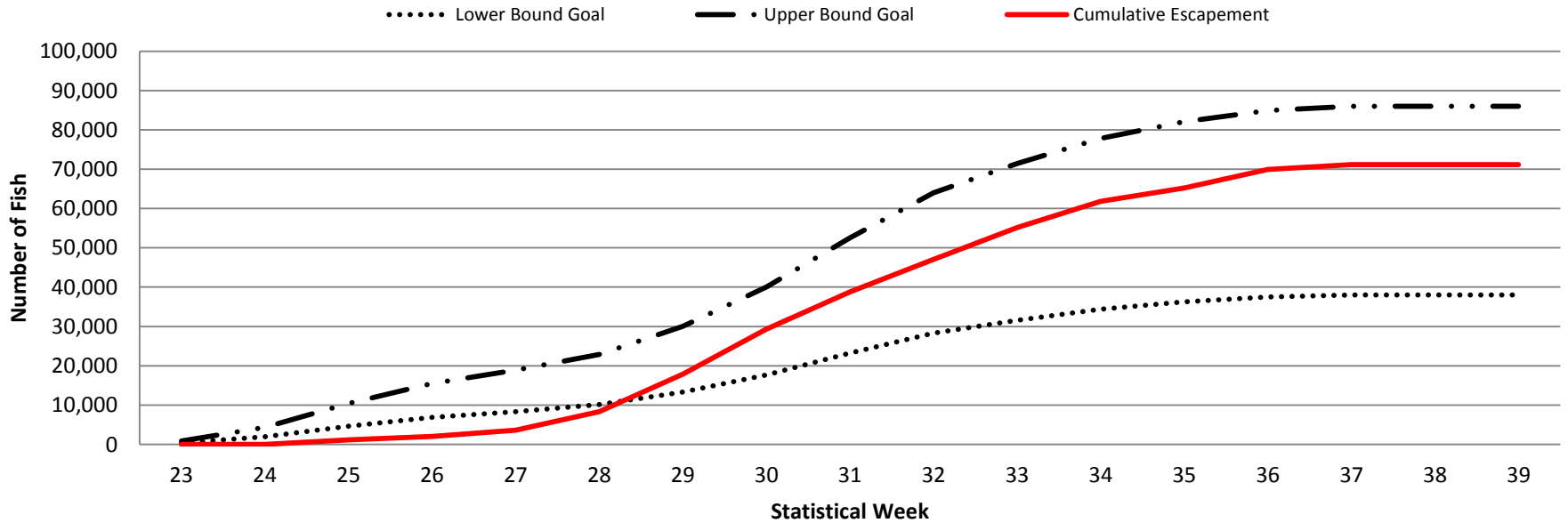


Figure 12. 2015 Chilkat Lake DIDSON Counts

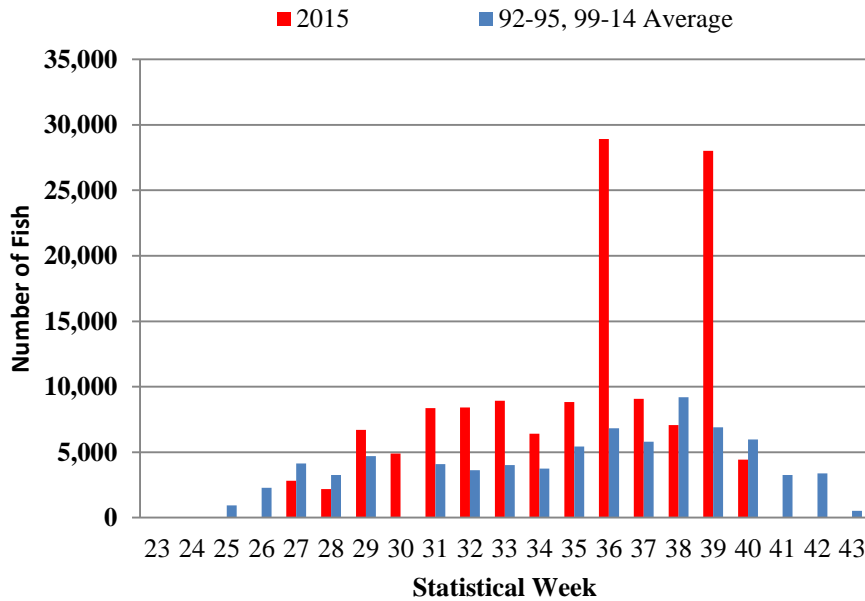


Figure 13. 2015 Chilkat Lake DIDSON Cum Counts

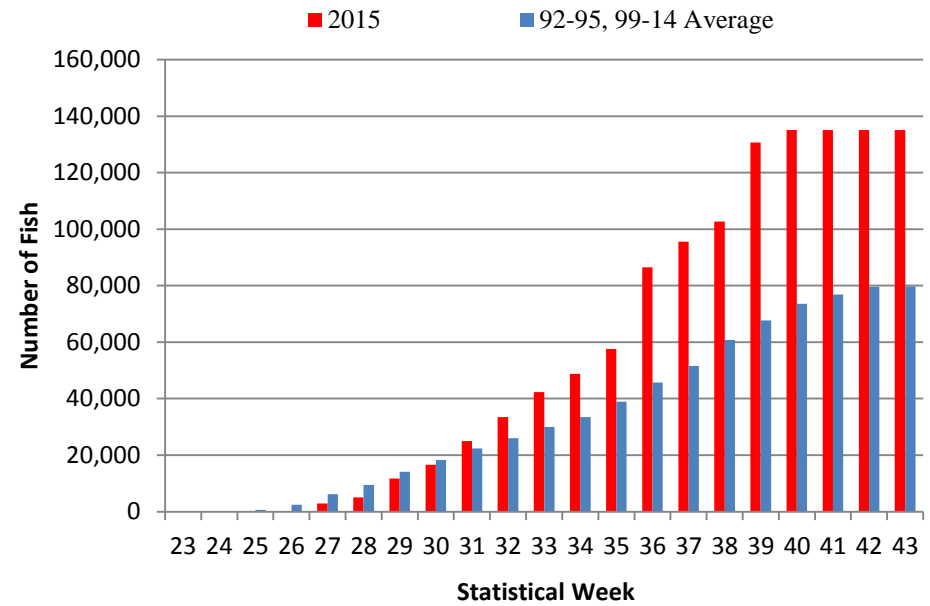


Figure 14. 2015 Chilkat Weir DIDSON Counts Compared to Escapement Goals

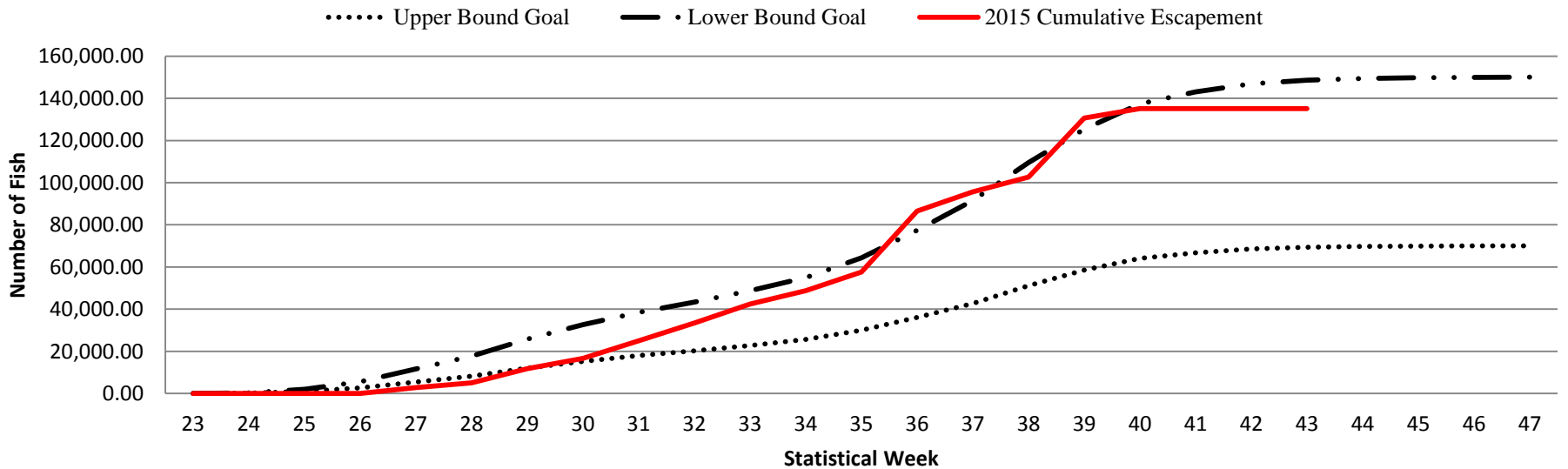


Figure 15. Chilkat River Mainstem Sockeye Escapement, 1999-2015

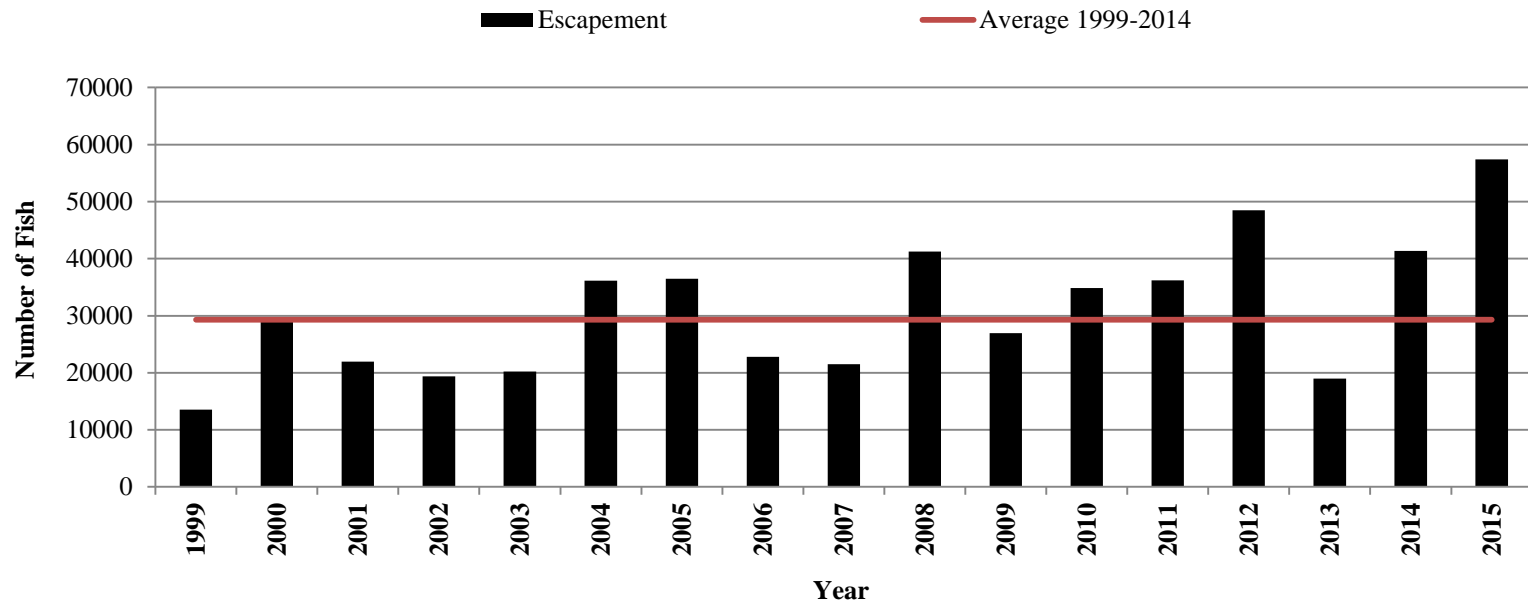


Figure 16. Chilkat River Chinook Escapement, 1991-2015

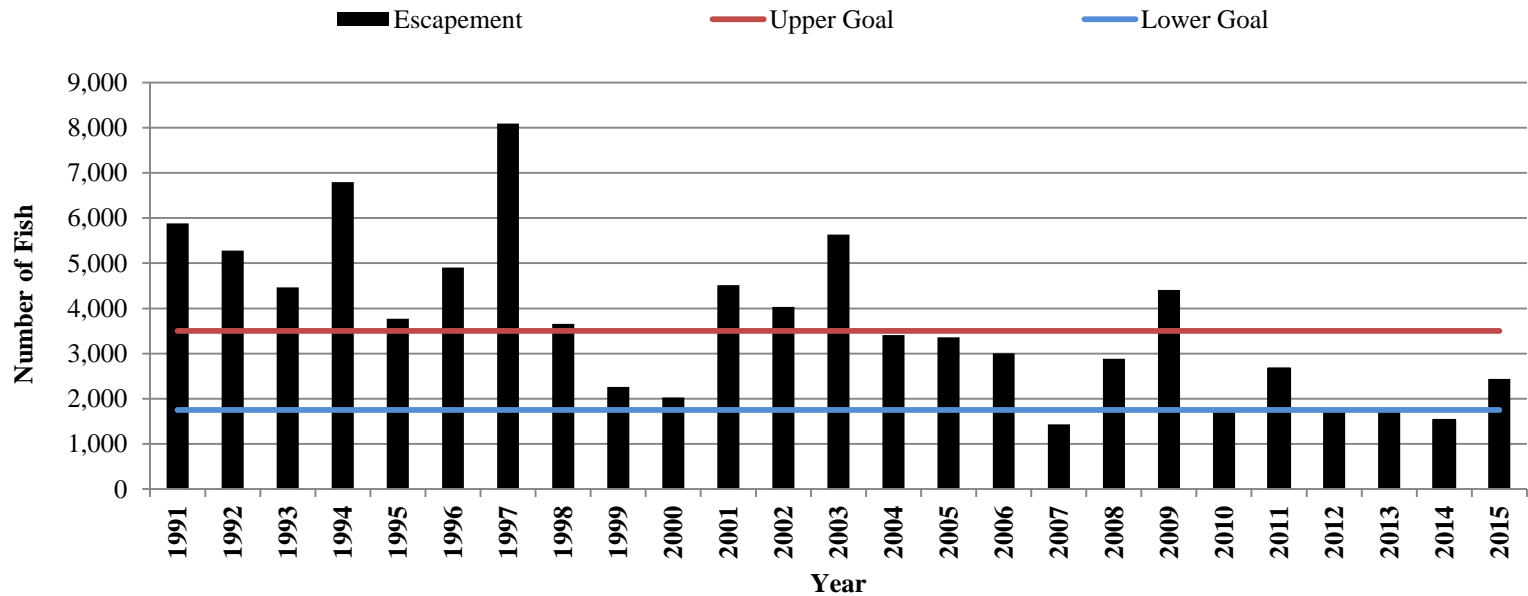


Figure 17. Chilkat River Coho Salmon Escapement, 1998-2015

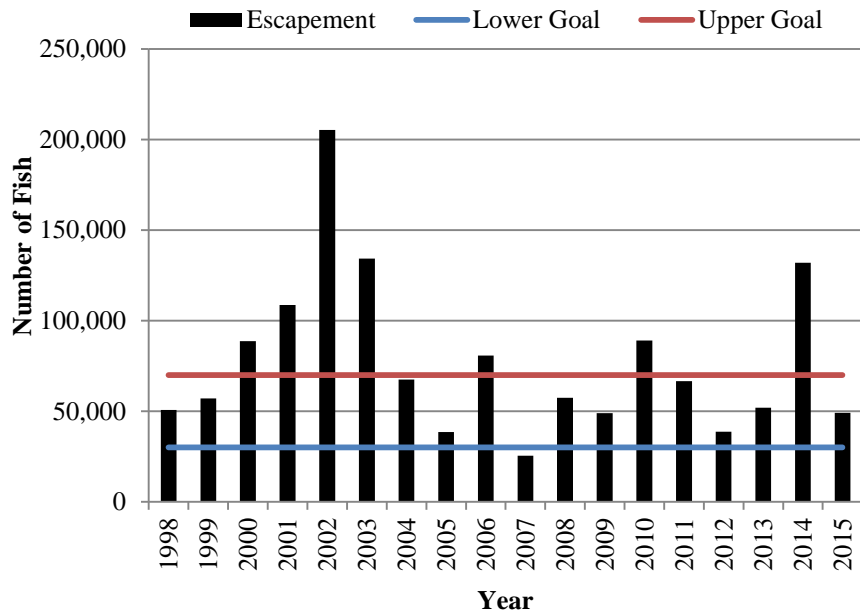


Figure 18. Berners River Coho Salmon Escapement, 1998-2015

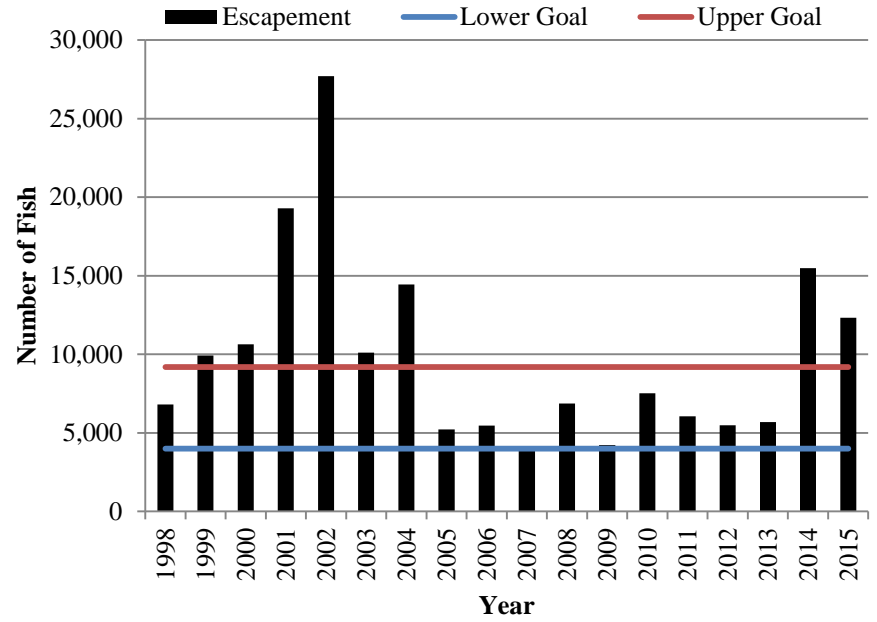
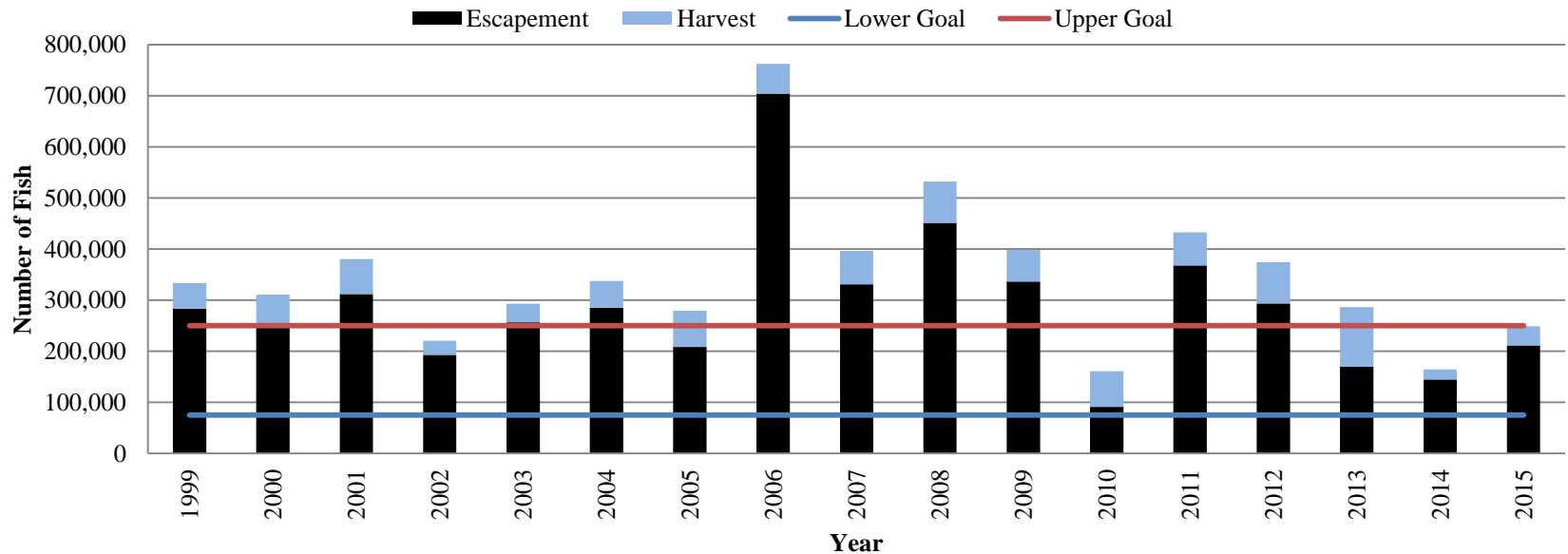


Figure 19. Chilkat River Drainage Fall Chum Escapement and Harvest, 1999-2015





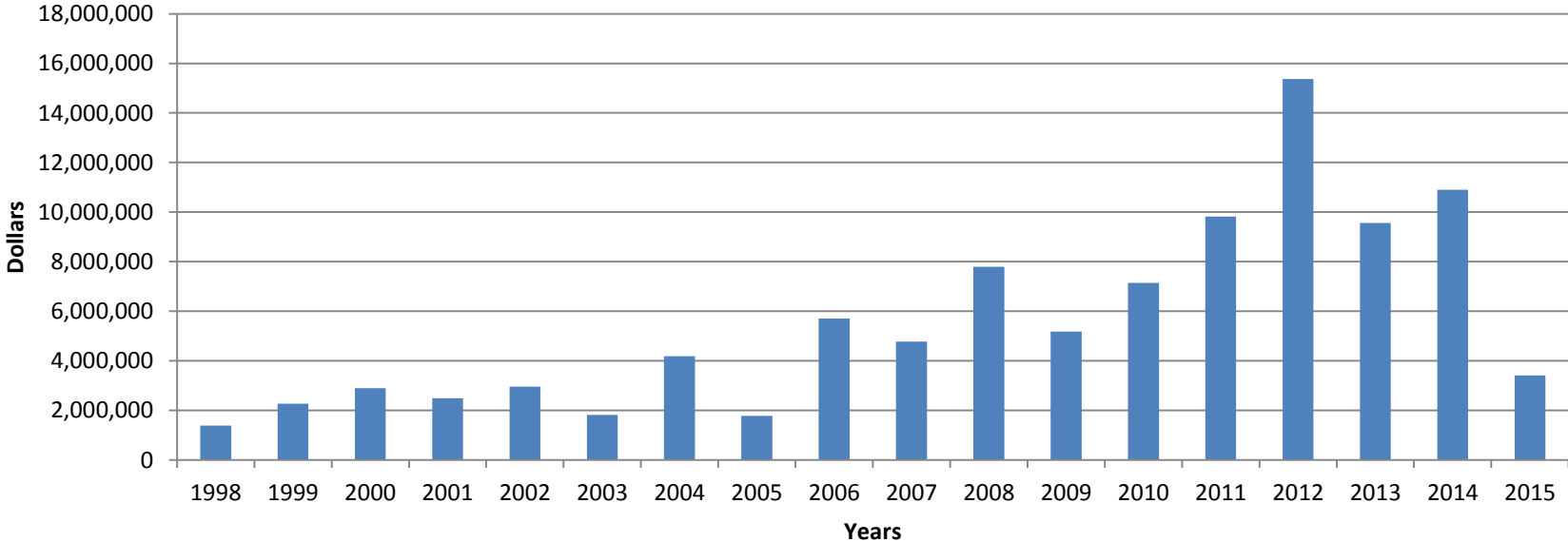
Pink and Chum Salmon Escapements in District 15.

- Pink salmon escapements were above average throughout the district.
- Summer chum salmon escapements were generally good on the eastern shore and average on the western shore in 2015.

Chilkat and Klehini River Chum Salmon

- Above average return to the Klehini River and average for the Chilkat River spawning areas.

Figure 20. Lynn Canal Drift Gillnet Salmon Fishery Value, 1998-2015



2016 Projections

Chilkat Lake Sockeye Salmon – Average to Below Average Projection for 2016.

- Zooplankton levels were above average in Chilkat Lake for rearing smolt in 2012 and well above average in 2013.
- Parental year escapements were below the escapement goal ranges in 2010 and 2011 (brood years for 2016 return).
- The proportion of age-1.2 in the 2015 escapement was about average, and the age-2.2 fish in the 2015 Chilkat Lake escapement was well below average. This could indicate an average to below return of age-2.3 fish in 2016.

Figure 21. Chilkat Late Escapement, 1999-2015

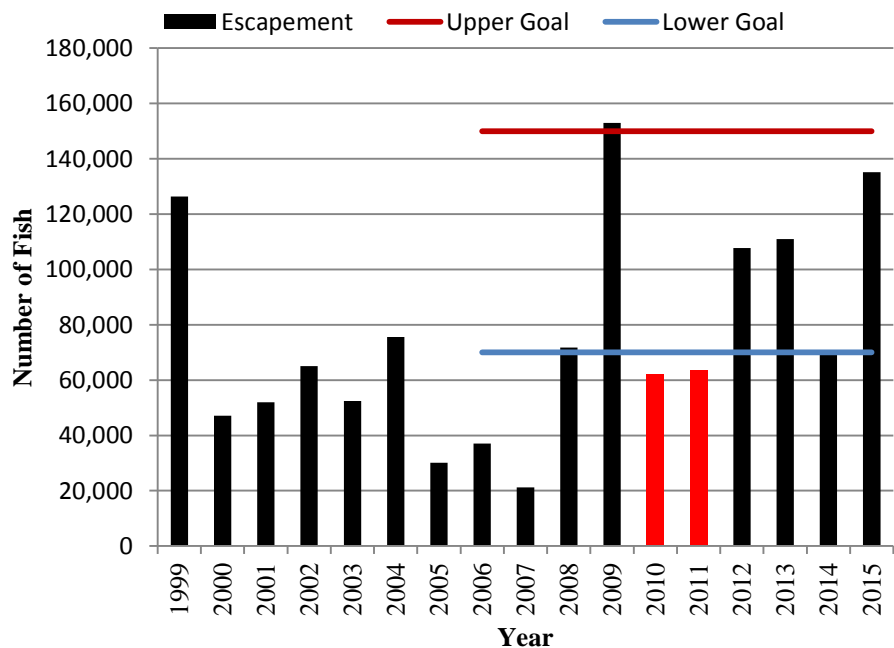
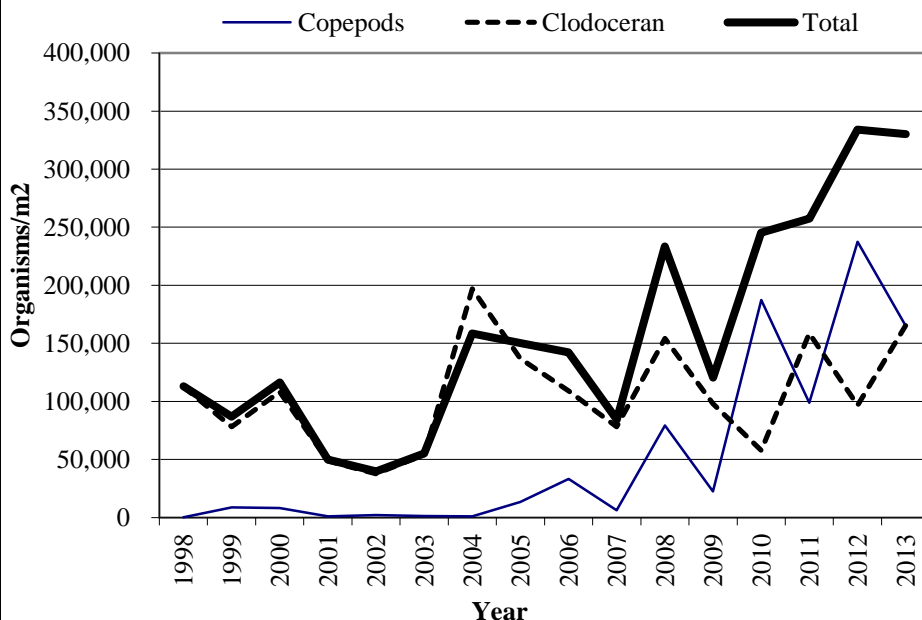


Figure 22. Chilkat Lake Total Zooplankton Density, 1998-2013



Chilkoot Lake Sockeye- Average Projection for 2016.

- 2011 weir count of 65,915 sockeye was within the goal range of 38,000-86,000 fish.
- Lake productivity in 2011 (zooplankton density and rearing smolt density) was just above average.
- The proportion of age-1.2 sockeye in 2014 escapement was about twice average proportion. This may indicate an average to above average number of age-1.3 fish in the 2016 return.

Figure 23. Chilkoot Lake Escapement, 1998-2015

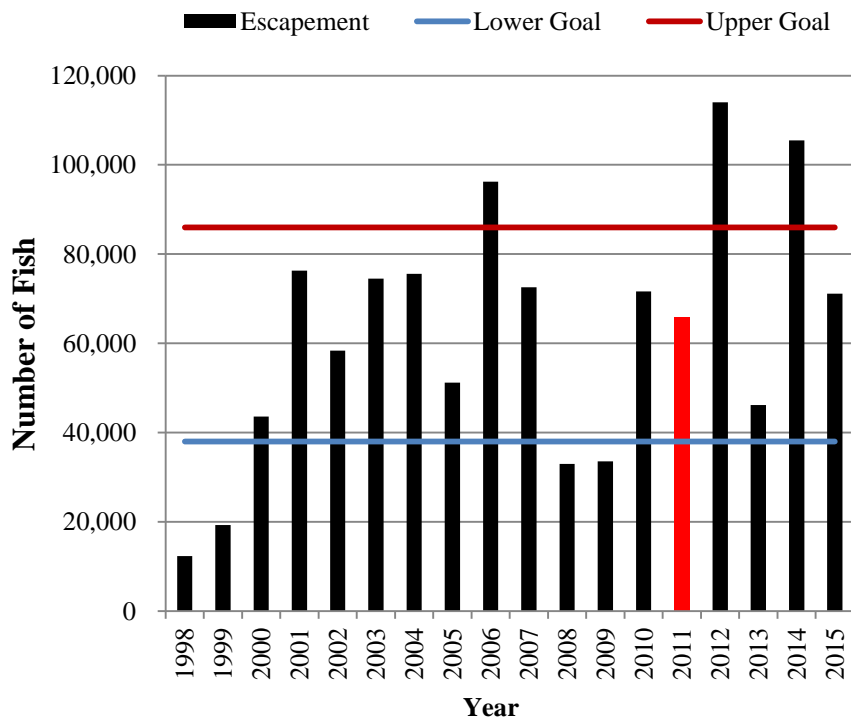
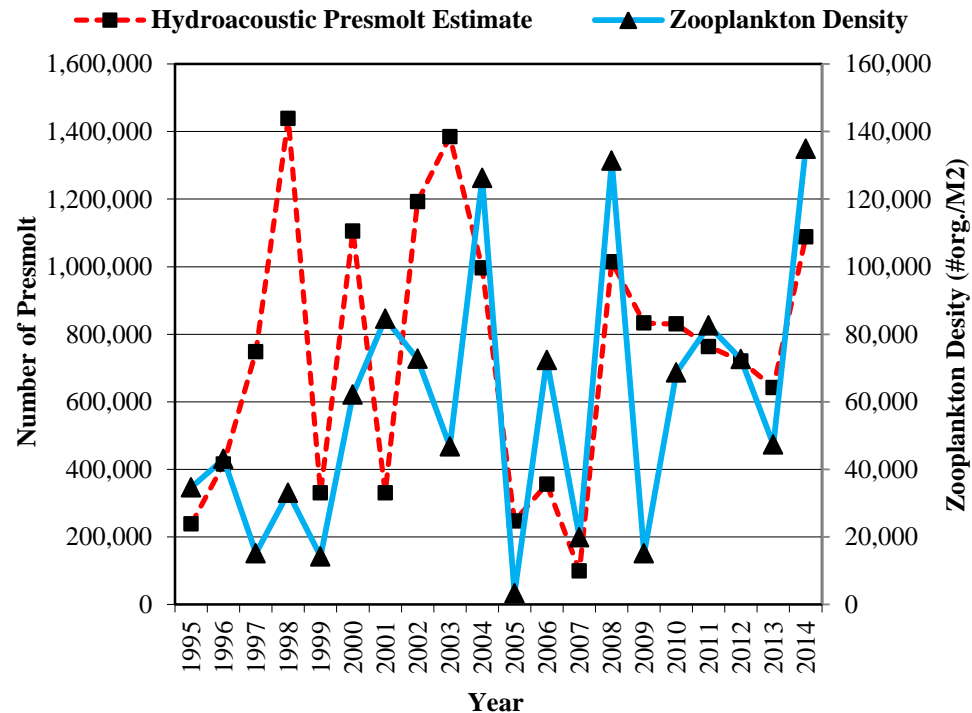


Figure 24. Chilkoot Lake Hydroacoustic Presmolt Estimate and Zooplankton Density, 1995-2014



Thanks!



Chilkat River fish wheel