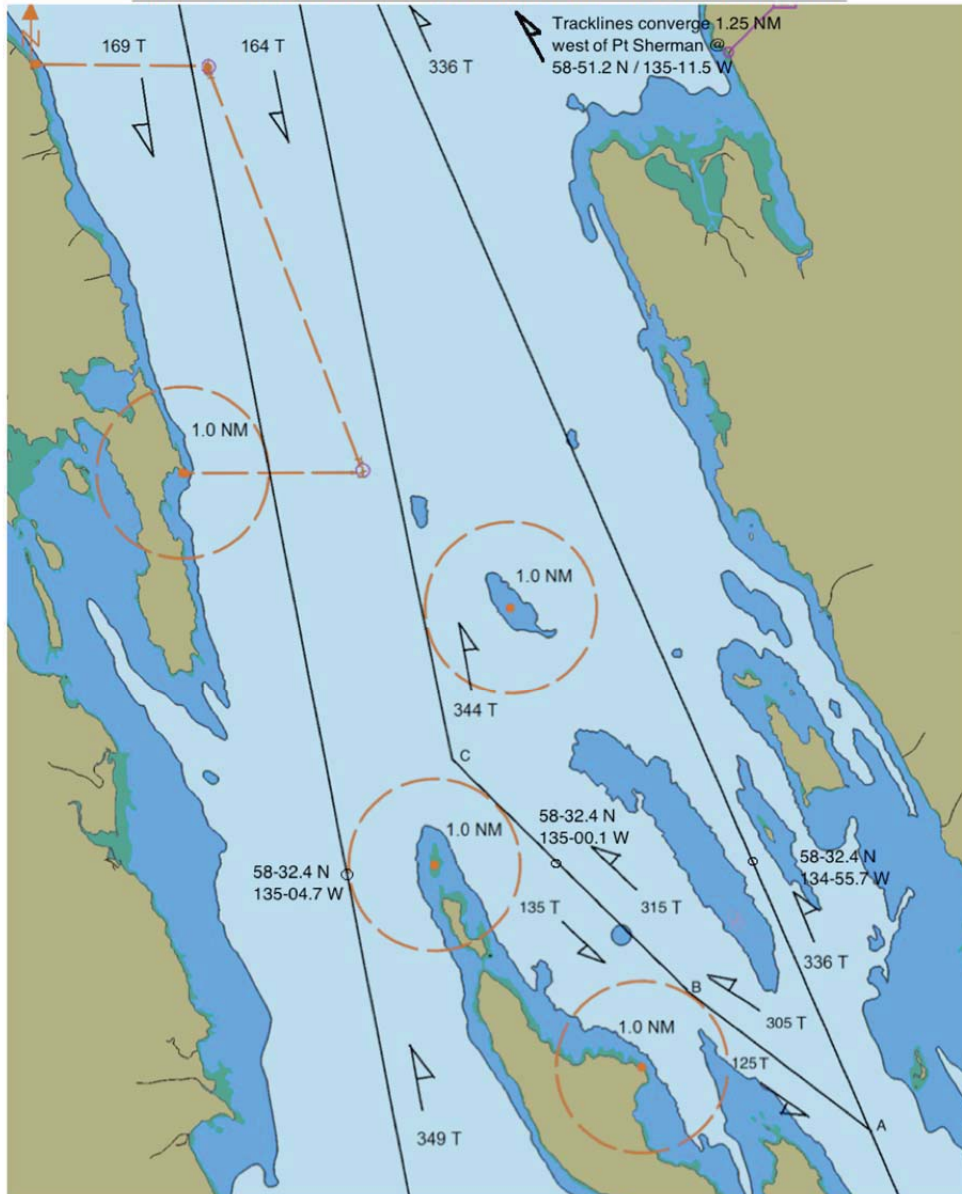


SOUTHEAST ALASKA MARINE SAFETY TASK FORCE MAY 2015
LYNN CANAL DEEP-DRAFT TRAFFIC STANDARD TRACKLINES EAST AND WEST OF LITTLE ISLAND.
NOT FOR NAVIGATION – NOT FOR NAVIGATION – NOT FOR NAVIGATION



A: 58-29.5N / 134-53.3 W

B: 58-30.9N / 134-57.1W

C: 58-33.3N / 135-01.8W

Voluntary vessel traffic procedures for gillnet fishing conditions and deep-draft ships. Traffic lanes, about 0.2 NM wide, are centered on the tracklines as shown.

Deep-Draft Traffic:

Secureite call 30-45 minutes prior to entering area and at regular intervals while transiting the area.
 Travel along tracklines as much as possible.

Gillnet Fishing Vessels;

Mark net end with lights and radar reflectors;
 Monitor VHF CH 13 & 16 for broadcasts;
 Warn other gillnetters if they appear in the traffic lane and deep-draft ships are approaching.
 Do not place sleep sets within or adjacent to tracklines.

Generally in Lynn Canal the following can be expected:

Ships northbound tend to be coming from Juneau or Glacier Bay and are traveling at approximately 10-14 kts.

Ships southbound sailing in the afternoon tend to be sailing for Ketchikan or Victoria and are traveling at approximately 18-22 kts.

Ships southbound sailing late in the evening tend to be sailing for Juneau, Glacier Bay or Tracy Arm and are traveling at approximately 10-14 kts.

Ship schedules may change without notice; use ETA's at your own risk. Some schedule changes may be due to medical emergencies, rescue operations, or inclement weather. There will be no prior notice; the prudent mariner will use the ETA's with caution.

2017 Cruise Ships passing Vicinity of Little Island/PoundStone Rock

For General Information use only: Use at your own risk

JUNE 2017 - LITTLE ISLAND

Sunday	Monday	Tuesday	Wednesday	Thursday	Friday	Saturday
				1	2	3
4	5	6	7	8	9	10
11	12	13	14	15	16	17
18	19	20	21	22	23	24
NB 1	NB 3	NB 4	NB 5	NB 4	NB 2	NB 3
SB 2 ETA 0000-0300	SB 1 ETA 0000-0300	SB 2 ETA 0000-0300	SB 3 ETA 0000-0300	SB 3 ETA 0000-0300	SB 3 ETA 0000-0300	SB 2 ETA 0000-0300
SB 1@2100	SB 1@1800	SB 1@2100	SB 1 @2000 SB 1 @2100	SB 1@2000		SB 1@1900
25	26	27	28	29	30	
NB 3	NB 3	NB 4	NB 5	NB 4	NB 2	
SB 2 ETA 0000-0300	SB 2 ETA 0000-0300	SB 2 ETA 0000-0300	SB 3 ETA 0000-0300	SB 2 ETA 0000-0300	SB 2 ETA 0000-0300	
SB 1800	SB 1@2100	SB 1@2100	SB 1@1900 SB 1@2030	SB 1@2000 SB 1@2100	SB 1@2000	
		Notes:				
		24 HOUR CLOCK USED: 0000 IS MIDNIGHT				
		NUMBER OF SHIPS EXPECTED BETWEEN 0000-0300				
		NB: NORTHBOUND - SB: SOUTHBOUND				
		For general informational use only. Use at your own Risk.				
		ALL TIMES ARE APPROXIMATE AND SUBJECT TO CHANGE				
		See Lynn Canal Deep draft standard tracklines for reference - page 1				
		© 2012 Vertex42 LLC				
		Calendar Template by Vertex42.com				

2017 Cruise Ships passing Vicinity of Little Island/PoundStone Rock

For General Information use only: Use at your own risk

JULY 2017 - LITTLE ISLAND

Sunday	Monday	Tuesday	Wednesday	Thursday	Friday	Saturday
						1 NB 3 SB 1 ETA 0000-0300
2 NB 1 SB 3 ETA 0000-0300 SB 1@2100	3 NB 4 ETA 0000-0300 SB 1 @1800 SB 1 @2100	4 NB 4 SB 2 ETA 0000-0300 SB 1 @2100	5 NB 5 SB 3 ETA 0000-0300 SB 1@1930 SB 1@2030	6 NB 4 SB 3 ETA 0000-0300 SB 1@2000	7 NB 2 SB 3 ETA 0000-0300	8 NB 1 SB 2 ETA 0000-0300
9 NB 2 SB 1 ETA 0000-0300 SB 1@1900	10 NB 3 SB 1 ETA 0000-0300 SB 1@2100	11 NB 5 SB 2 ETA 0000-0300 SB 1@2100	12 NB 6 SB 4 ETA 0000-0300 SB 1@1900 SB 1@2030 SB 1@2200	13 NB 4 SB 3 ETA 0000-0300 SB 1@2000	14 NB 3 SB 2 ETA 0000-0300 SB 1@2000 SB 1@2100	15 NB 2 SB 1 ETA 0000-0300
16 NB 1 SB 2 ETA 0000-0300	17 NB 3 ETA 0000-0300 SB 1@1800	18 NB 4 SB 2 ETA 0000-0300 SB 1@2100	19 NB 5 SB 3 ETA 0000-0300 SB 1@1900 SB 1@2030	20 NB 4 SB 3 ETA 0000-0300 SB 1@2000	21 NB 2 SB 2 ETA 0000-0300	22 NB 1 SB 3 ETA 0000-0300
23 NB 3 SB 2 ETA 0000-0300 SB 1@1900	24 NB 4 SB 1 ETA 0000-0300 SB 1@2100 SB 1@2200	25 NB 4 SB 2 ETA 0000-0300 SB 1@2100	26 NB 5 SB 3 ETA 0000-0300 SB 1@ 1900 SB 1@2030	27 NB 2 SB 3 ETA 0000-0300 SB 1@2000	28 NB 3 SB 1 ETA 0000-0300 SB 1@2000 SB 1@2100	29 NB 2 SB 3 ETA 0000-0300
30 NB 1 SB 3 ETA 0000-0300	31 NB 3 SB 1 ETA 0000-0300 SB 1@2000	Notes: 24 HOUR CLOCK USED: 0000 IS MIDNIGHT NUMBER OF SHIPS EXPECTED BETWEEN 0000-0300 NB: NORTHBOUND - SB: SOUTHBOUND For general informational use only. Use at your own Risk. ALL TIMES ARE APPROXIMATE AND SUBJECT TO CHANGE See Lynn Canal Deep draft standard tracklines for reference - page 1				

2017 Cruise Ships passing Vicinity of Little Island/PoundStone Rock

For General Information use only: Use at your own risk

AUGUST 2017 - LITTLE ISLAND

Sunday	Monday	Tuesday	Wednesday	Thursday	Friday	Saturday
		1 NB 1	2 NB 5	3 NB 4	4 NB 2	5 NB 1
		SB 2 ETA 0000-0300	SB 3 ETA 0000-0300	SB 3 ETA 0000-0300	SB 1 ETA 0000-0300	SB 2 ETA 0000-0300
		SB 1@2100	SB 1@1930 SB 1@2030	SB 1@2000 SB 1@2030 SB 1@2100		
6 NB 3	7 NB 3	8 NB 4	9 NB 5	10 NB 3	11 NB 3	12 NB 3
SB 1 ETA 0000-0300	SB 1 ETA 0000-0300	SB 2 ETA 0000-0300	SB 3 ETA 0000-0300	SB 3 ETA 0000-0300	SB 2 ETA 0000-0300	SB 2 ETA 0000-0300
SB 1@1900 SB 1@2100	SB 1@2100	SB 1@2100	SB 1@1900 SB 1@2030	SB 1@2000	SB 1@2000	
13 NB 1	14 NB 3	15 NB 4	16 NB 5	17 NB 3	18 NB 2	19 NB 1
SB 3 ETA 0000-0300	ETA 0000-0300	SB 2 ETA 0000-0300	SB 3 ETA 0000-0300	SB 3 ETA 0000-0300	SB 2 ETA 0000-0300	SB 2 ETA 0000-0300
1 SB @2100	SB 1@1900	SB 1@2100	SB 1@1930 SB 1@2030	SB 1@2000		
20 NB 2	21 NB 4	22 NB 4	23 NB 5	24 NB 3	25 NB 2	26 NB 2
SB 1 ETA 0000-0300	SB 1 ETA 0000-0300	SB 3 ETA 0000-0300	SB 3 ETA 0000-0300	SB 3 ETA 0000-0300	SB 2 ETA 0000-0300	SB 1 ETA 0000-0300
SB 1@1900	SB 1@2100	SB 1@2100	SB 1@1900 SB 1@2030	SB 1@2000	SB 1@2000	
27 NB 1	28 NB 3	29 NB 4	30 NB 5	31 NB 5		
SB 2 ETA 0000-0300	SB 2 ETA 0000-0300	SB 2 ETA 0000-0300	SB 3 ETA 0000-0300	SB 3 ETA 0000-0300		
SB 1@1930	SB 1@1900	SB 1@2100	SB 1@1900 SB 1@2030	1 SB @2000 1 SB @2100		
Notes:						
24 HOUR CLOCK USED: 0000 IS MIDNIGHT						
NUMBER OF SHIPS EXPECTED BETWEEN 0000-0300						
NB: NORTHBOUND - SB: SOUTHBOUND						
For general informational use only. Use at your own Risk.						
ALL TIMES ARE APPROXIMATE AND SUBJECT TO CHANGE						
See Lynn Canal Deep draft standard tracklines for reference - page 1						
© 2012 Vertex42 LLC				Calendar Template by Vertex42.com		