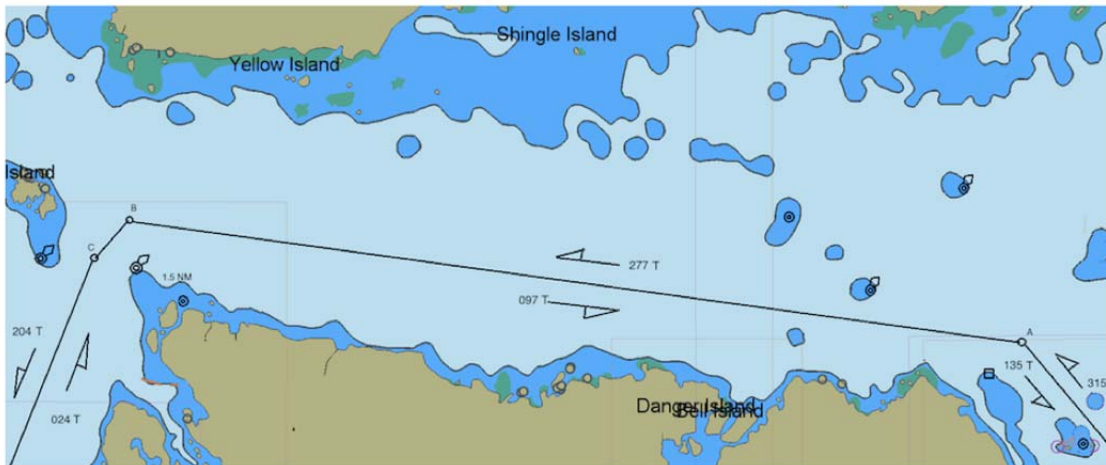


SOUTHEAST ALASKA MARINE SAFETY TASK FORCE MAY 2015
SUMNER STRAIT DEEP-DRAFT TRAFFIC STANDARD TRACKLINES
NOT FOR NAVIGATION – NOT FOR NAVIGATION – NOT FOR NAVIGATION



A: 56-21.0N / 133-09.5 W

B: 56-23.0N / 133-38.7W

C: 56-22.5N / 133-39.9 W

Voluntary vessel traffic procedures for gillnet fishing conditions and deep-draft ships. Traffic lanes, about 0.2 NM wide, are centered on the tracklines as shown.

REFERENCE COAST PILOT 8

Deep-Draft Traffic:

Secure call 30-45 minutes prior to entering area and at regular intervals while transiting the area. Travel along tracklines as much as possible.

Gillnet Fishing Vessels;

Mark net end with lights and radar reflectors;
Monitor VHF CH 13 & 16 for broadcasts;
Warn other gillnetters if they appear in the traffic lane and deep-draft ships are approaching.
Do not place sleep sets within or adjacent to tracklines.
Provide for two-way traffic of large vessels along the designated tracklines.

Point Baker Cruise Ship ETA's 2017

For General informational use only. Use at your own risk.

JUNE 2017 - PT BAKER

Sunday	Monday	Tuesday	Wednesday	Thursday	Friday	Saturday
				1	2	3
4	5	6	7	8	9	10
11	12	13	14	15	16	17
18	19	20	21	22	23	24
1 EB 0100	2 EB 0300-0430	1 EB 0600	1 EB 0300	3 EB 0100-0200 2 EB 0300-0400	1 EB 0000 1 EB 0100 1 EB 0500 1 EB 1000	1 EB 0500
2 WB 2100-2300	2 WB 1930-2130	3 WB 2000-2200	3 WB 2200-2400		1 WB 2000	1 WB 2000
25	26	27	28	29	30	
1 EB 0100	2 EB 0000-0130	1 EB 0400	1 EB 0200 1 EB 0300	1 EB 0100 1 EB 0200 2 EB 0300-400	1 EB 0000 1 EB 0100 1 EB 0500 1 EB 0800 1 WB 2200	
1 WB 2100 1 WB 2200	2 WB 1930-2130	2 NB 2000-2200				
		Notes:				
		24 HR CLOCK IS USED 0000 IS MIDNIGHT				
		NUMBER OF SHIPS EXPECTED				
		WB- WEST BOUND SHIPS APPROACHING POINT BAKER				
		EB- EAST BOUND SHIPS APPROACHING POINT BAKER FROM THE SOUTH				
		LISTEN FOR SECURITE CALLS VHF CH 16 & 13				
		ALL TIMES ARE APPROXIMATE AND SUBJECT TO CHANGE				
		© 2012 Vertex42 LLC				
		Calendar Template by Vertex42.com				

Point Baker Cruise Ship ETA's 2017

For General informational use only. Use at your own risk.

JULY 2017 - PT BAKER

Sunday	Monday	Tuesday	Wednesday	Thursday	Friday	Saturday
						1 1 EB 0500 1 EB 0600 1 EB 0700
2 1 EB 0100 1 WB 1900 1 WB 2200	3 1 WB 0200 3 EB 0200-0400 2 WB 2000-2100	4 1 EB 0600 2 WB 2100	5 1 EB 0300 1 WB 2300 1 WB 0000	6 2 EB 0100 2 EB 0300-0400	7 1 EB 0000 1 EB 0100 1 EB 0500 1 EB 0800 1 WB 2000	8 1 EB 0300 1 EB 0500 1 WB 2000
9 1 EB 0100 2 WB 2100-2200	10 1 WB 0200 1 EB 0100 1 EB 0200 1 EB 0600 2 WB 2000-2100	11 3 WB 2100-2200	12 1 EB 0300 1 WB 2130	13 2 EB 0100 2 EB 0300-0400	14 1 EB 0000 1 EB 0100 1 EB 0500 1 EB 0600 1WB 2200	15 1 EB 0500 1 EB 0900
16 1 EB 0100 2 WB 2200	17 1 WB 0200 1 EB 0200 2 EB 0300-0400 2 WB 2000-2100	18 1 EB 0600 2 WB 2100	19 1 EB 0300 1 WB 2200 1 WB 2300	20 2 EB 0100 2 EB 0300-0400	21 2 EB 0000-0100 1 EB 0500 1 EB 0800 1 WB 2000	22 1 EB 0200 1 EB 0400 1 WB 2000
23 2 EB 0100-0200 1 WB 2100 1 WB 2200	24 1 EB 0400 1 EB 0600 2 WB 2000-2100	25 2 WB 2100	26 1 EB 0300 1 WB 2200	27 2 EB 0100 3 WB 0200-0400	28 2 EB 0000-0100 1 EB 0500 1 EB 0800 1 WB 2200	29 1 EB 0700
30 1 EB 0100 2 WB 2200	31 2 EB 0300-0400 1 WB 0100 1 WB 2000 1 WB 2100 1 WB 2300	Notes: 24 HR CLOCK IS USED 0000 IS MIDNIGHT NUMBER OF SHIPS EXPECTED WB- WEST BOUND SHIPS APPROACHING POINT BAKER EB- EAST BOUND SHIPS APPROACHING POINT BAKER FROM THE SOUTH LISTEN FOR SECURITE CALLS VHF CH 16 & 13 ALL TIMES ARE APPROXIMATE AND SUBJECT TO CHANGE				

Point Baker Cruise Ship ETA's 2017

For General informational use only. Use at your own risk.

AUG 2017 - PT BAKER

Sunday	Monday	Tuesday	Wednesday	Thursday	Friday	Saturday
		1 1 EB 0600	2 1 EB 0300 1 EB 0500	3 2 EB 0100 2 EB 0300-0400	4 2 EB 0000-0100 1 EB 0500 1 EB 0800	5 1 EB 0300
		2 WB 2100	2 WB 2200-2300		1 WB 2000	1 WB 2000
6 1 EB 0100	7 1 EB 0400 1 EB 0600	8 1 EB 0100	9 1 EB 0300	10 1 WB 0200 2 EB 0100 2 EB 0300-040	11 3 EB 0000-0200 1 EB 0500 1 EB 0800	12 1 EB 0500 1 EB 0900
2 WB 2100-2200	2 WB 2000-2100	2 WB 2100	1 WB 2100	1 WB 2400	1 WB 2200	
13 1 EB 0100	14 2 EB 0300-0400	15 1 EB 0600	16 1 EB 0300	17 1 WB 0200 1 EB 0100 2 EB 0300-0400	18 2 EB 0000-0100 1 EB 0500 1 EB 0800	19 1 EB 0500
2 WB 2200	2 WB 2000-2100	2 WB 2100	2 WB 2200-2300		1 WB 2000	3 WB 2000-2100
20 1 EB 0100	21 1 EB 0400 1 EB 0600	22	23 1 EB 0300	24 2 EB 0100 2 EB 0300-0400	25 2 EB 0000-0100 1 EB 0500 1 EB 0800	26 1 EB 0500 1 EB 0900
2 WB 2000-2100	2 WB 2000-2100	2 WB 2100	1 WB 2400		1 WB 2300	
27 1 EB 0100	28 2 EB 0300-0400	29 1 EB 0600	30 1 EB 0300	31 2 EB 0100 2 EB 0300-0400		
2 WB 2200	2 WB 2000-2100	3 WB 2100	2 WB 2200-2300			
Notes:						
24 HR CLOCK IS USED 0000 IS MIDNIGHT						
NUMBER OF SHIPS EXPECTED						
WB- WEST BOUND SHIPS APPROACHING POINT BAKER						
EB- EAST BOUND SHIPS APPROACHING POINT BAKER FROM THE SOUTH						
LISTEN FOR SECURITE CALLS VHF CH 16 & 13						
ALL TIMES ARE APPROXIMATE AND SUBJECT TO CHANGE						
© 2012 Vertex42 LLC				Calendar Template by Vertex42.com		