

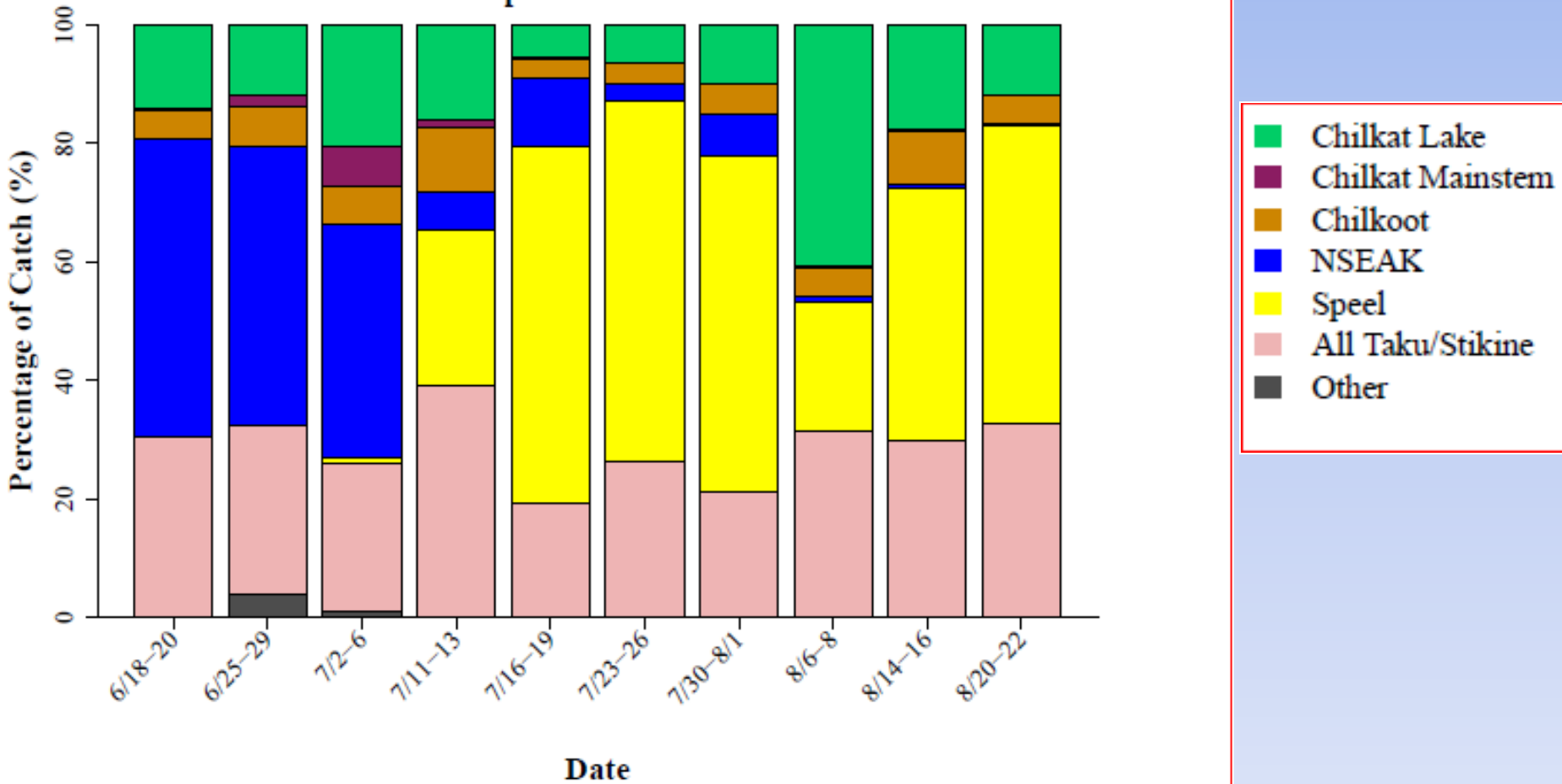
LYNN CANAL SOCKEYE GENETIC STOCK IDENTIFICATION

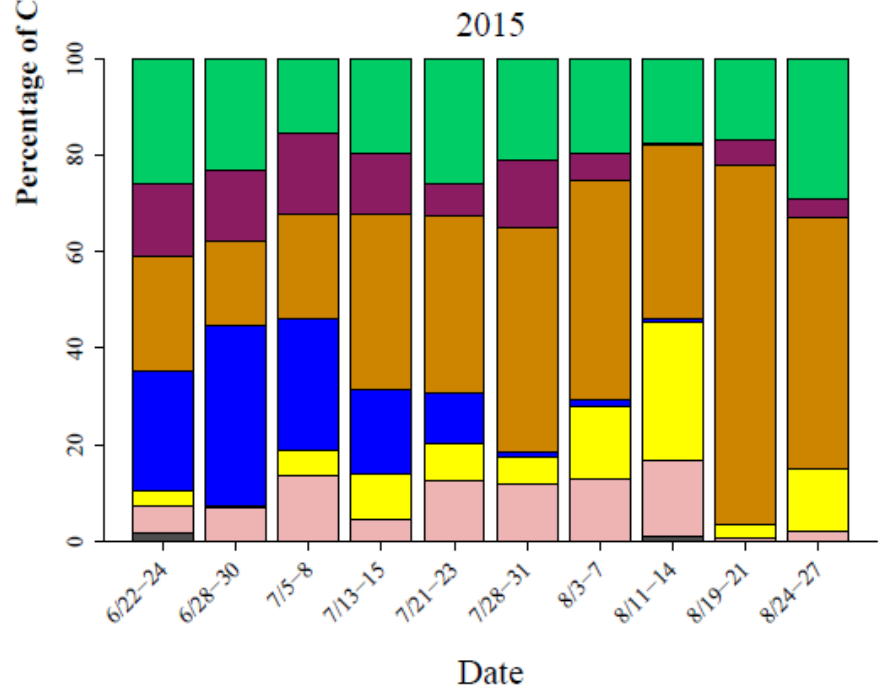
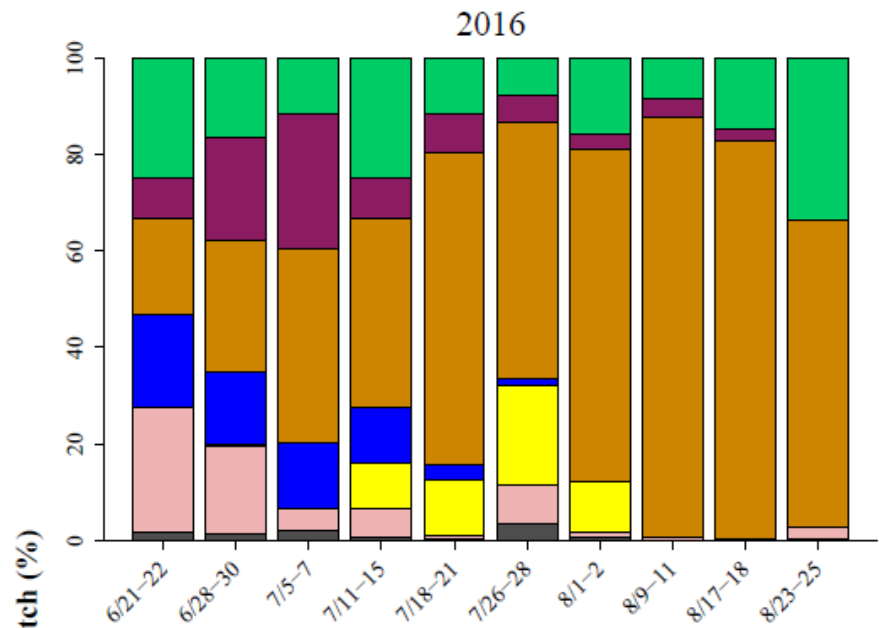
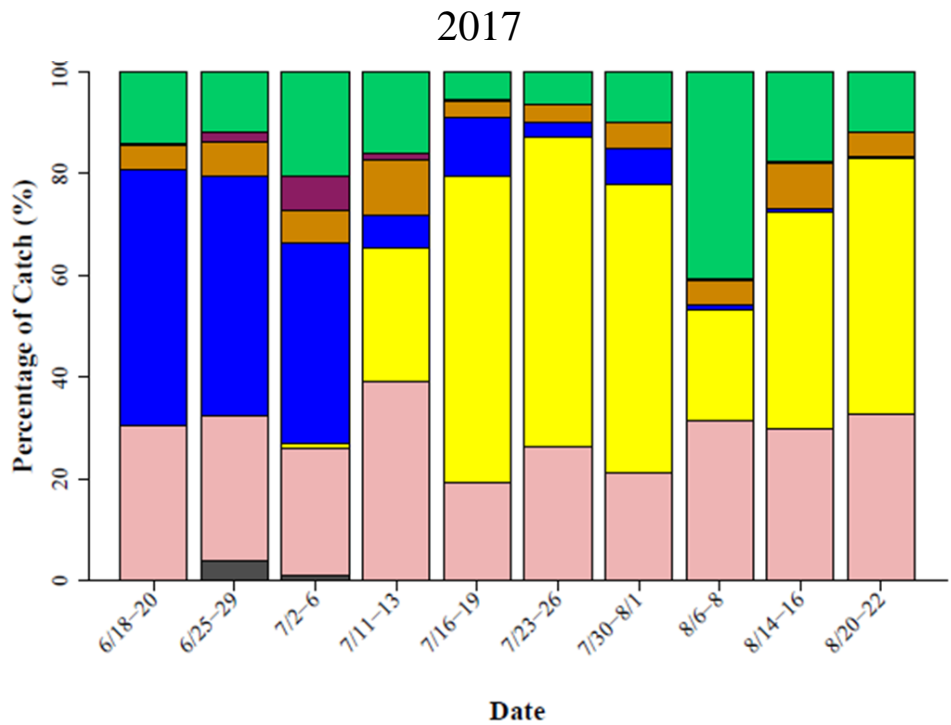
Sockeye salmon matched tissue and scale samples collected from the 2015 - 2017 drift gillnet fisheries in Lynn Canal by statistical week.

Year	Statistical Week	Sample Objective	Sample size	Year	Statistical Week	Sample Objective	Sample size	Year	Statistical Week	Sample Objective	Sample size
2015	26	600	550	2016	26	600	280	2017	25	300	300
	27	600	600		27	600	497		26	300	305
	28	600	600		28	600	600		27	300	322
	29	600	600		29	600	600		28	300	103
	30	600	600		30	600	600		29	300	360
	31	600	600		31	600	600		30	300	305
	32	600	600		32	600	400		31	300	240
	33	600	600		33	600	560		32	300	303
	34	600	600		34	600	600		33	300	300
	35	600	600		35	600	600		34	300	300

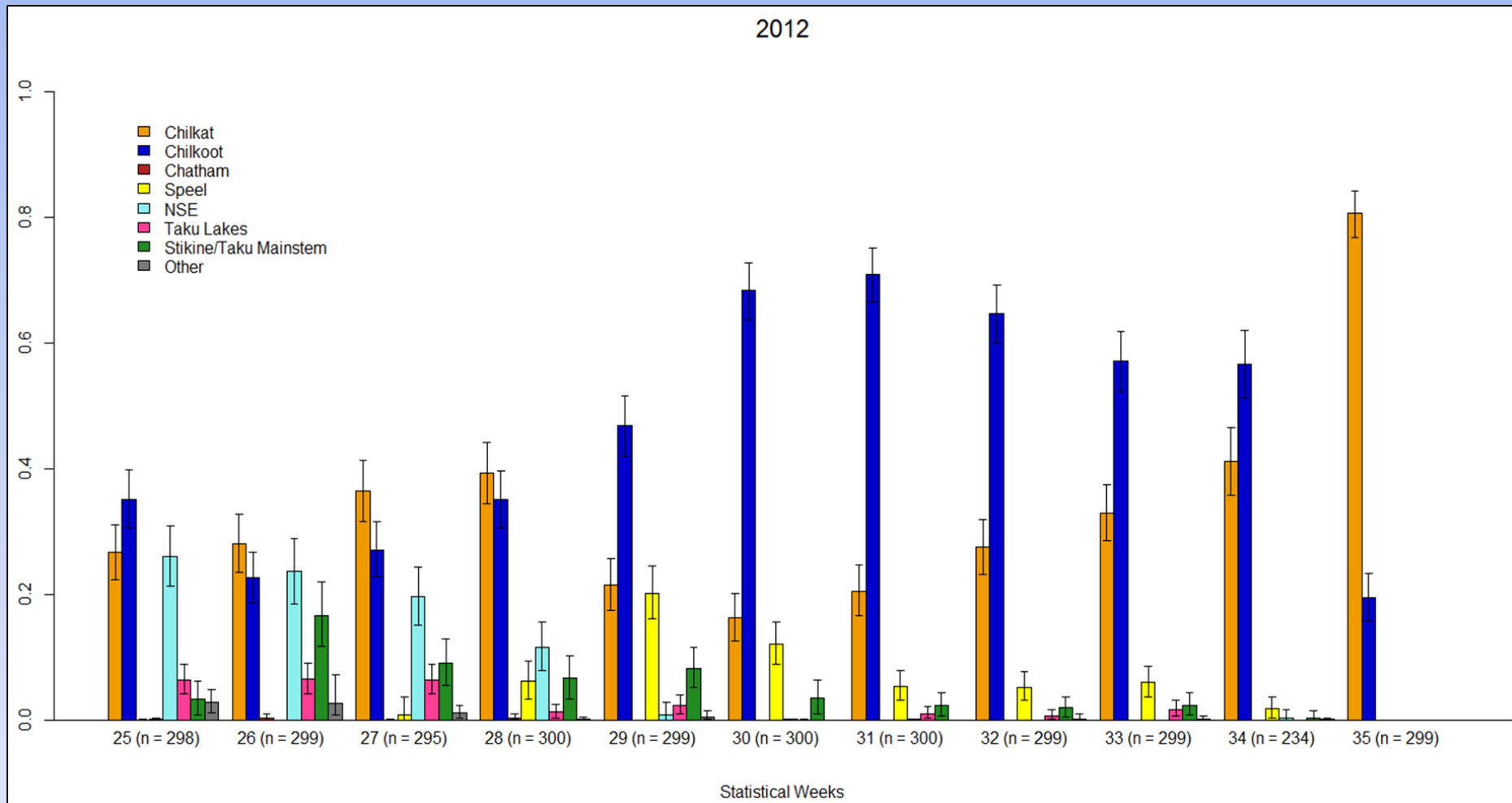
Stock composition estimates for sockeye salmon captured in the District 115 drift gillnet fishery, by statistical week and post-season reporting group, 2017.

Comparison of Weekly Stock Composition Estimates

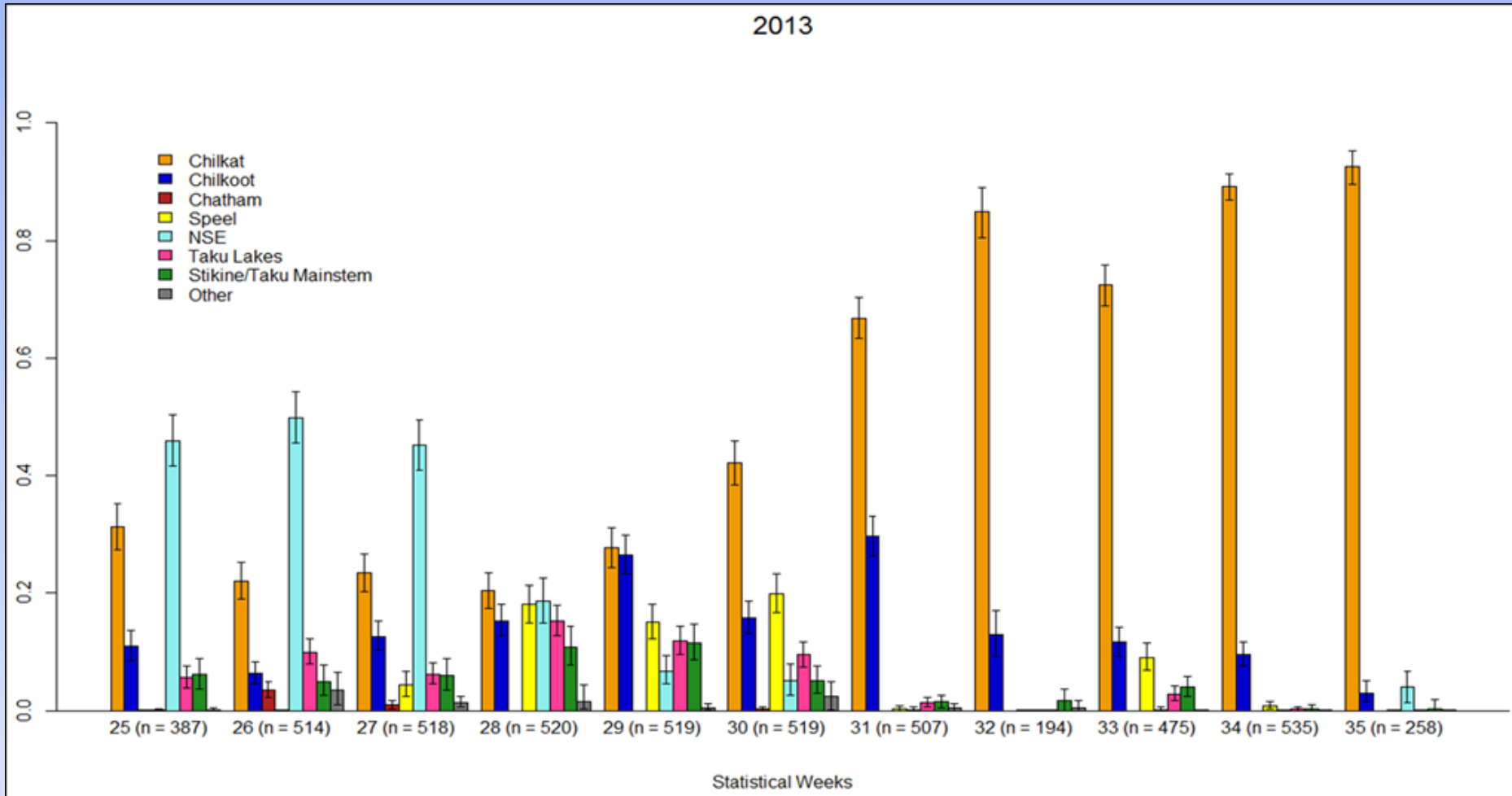




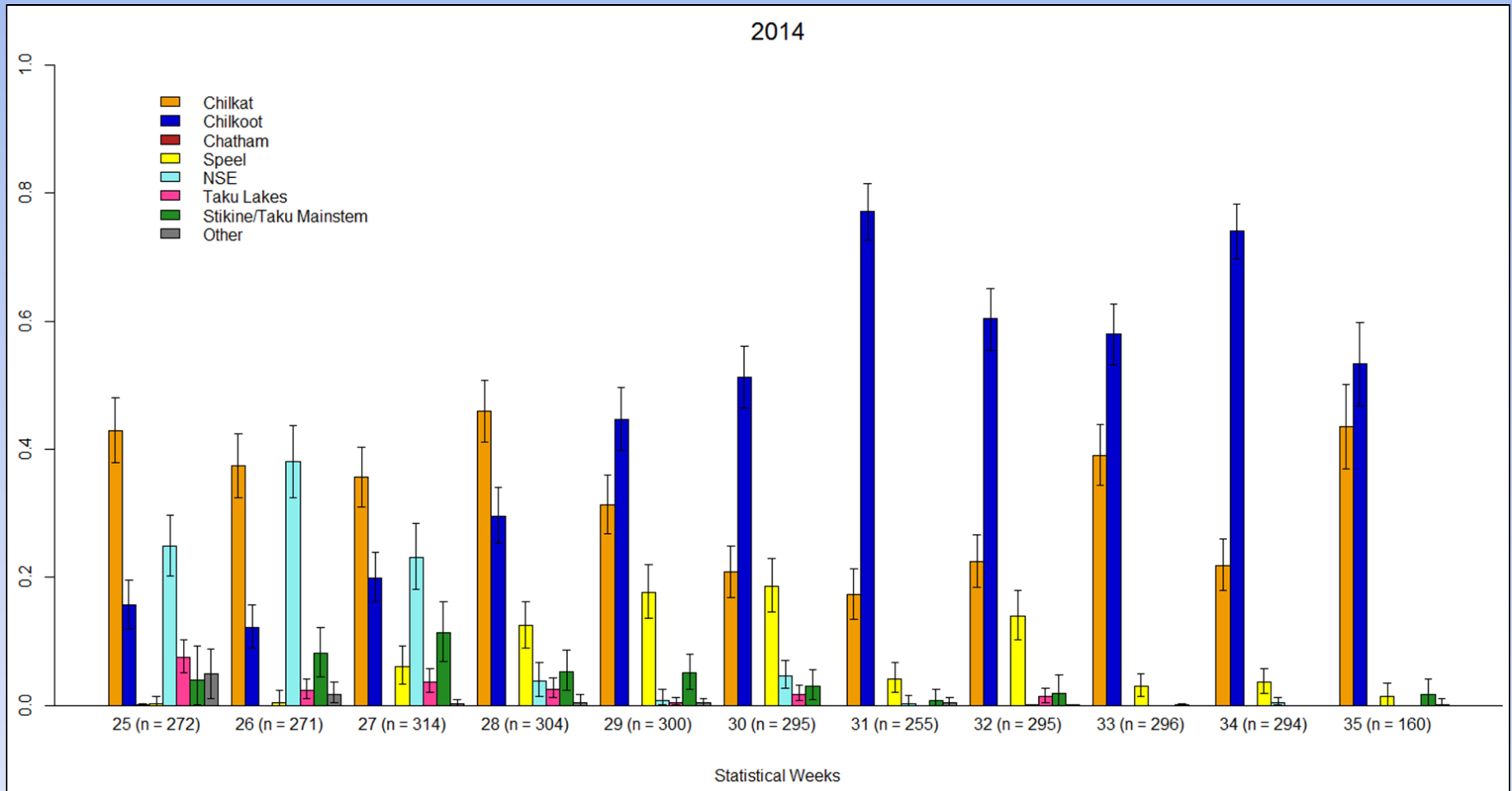
Stock composition estimates and 90% credibility intervals for sockeye salmon captured in the District 115 drift gillnet fishery, by statistical week and post-season reporting group, 2012.



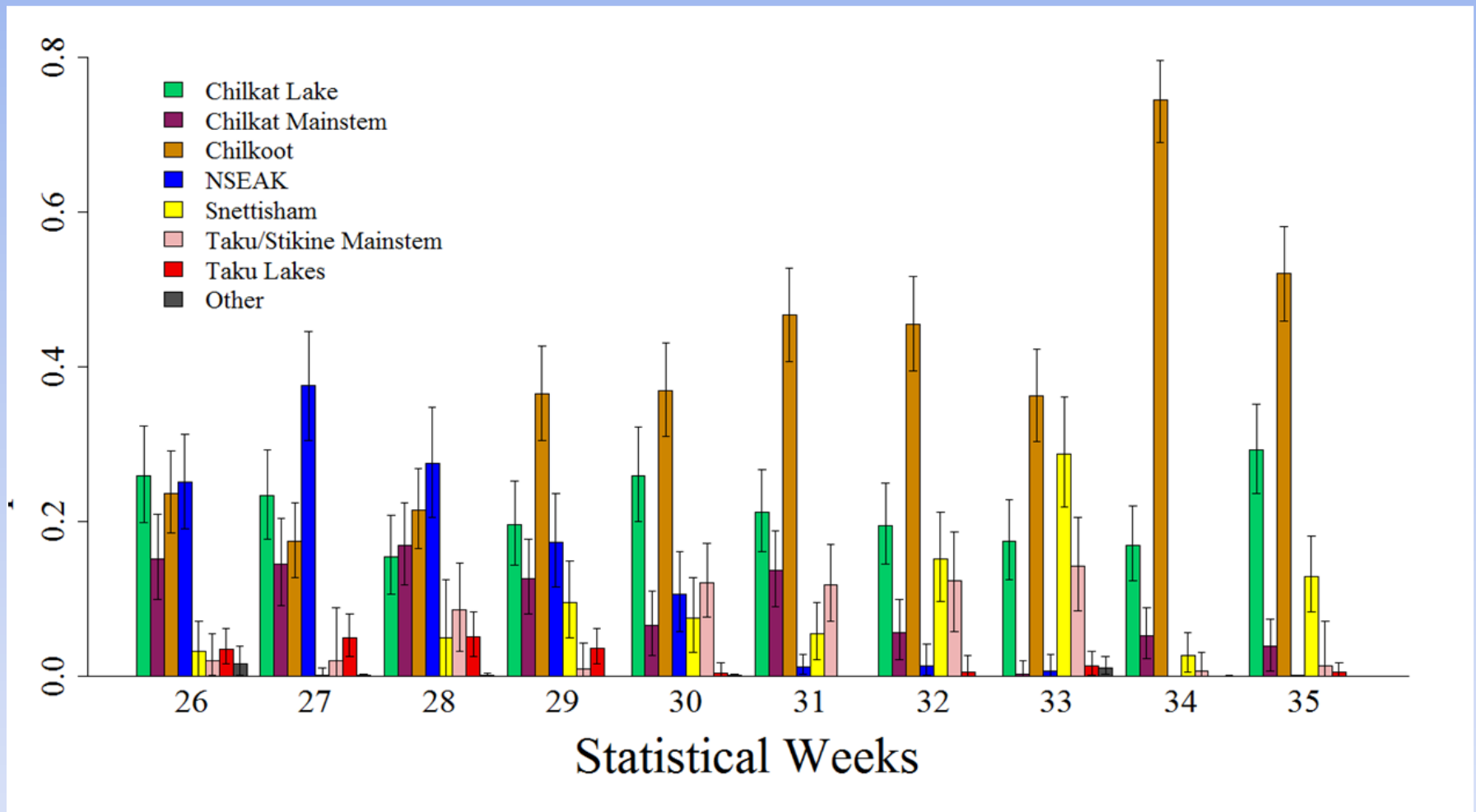
Stock composition estimates and 90% credibility intervals for sockeye salmon captured in the District 115 drift gillnet fishery, by statistical week and post-season reporting group, 2013.



Stock composition estimates and 90% credibility intervals for sockeye salmon captured in the District 115 drift gillnet fishery, by statistical week and post-season reporting group, 2014.



Stock composition estimates and 90% credibility intervals for sockeye salmon captured in the District 115 drift gillnet fishery, by statistical week and post-season reporting group, 2015.



Stock composition estimates and 90% credibility intervals for sockeye salmon captured in the District 115 drift gillnet fishery, by statistical week and post-season reporting group, 2016.

