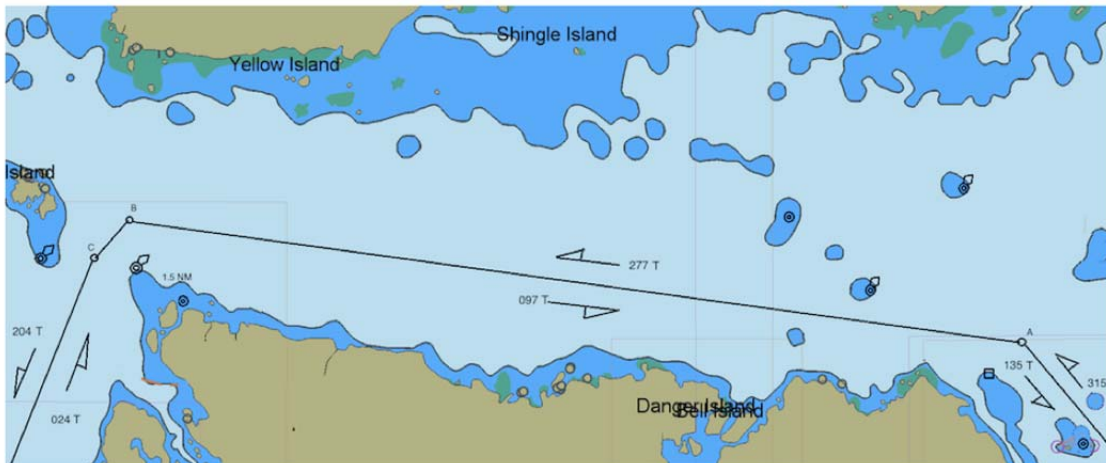


SOUTHEAST ALASKA MARINE SAFETY TASK FORCE MAY 2015
SUMNER STRAIT DEEP-DRAFT TRAFFIC STANDARD TRACKLINES
NOT FOR NAVIGATION – NOT FOR NAVIGATION – NOT FOR NAVIGATION



A: 56-21.0N / 133-09.5 W

B: 56-23.0N / 133-38.7W

C: 56-22.5N / 133-39.9 W

Voluntary vessel traffic procedures for gillnet fishing conditions and deep-draft ships. Traffic lanes, about 0.2 NM wide, are centered on the tracklines as shown.

REFERENCE COAST PILOT 8

Deep-Draft Traffic:

Secureite call 30-45 minutes prior to entering area and at regular intervals while transiting the area. Travel along tracklines as much as possible.

Deep Draft Vessels will avoid overtaking near Gillnet areas if possible

Gillnet Fishing Vessels;

Mark net end with lights and radar reflectors;
Monitor VHF CH 13 & 16 for broadcasts;
Warn other gillnetters if they appear in the traffic lane and deep-draft ships are approaching.
Do not place sleep sets within or adjacent to tracklines.
Provide for two-way traffic of large vessels along the designated tracklines.

Point Baker Cruise Ship ETA's 2018

For General informational use only. Use at your own risk.

JUNE 2018 - PT BAKER

Sunday	Monday	Tuesday	Wednesday	Thursday	Friday	Saturday
					1	2
3	4	5	6	7	8	9
10	11	12	13	14	15	16
17	18 WB 3 @2100 EB 2 @0300	19 WB 2 @2100	20 WB 1 @2100 WB 1 @2100 EB 1 @0230	21 EB 2 @0000 EB 2 @0300 WB1 @2300	22 2EB 0015 1EB 0400 2EB 0730 1WB 2000	23 EB 0100 EB 0300 EB 0600 1WB 2000
24 EB 0030 WB 2100 WB 2200	25 EB 0015 WB 2100 2 EB 0300	26 2WB 2100 1WB 2345	27 WB 2215 EB 0015 EB 0230	28 2EB 0015 2EB 0315	29 2EB 0015 EB 0400 EB 0715	30 EB 0400
<p>24 HR CLOCK IS USED 0000 IS MIDNIGHT - ETAS ARE APPROXIMATE AND SUBJECT TO CHANGE NUMBER OF SHIPS EXPECTED WB- WEST BOUND SHIPS APPROACHING POINT BAKER EB- EAST BOUND SHIPS APPROACHING POINT BAKER FROM THE SOUTH LISTEN FOR SECURITE CALLS VHF CH 16 & 13</p>						

Point Baker Cruise Ship ETA's 2018

For General informational use only. Use at your own risk.

JULY 2018 - PT BAKER

Sunday	Monday	Tuesday	Wednesday	Thursday	Friday	Saturday
1 2 EB 0100 2WB 2100 WB 2030	2 WB 0100 2EB 0300 2WB 2030	3 2WB 2100 EB 0230	4 EB 0230 WB 2300	5 2 EB 0030 EB 0230 WB 2345	6 2EB 0030 EB 0400 EB 0800 WB 2000	7 EB 0400 EB 0600 WB 2000
8 EB 0030 WB 2100 WB 2200	9 WB 0100 2EB 0300 WB 2000 WB 2100	10 2WB 2100 EB 0030	11 EB 0030 EB 0230 2WB 2200	12 2 EB 0030 2 EB 0300	13 2 EB 0030 EB 0200 EB 0700 WB 2200	14 WB 2030
15 EB 0030 2 WB 2200 WB 2330	16 2 EB 0300 WB 2100 WB 2200	17 2 WB 2100	18 EB 0230 WB 2000 WB 2300	19 2 EB 0030 2 EB 0300	20 2 EB 0030 EB 0400 EB 0700 WB 2000	21 EB 0230 EB 0600
22 EB 0030 WB 2100 WB 2200	23 2EB 0300 EB 0530 WB 2000 WB 2100	24 EB 0200 2 WB 2100	25 EB 0230 WB 2200 WB 2330	26 2 EB 0030 2 EB 0300	27 2 EB 0030 EB 0400 EB 0700 WB 2200	28 EB 0400 WB 2000 WB 2100
29 EB 0030 2 WB 2200	30 2EB 0300 WB 2000 WB 2100	31 2 WB 2100				
<p>24 HR CLOCK IS USED 0000 IS MIDNIGHT - ETAS ARE APPROXIMATE AND SUBJECT TO CHANGE NUMBER OF SHIPS EXPECTED WB- WEST BOUND SHIPS APPROACHING POINT BAKER EB- EAST BOUND SHIPS APPROACHING POINT BAKER FROM THE SOUTH LISTEN FOR SECURITE CALLS VHF CH 16 & 13</p>						

Point Baker Cruise Ship ETA's 2018

For General informational use only. Use at your own risk.

AUG 2018 - PT BAKER

Sunday	Monday	Tuesday	Wednesday	Thursday	Friday	Saturday
			1 EB 0230 WB 2345	2 2EB 0030 2EB 0300	3 2EB 0030 EB 0400 WB 2000	4 EB 0400 EB 0600
5 EB 0030 WB 2100 WB 2200 WB 0330	6 2EB 0330 EB 0530 WB 2000 WB 2100	7 EB 0230 WB 2000 2WB 2100	8 EB 0230 WB 2200	9 2EB 0030 2EB 0300	10 2EB 0030 EB 0400 EB 0700 WB 2200	11 EB 0400 WB 2000
12 EB 0030 WB 0400 2WB 2200	13 2EB 0300 WB 2000 WB 2100	14 2WB 2100	15 EB 0230 WB 2345	16 2EB 0030 2EB 0300	17 2EB 0030 EB 0300 EB 0730 WB 2000	18 EB 0400 EB 0600
19 EB 0030 WB 2100 WB 2200	20 2EB 0330 EB 0530 WB 2000 WB 2100	21 EB 0230 WB 1900 2WB 2100	22 EB 0230 WB 2200	23 2EB 0030 2EB 0300	24 2EB 0030 EB 0300 EB 0730	25 2 EB 0330 WB 2130
26 EB 0030 WB 0300 2WB 2200	27 2EB 0030 WB 2000 WB 2100 WB 2300	28 2WB 2100	29 EB 0230 WB 2345	30 2EB 0030 2EB 0300	31 2EB 0030 EB 0300 EB 0730 WB 2000	
<p>24 HR CLOCK IS USED 0000 IS MIDNIGHT - ETAS ARE APPROXIMATE AND SUBJECT TO CHANGE NUMBER OF SHIPS EXPECTED WB- WEST BOUND SHIPS APPROACHING POINT BAKER EB- EAST BOUND SHIPS APPROACHING POINT BAKER FROM THE SOUTH LISTEN FOR SECURITE CALLS VHF CH 16 & 13</p>						

Point Baker Cruise Ship ETA's 2018

For General informational use only. Use at your own risk.

SEPT 2017 - PT BAKER

Sunday	Monday	Tuesday	Wednesday	Thursday	Friday	Saturday
						1 EB 0330 WB 2100 WB 2200
2 EB 0330 WB 2000 WB 2100	3 EB 0330 WB 2000 WB 2100	4 EB 0230 2WB 2100	5 EB 0230 WB 2345	6 2EB 0030 2EB 0300	7 2EB 0230 EB 0400	8 EB 0300 WB 2030
9 EB 0130 WB 2200	10 2EB 0330 WB 0130 WB 2100	11 EB 0330 2WB 2100	12 EB 0230 WB 2345	13 2EB 0030 2EB 0300	14 2EB 0030 EB 0300 WB 2230	15 EB 0600 WB 2100
16	17 2EB 0330 WB 2100	18 EB 2100	19 WB 2100 WB 2345	20 2 EB 0030 EB 0330	21 2 EB 0030 2 EB 0330	22
23 2WB 2200	24 EB 0330 WB 2100	25	26	27 EB 0015 EB 0330	28 EB 0015 EB 0130 EB 0330	29
30		24 HR CLOCK IS USED 0000 IS MIDNIGHT - ETAS ARE APPROXIMATE AND SUBJECT TO CHANGE NUMBER OF SHIPS EXPECTED WB- WEST BOUND SHIPS APPROACHING POINT BAKER EB- EAST BOUND SHIPS APPROACHING POINT BAKER FROM THE SOUTH LISTEN FOR SECURITE CALLS VHF CH 16 & 13				