

2012 Lynn Canal (District 15) Commercial Drift Gillnet Fishery Season Summary



2012 drift gillnet task force meeting
December 4, 2012 Juneau

2012 Preseason expectations:

- Well above average hatchery chum salmon returns to the southern district.
- Below average Chilkat Chinook salmon return. (Chilkat River king salmon MP).
- Poor forecasted returns of Chilkat Lake sockeye salmon.
- Above average return of Chilkoot Lake sockeye salmon.
- Average Chilkat River mainstem sockeye salmon return.
- Average coho salmon return.
- Above average Chilkat River drainage fall chum salmon return.
- Above average participation in the District.

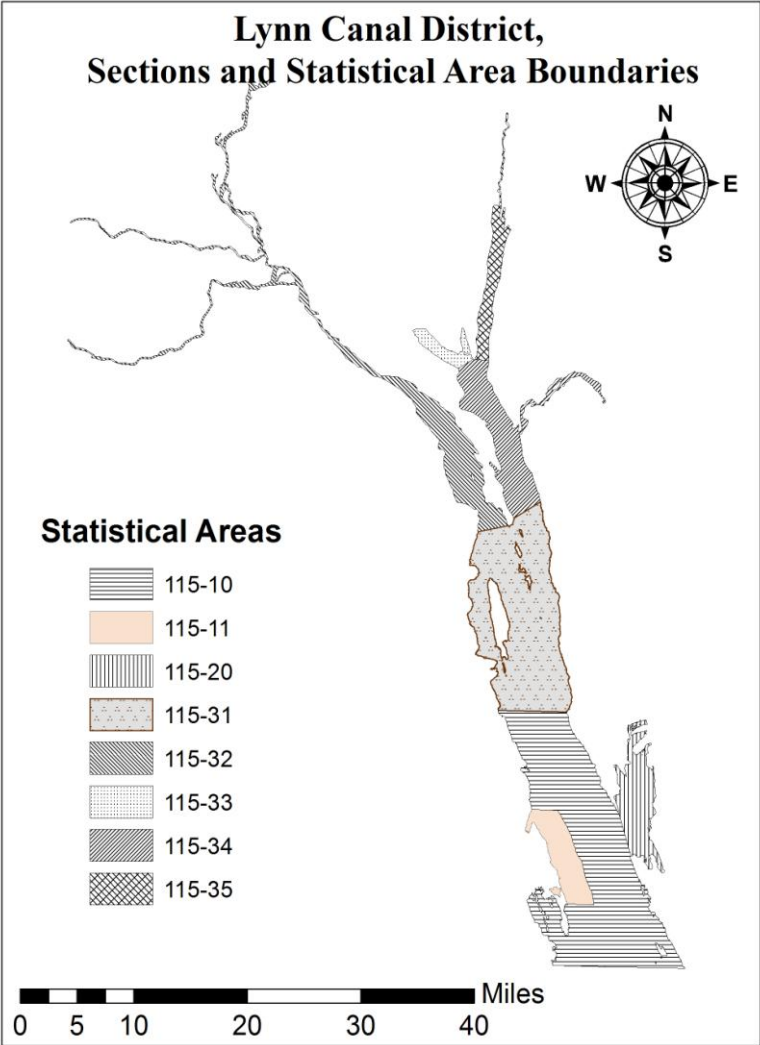


Table 1. 2012 District 15 Commercial Drift Gillnet Effort and Harvest

	Stat Week	Days Open	Boats	Boat Days	Chinook	Sockeye	Coho	Pink	Chum
Summer Management	25	2	120	240	438	3,529	45	10	47,578
	26	3	175	525	396	7,177	156	829	162,195
	27	3	211	633	401	12,248	151	5,835	262,821
	28	3	208	624	180	17,118	270	25,381	458,561
	29	4	195	780	211	44,066	106	71,072	335,845
	30	4	147	588	285	60,363	96	65,048	150,314
	31	5	127	635	336	42,057	163	59,309	43,516
	32	5	95	475	148	12,680	179	32,103	13,552
Fall Management	33	4	70	280	166	18,029	706	64,285	11,670
	34	5	63	315	92	4,529	1,138	27,161	9,084
	35	5	71	355	29	1,879	2,787	2,185	19,579
	36	5	70	350	38	757	6,041	103	24,822
	37	2	73	146	7	124	2,864	0	8,996
	38	2	55	110	6	51	3,843	0	10,797
	39	2	44	88	1	35	4,581	0	7,645
	40	2	22	44	0	1	195	0	273
Fishery Total:	56	239	6,188	2,738	224,643	23,321	353,365	1,567,248	
2002-2011 Average:	60	151	3,883	755	103,425	41,597	150,341	784,732	
2012 % of Average:	93%	158%	159%	362%	217%	56%	235%	200%	

Figure 1. D-15 drift gillnet harvest, 2012

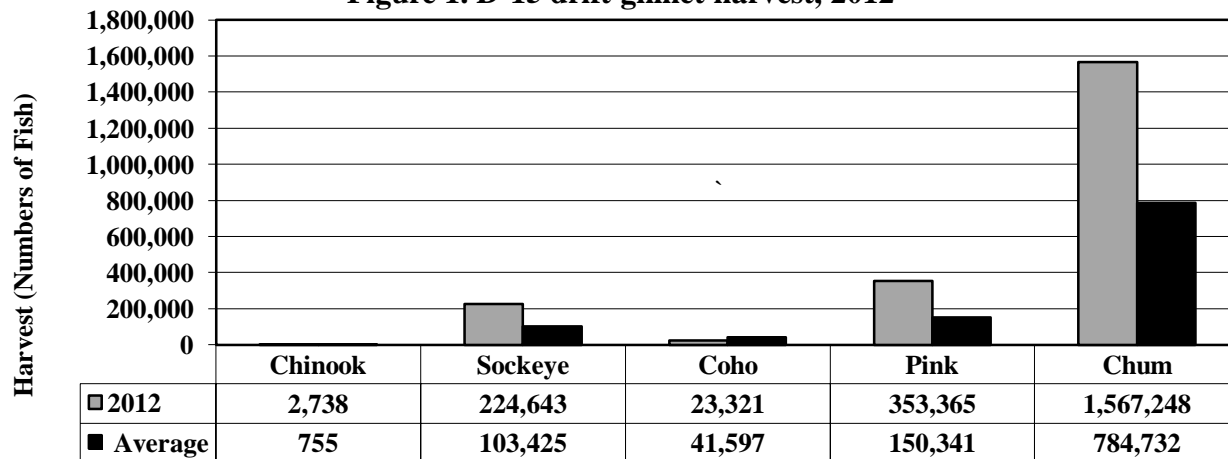
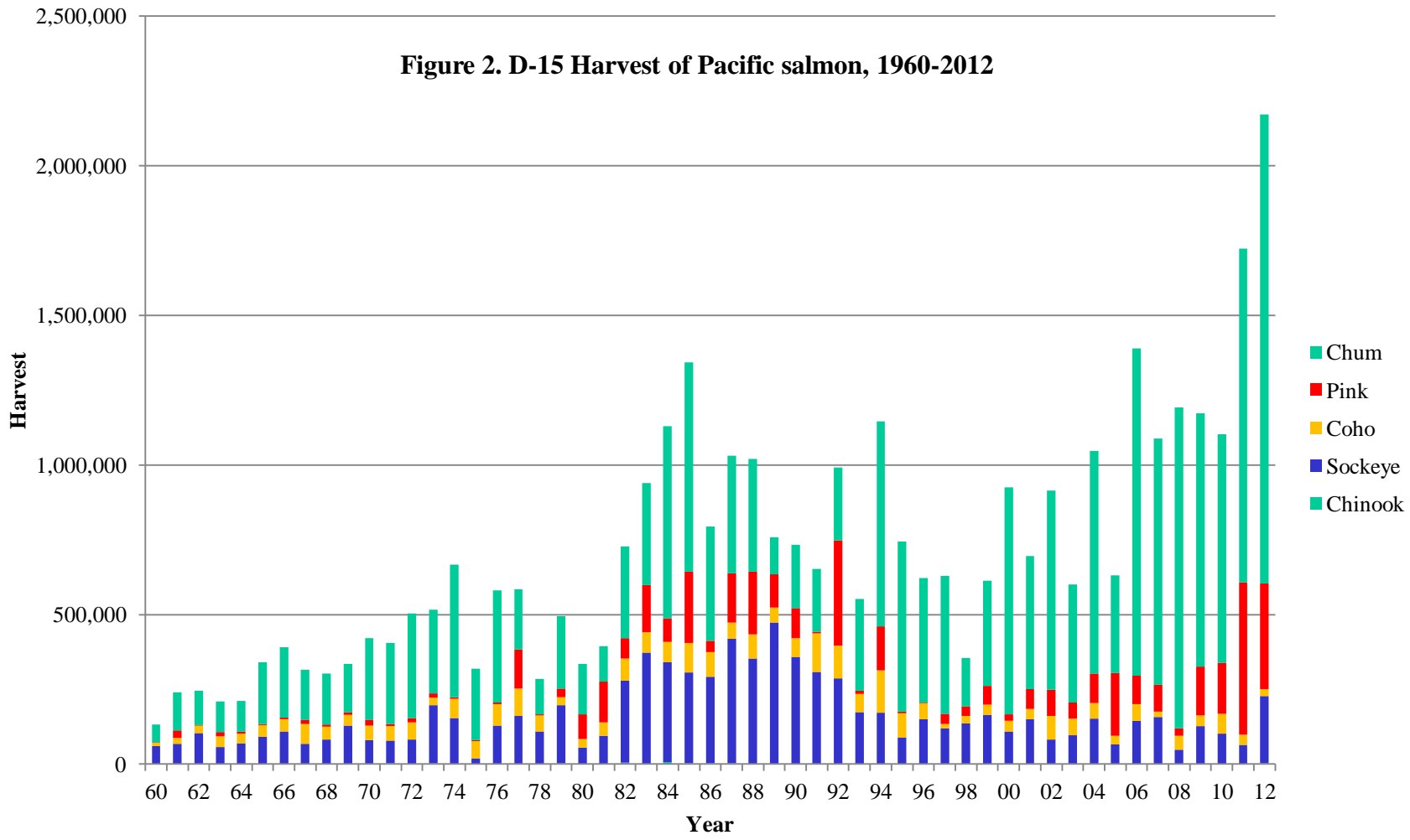
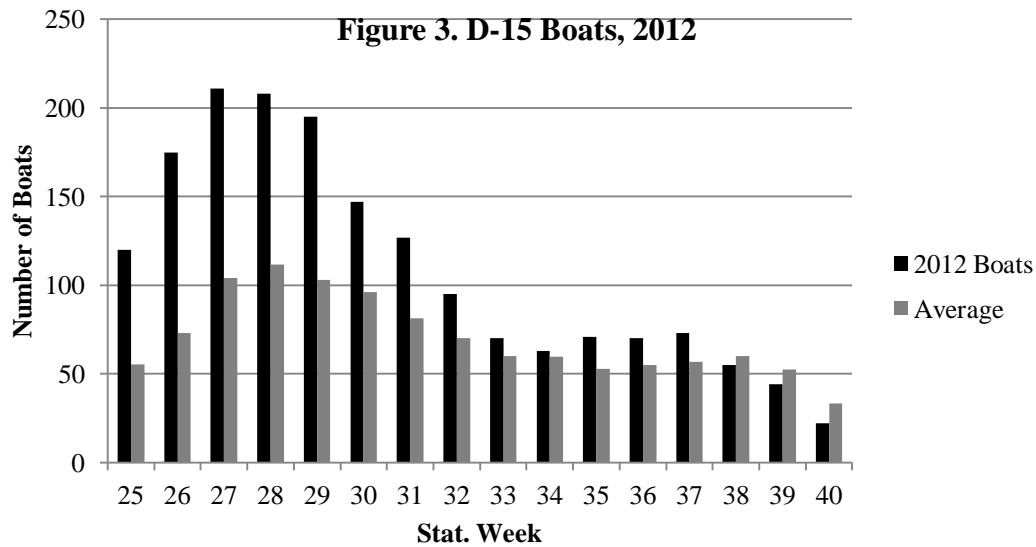


Figure 2. D-15 Harvest of Pacific salmon, 1960-2012





239 unique permits fished D-15 in 2012. 1980-2011 average is 209. **Highest since 1990 (270).** 220 in 2011.

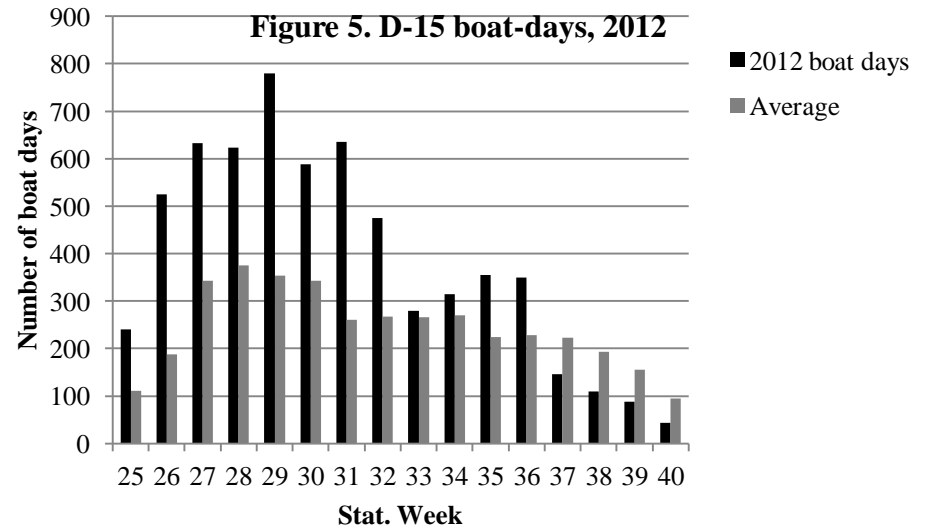
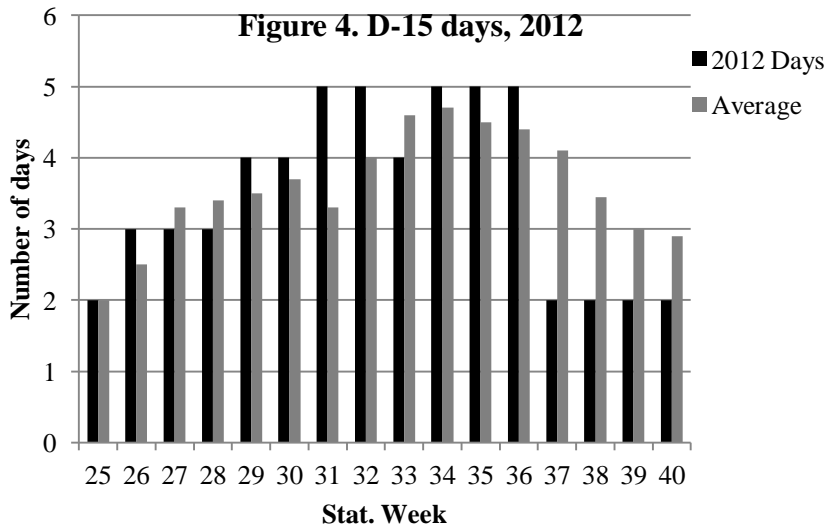
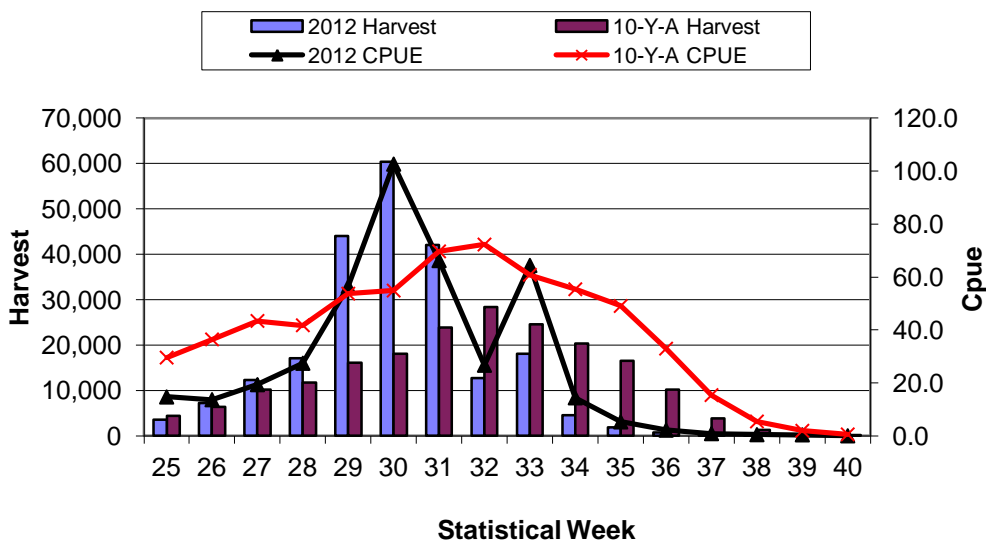


Fig. 6. 2012 District 15 Weekly Sockeye Harvest and CPUE



District 15 Sockeye Harvest

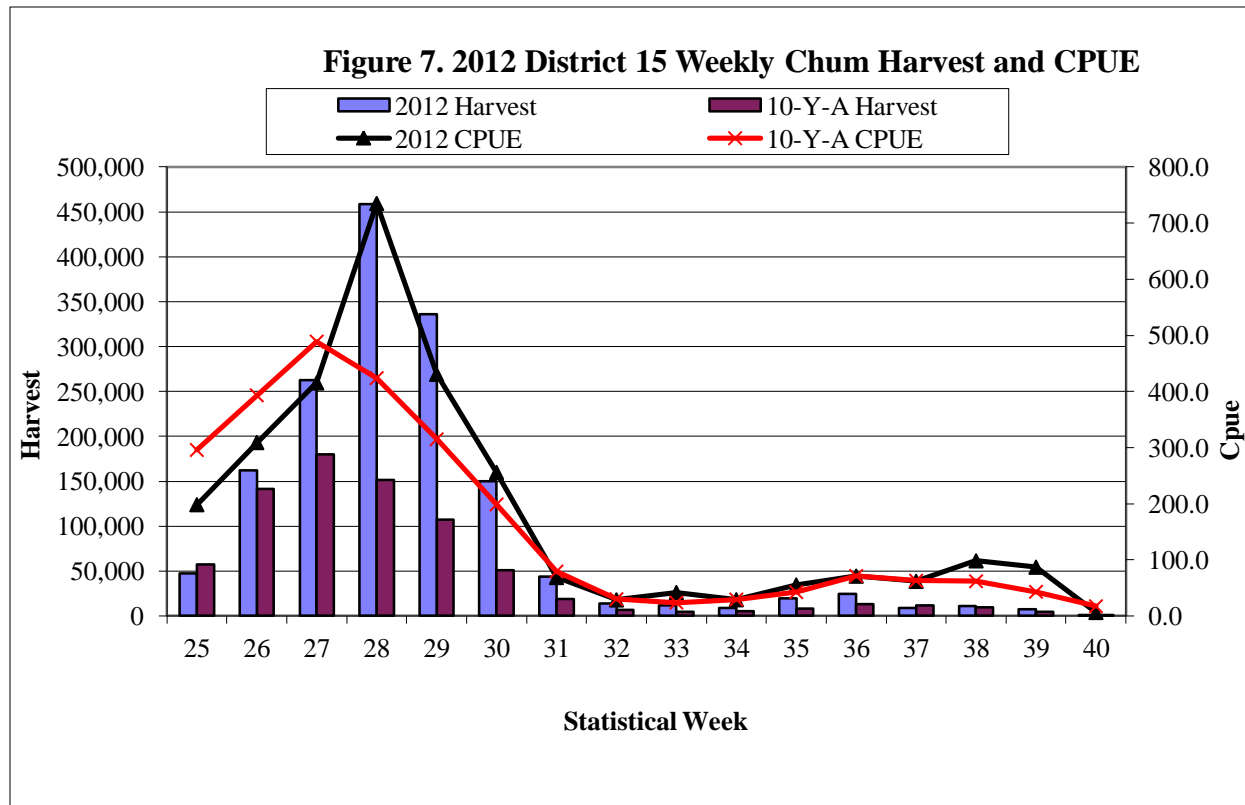
- Total sockeye = 224,640 (1.2 times the 10-year average)
- Chilkoot Lake = 123,743 (55%), (1.3 times the 10-year average).
- Chilkat Lake = 54,540 (24%), (67% of the 10-year average).
- Others = 45,103 (21%), (3 times the 10-year average).

Table 2. D-15 Sockeye salmon commercial catch sampling results, 2012.

State	week	Sample size	Chilkat	Chilkoot	Other	Total
	25	348	843	1,775	833	3,450
	26	382	1,795	3,309	2,038	7,142
	27	407	3,209	5,428	3,569	12,205
	28	395	4,456	6,727	5,742	16,925
	29	431	10,761	20,189	13,220	44,170
	30	435	10,216	38,104	11,735	60,055
	31	391	8,136	28,903	4,817	41,856
	32	340	3,964	7,414	1,101	12,479
	33	421	7,037	9,041	1,877	17,955
	34	415	1,946	2,348	95	4,389
	35	465	1,459	338	52	1,849
	36	Wk 35	575	133	20	728
	37	Wk 35	82	19	3	104
	38	Wk 35	35	8	1	44
	39	Wk 35	28	6	1	35
	40	Wk 35	1	0	0	1
Total		4,430	54,540	123,743	45,103	224,643

Table 3. Sockeye harvest by week and section in D-15, 2012.

STAT WEEK	Section		
	15A	15C	Grand Total
25	287	3,242	3,450
26	687	6,492	7,142
27	2,336	9,910	12,205
28	1,491	15,627	16,925
29	6,909	37,157	44,170
30	35,088	25,275	60,055
31	29,523	12,534	41,856
32	10,053	2,627	12,479
33	14,245	3,784	17,955
34	3,141	1,388	4,389
35	1,199	680	1,849
36	491	266	728
37	106	18	104
38	33	11	44
39	28	7	35
40	0	1	1
Grand Total	105,617	119,026	224,643



Summer Chum Harvest = 1,486,042 (2 times the 10-year average)

Fall Chum Harvest = 81,206 (1.4 times the 10-year average)

Total Chum Harvest = 1,567,248 (Over 2 times the average, highest on record)

Figure 8. 2012 Chilkoot Lake sockeye weir counts

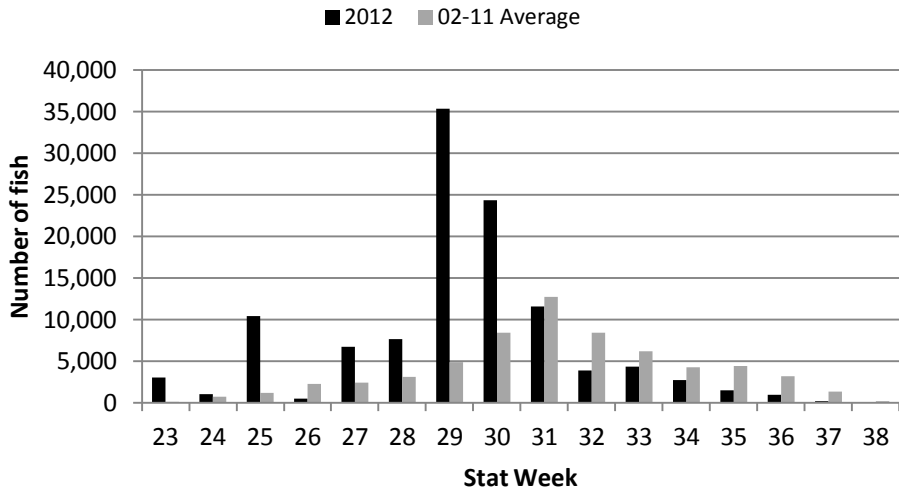


Figure 9. 2012 Cumulative Chilkoot Lake sockeye weir counts

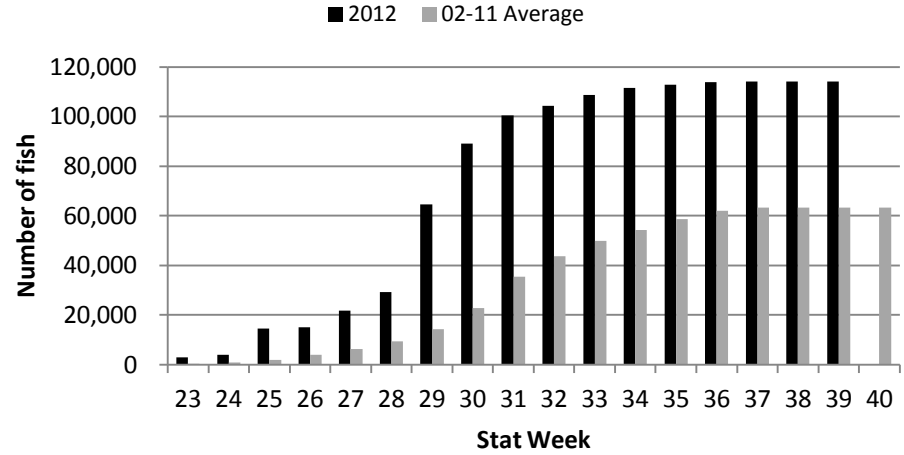


Figure 10. 2012 Chilkoot Weir Counts Compared to Escapement Goals

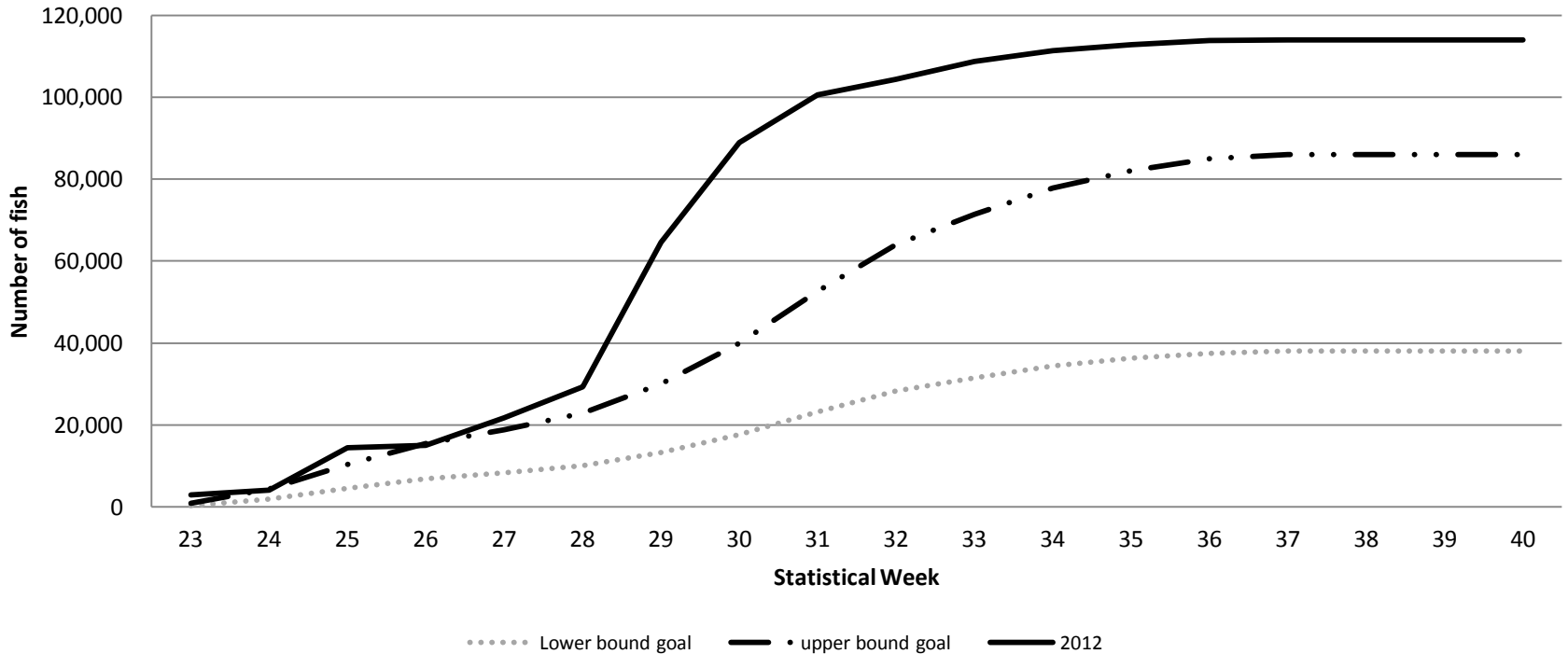


Figure 11. 2012 Chilkat Lake weekly DIDSON counts

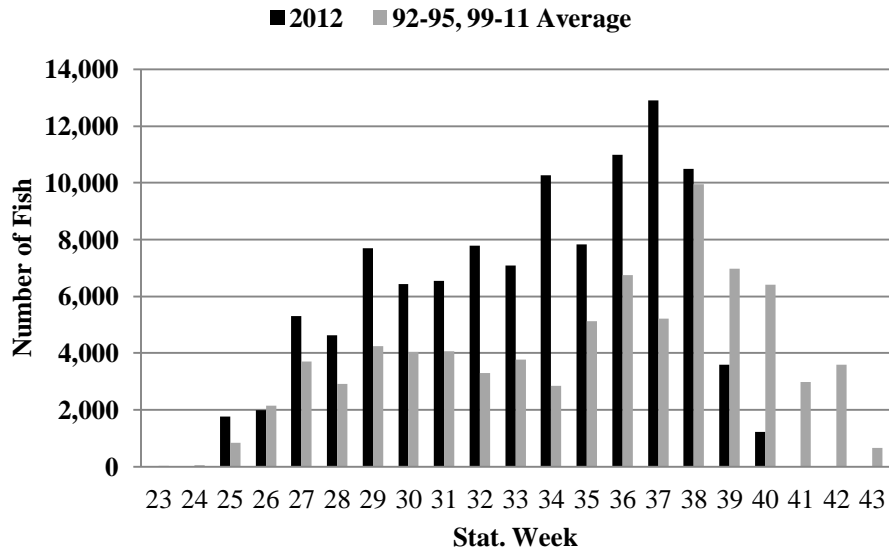


Figure 12. 2012 Chilkat Lake DIDSON cumulative counts

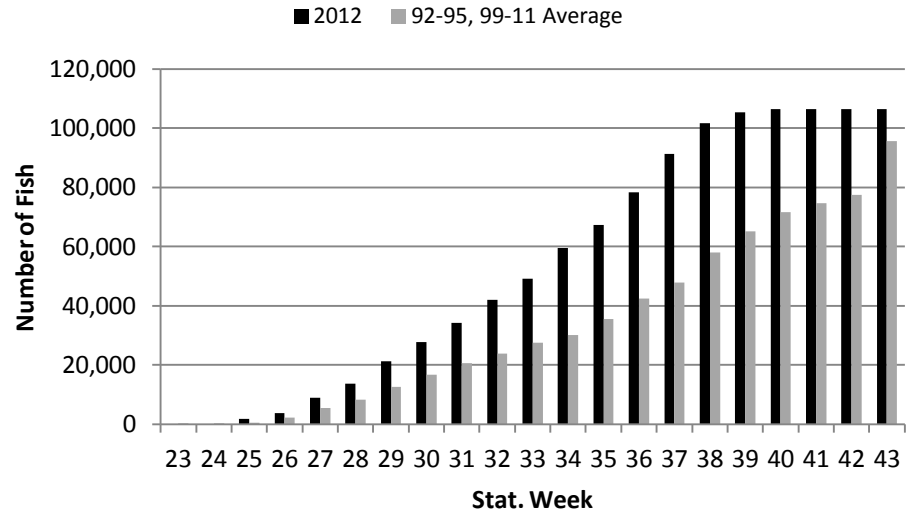


Figure 13. 2012 Chilkat Weir DIDSON counts compared to escapement goals

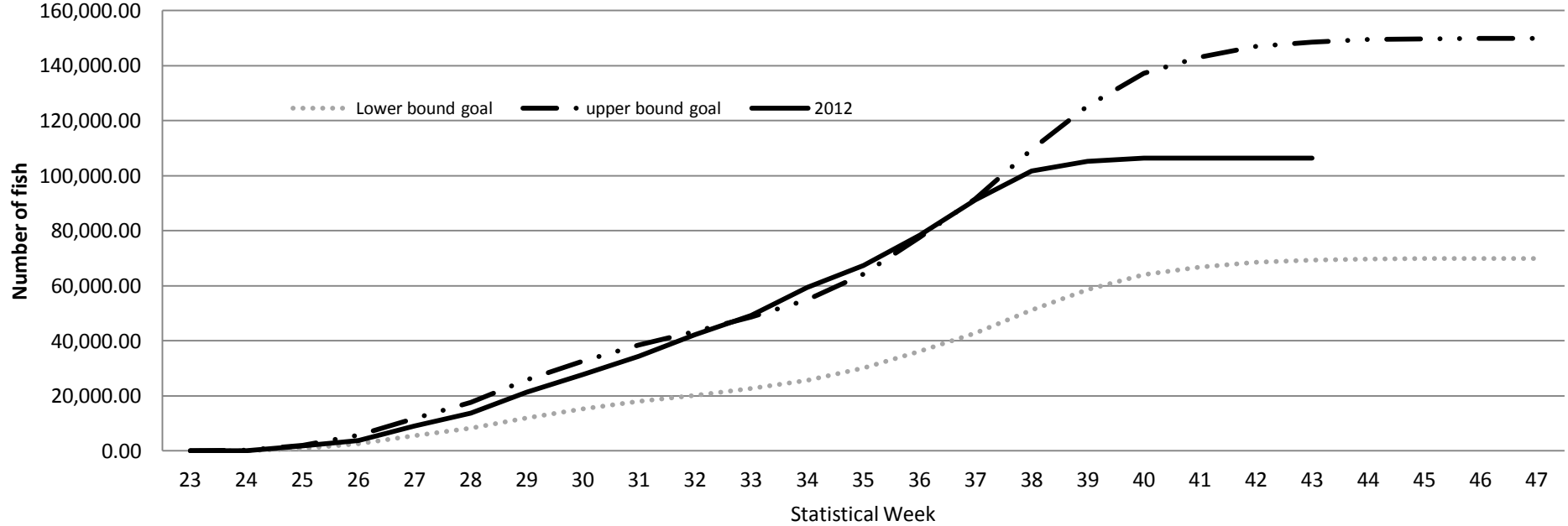


Figure 14. Chilkat River mainstem sockeye salmon escapement, 1994-2012

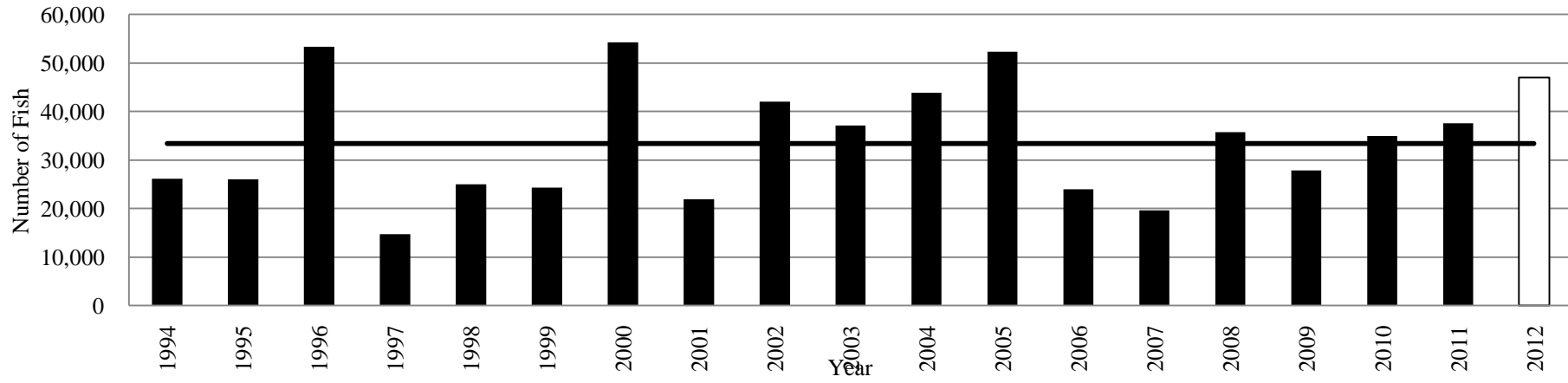
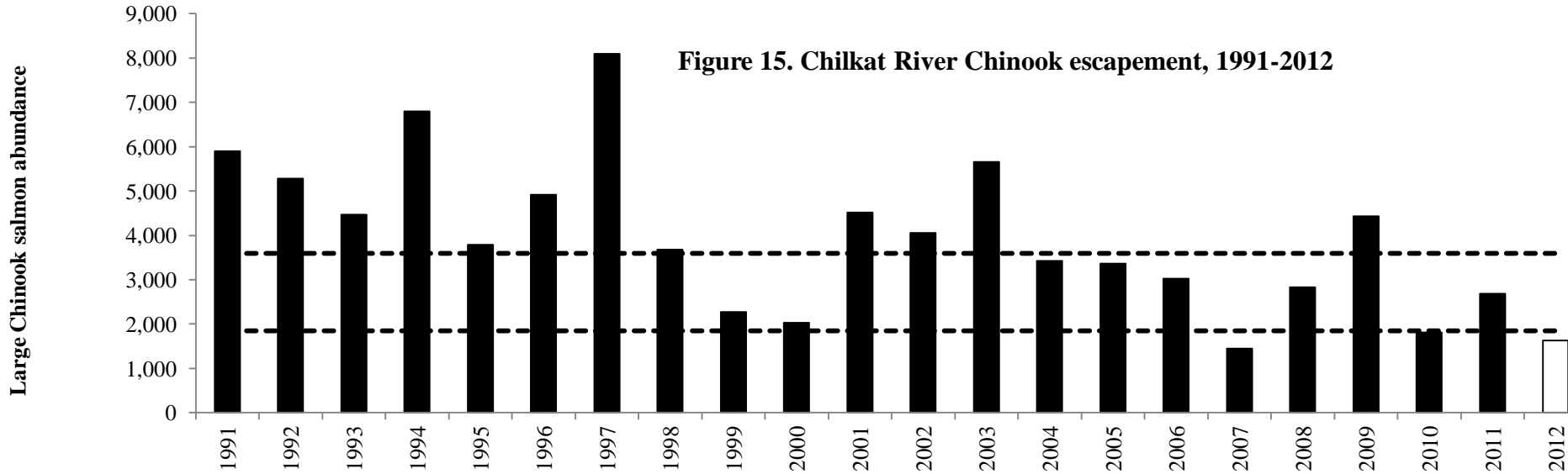
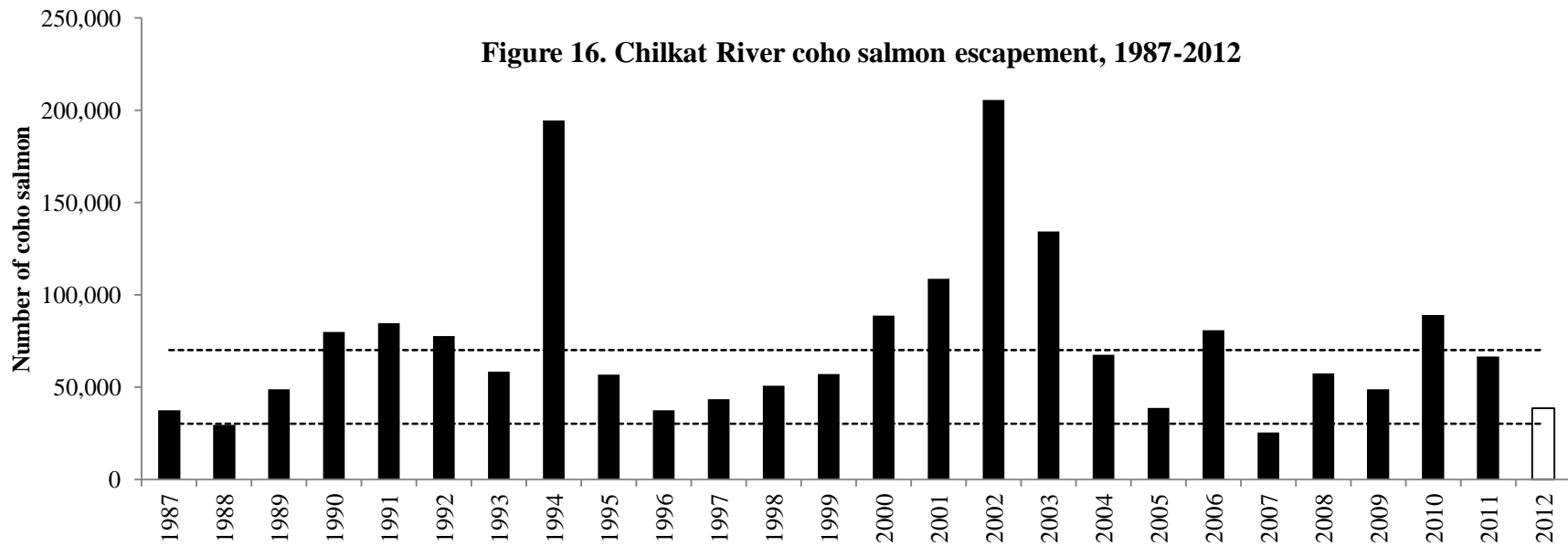


Figure 15. Chilkat River Chinook escapement, 1991-2012





Berners Bay escapements

- Sockeye salmon returns were average.
- Coho salmon, 5,480 adults counted. Within escapement goals (4,000-9,200).

Pink and chum salmon escapements.

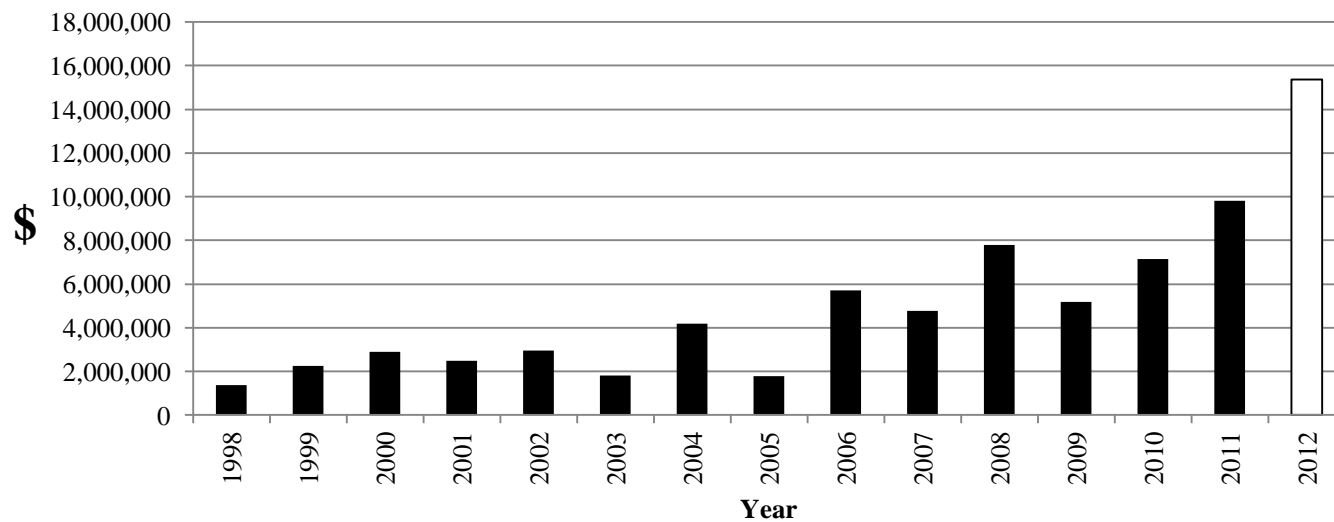
- Pink salmon escapements were good throughout the district.
- Summer chum salmon escapements were generally good on the eastern shore but below average in the Endicott River this year.

Chilkat River chum salmon

- Strong return to the Klehini River and around average for the lower Chilkat River spawning areas.



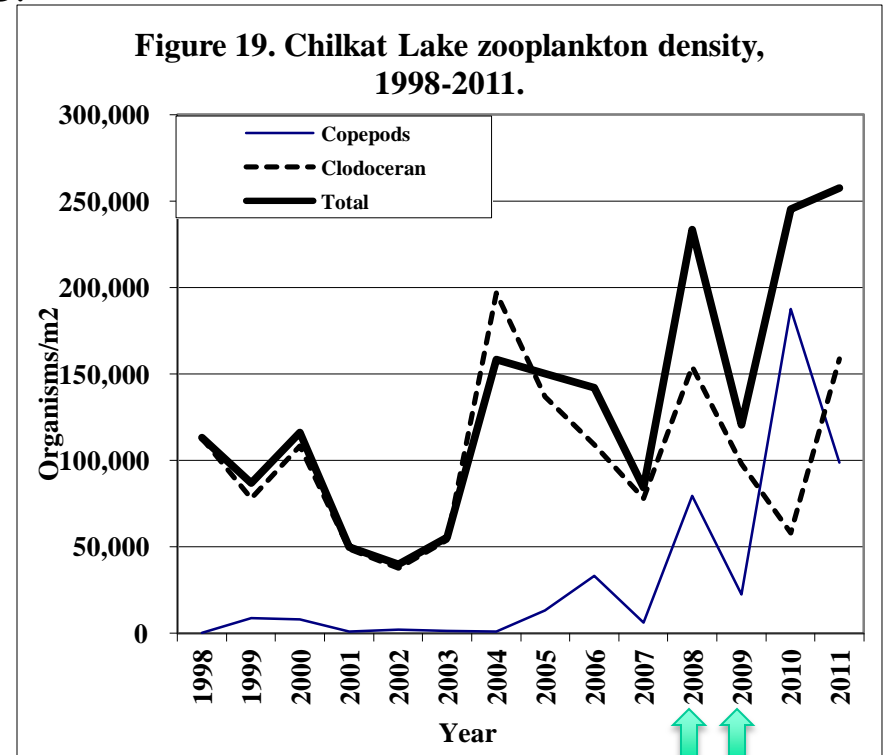
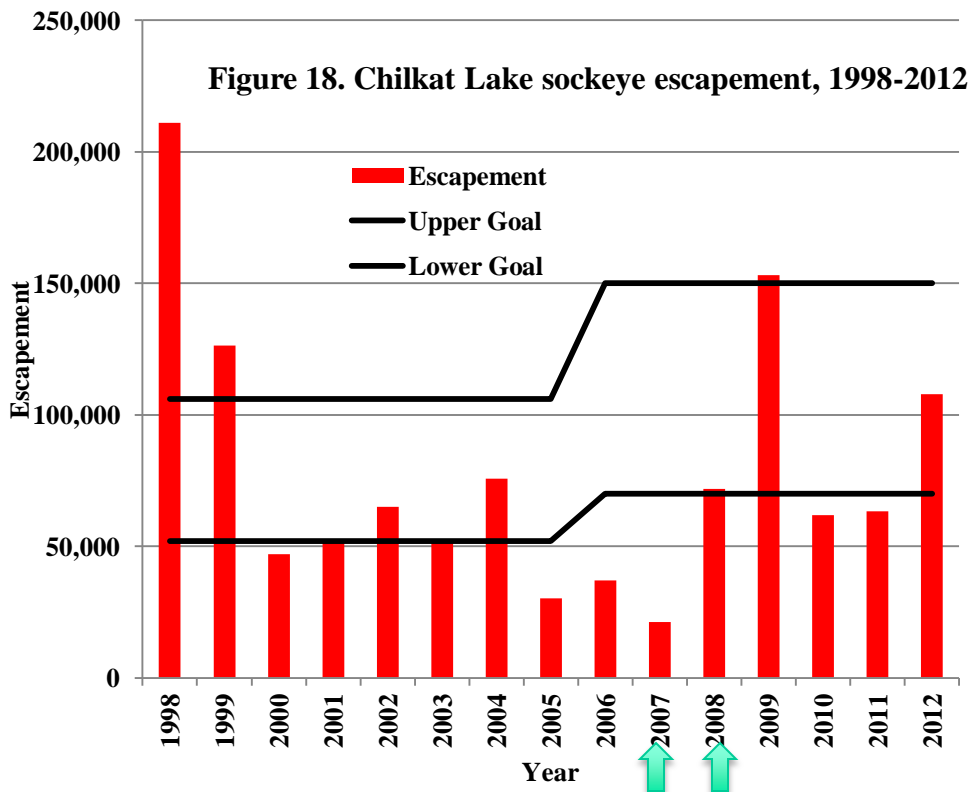
Figure 17. Lynn Canal drift gillnet salmon fishery value, 1998-2012



2013 Expectations

Chilkat Lake Sockeye Salmon-Is expected to be above average in run strength in 2013.

- Zooplankton levels were above average in Chilkat Lake for rearing smolt in 2009 and 2010.
- Parental year escapements were below the low end of the escapement goal ranges in 2007 and near this range in 2008 (brood years for 2013 return).
- The proportion of age-1.2 and 2.2 fish in the 2012 Chilkat Lake escapement was well above average indicating an above average return in 2013.



Chilkoot Lake sockeye- projection is for an average return in 2013.

- 2008 weir count of 34,000 fish was below the goal range of 38,000-86,000 fish.
- Lake productivity in 2009 (zoo density and rearing smolt density) was above average for rearing juveniles and below average for zooplankton.
- The proportion of age-1.2 sockeye in 2012 escapement was average. This may indicate an average number of age-1.3 fish in 2013.

Figure 20. Zooplankton and rearing sockeye salmon juvenile abundance for Chilkoot Lake, 1995-2011.

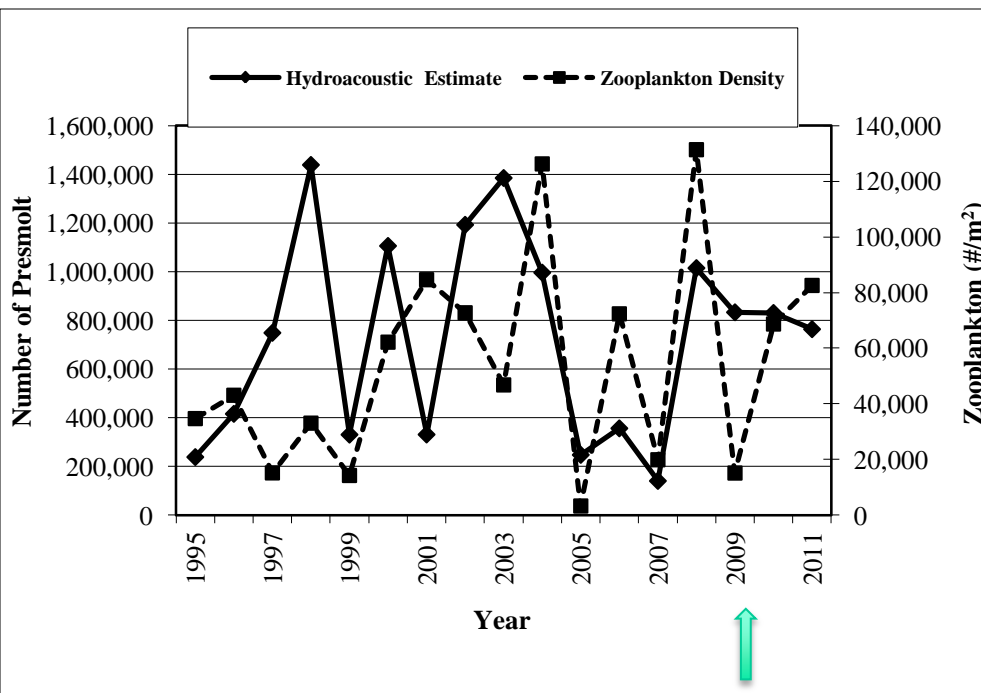


Figure 21. Chilkoot Lake sockeye escapement, 1998-2012

