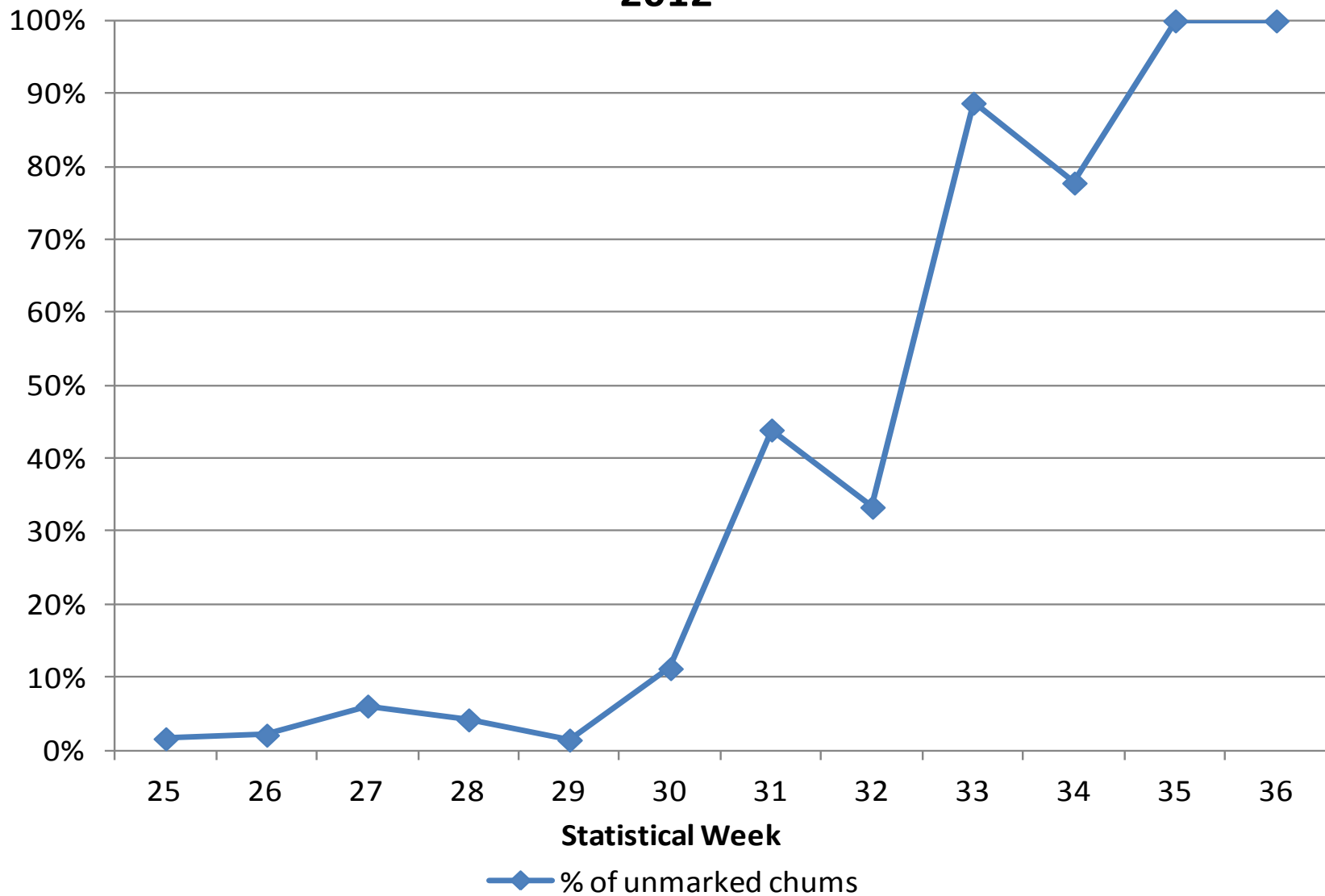
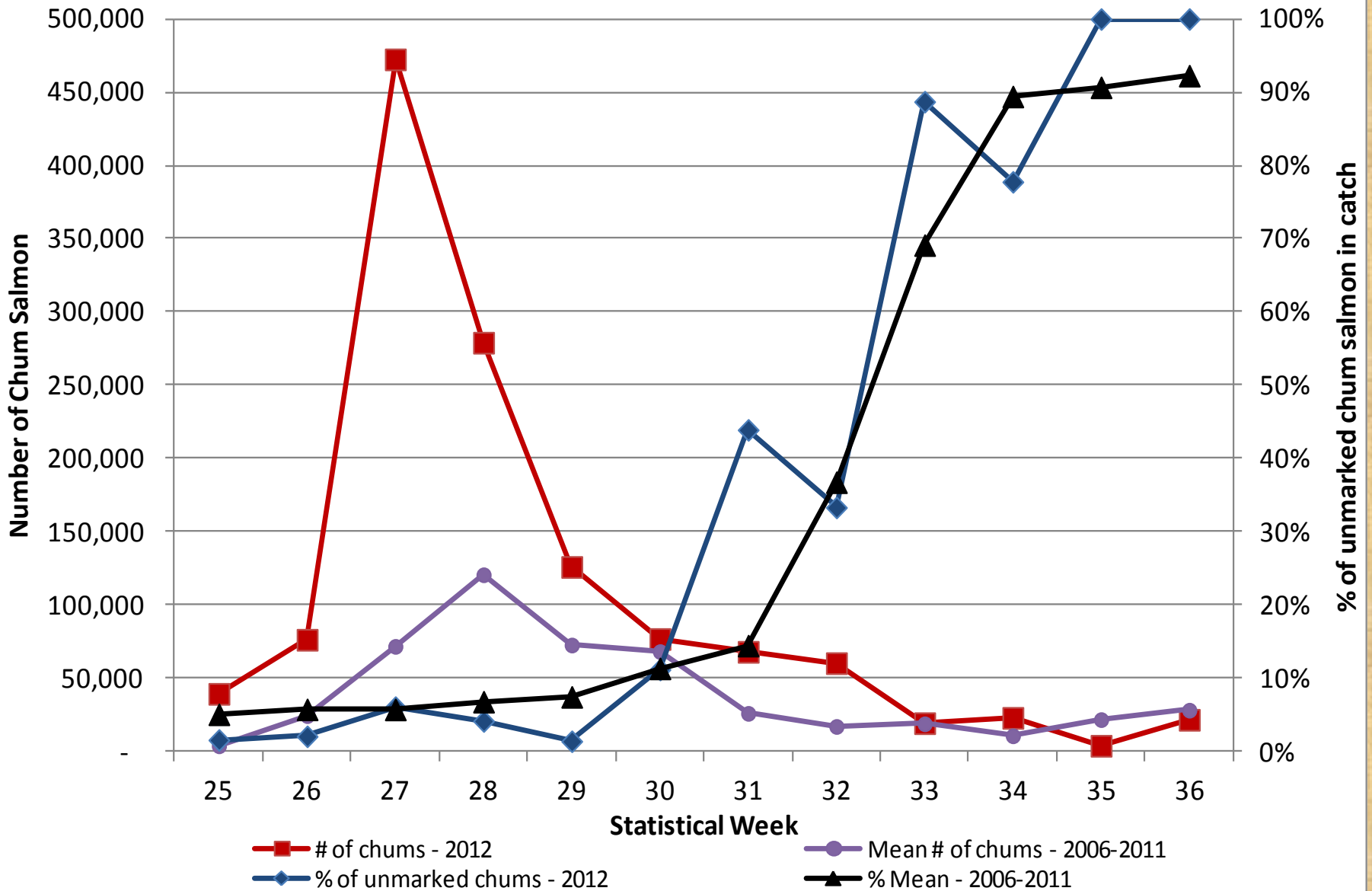


% of unmarked chums in District 2 purse seine catch - 2012



Total chum catch and % of unmarked chums in District 2 purse seine



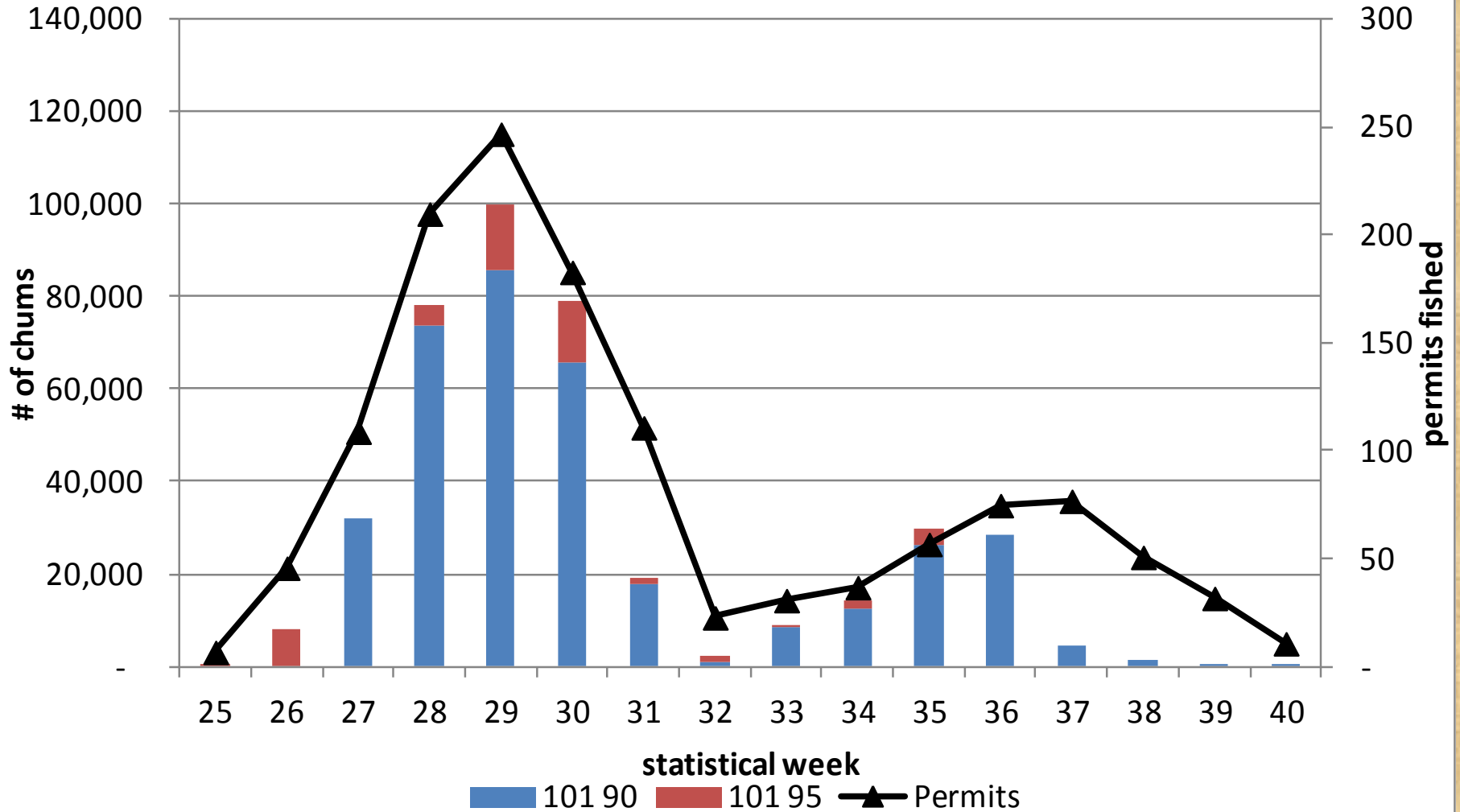
2012 West Behm Troll fishery

West Behm Canal Summer Chum Troll Fishery		Statistical Week															
Sub-District		25	26	27	28	29	30	31	32	33	34	35	36	37	38	39	40
101	90 Chum			32,113	73,849	85,812	65,681	17,626	895	8,309	12,642	26,236	28,261	4,493	1,307	130	3
	Boats			109	208	226	164	110	21	31	36	56	75	77	51	32	11
101	95 Chum	136	8,248		4,028	13,811	13,170	1,445	1,286	737	1,472	3,661					
	Boats	8	35		25	78	56	16	8	7	6	13					
	Total Chum	136	8,248	32,113	77,877	99,623	78,851	19,071	2,181	9,046	14,114	29,897	28,261	4,493	1,307	130	3
	Permits	7	46	109	210	247	183	111	23	31	37	57	75	77	51	32	11

Total Troll Harvest in West Behm and Neets Bay: 411,068

2012 West Behm Canal chum salmon troll fishery

West Behm Canal Chum Catch - Sub-Districts 101-90 and 101-95 (Neets Bay THA)



2012 Annette Island Harvest

Drift Gillnet

Stat Week	Chinook	Sockeye	Coho	Pink	Chum
24	30	297	29	18	681
25	337	1,819	107	359	8,844
26	282	4,436	311	5,283	39,898
27	163	2,353	276	27,111	37,098
28	265	2,732	959	41,301	48,479
29	165	1,314	592	25,458	68,538
30	86	2,240	1,123	38,702	48,596
31	54	1,118	1,772	64,736	25,210
32	6	122	238	17,733	2,308
33	6	165	624	44,641	8,662
34	-	57	2,850	18,956	10,275
35	2	22	3,469	21,997	18,454
36	-	1	6,647	2,700	16,262
37	-	-	9,245	-	5,400
38	-	-	4,171	-	2,012
39	-	-	3,911	-	456
40	-	-	1,360	-	165
TOTAL	1,396	16,676	37,684	308,995	341,338

Purse Seine

26	39	637	86	1,305	25,730
27	19	1,723	298	11,109	25,474
28	3	258	119	9,317	1,937
29	58	917	692	53,036	35,886
30	78	728	650	67,494	11,659
31	22	467	353	102,906	5,570
32	5	263	298	66,158	1,109
33	1	326	594	120,572	2,472
34	-	87	858	48,347	12,193
35	-	9	554	18,638	4,208
36	-	-	14	-	274
37	-	-	-	-	-
38	-	-	-	-	-
39	-	-	174	-	9
40	-	-	-	-	-
TOTAL	225	5,415	4,690	498,882	126,521

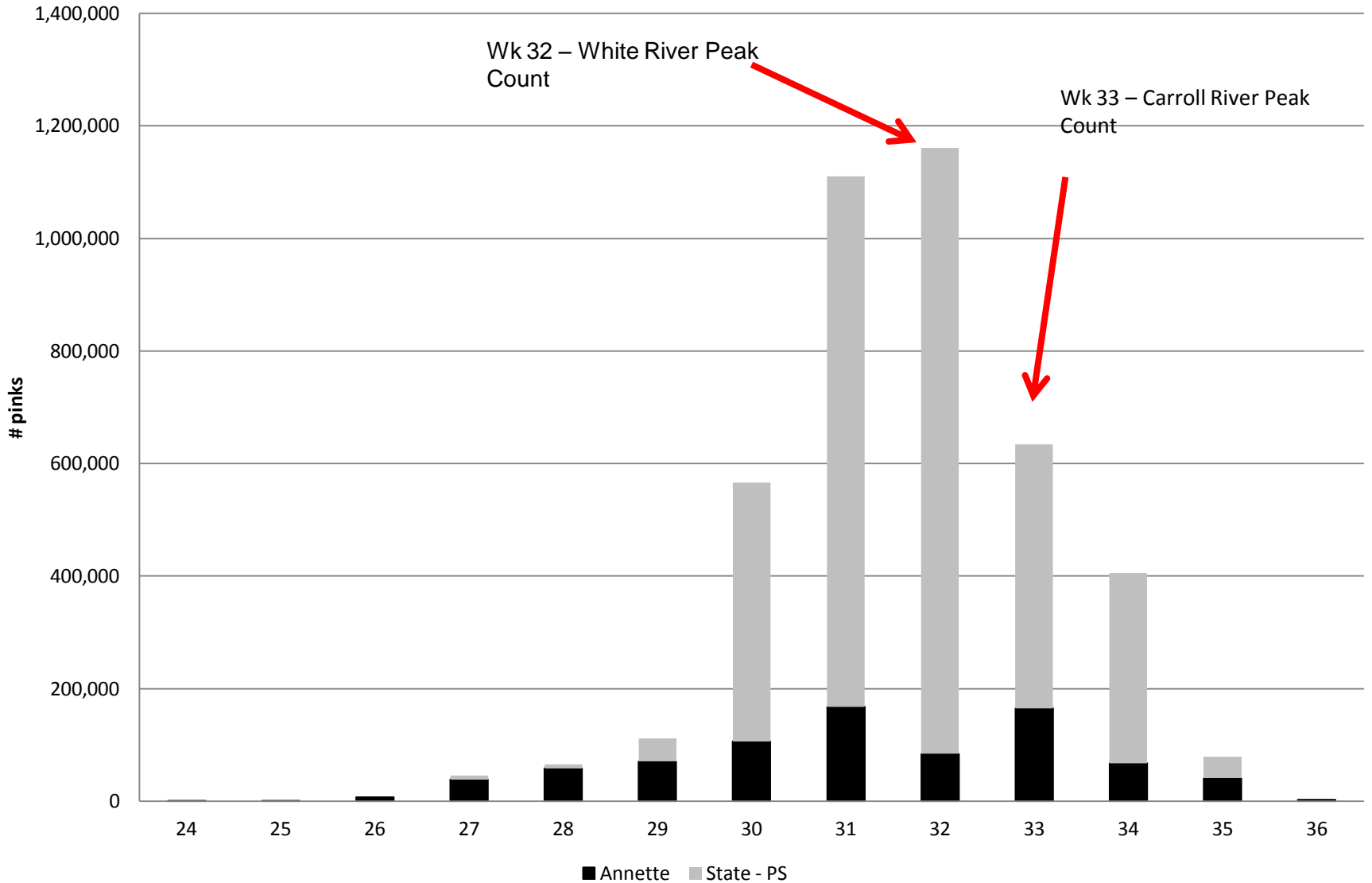
Total Net Harvest 1,621 22,091 42,374 807,877 467,859

2012		Annette Island								
								chum only		
								AI +D1		
								AI		
Stat Week	Annette Island Purse Seine vs District 1 PS							D1		
June	Sun	Mon	Tue	Wed	Thur	Fri	Sat	Hours	Hours	
25	17	18	19	20	21	22	23	State	Annette Is.	
26	24	25	26	27	28	29	30		39	
July	Sun	Mon	Tue	Wed	Thur	Fri	Sat			
27	1	2	3	4	5	6	7	15	54	
28	8	9	10	11	12	13	14	15	54	
29	15	16	17	18	19	20	21	15	54	
30	22	23	24	25	26	27	28	30	54	
31	29	30	31					54	54	
August	Sun	Mon	Tue	Wed	Thur	Fri	Sat			
31					1	2	3	4		
32		5	6	7	8	9	10	11	78	
33		12	13	14	15	16	17	18	58	
34		19	20	21	22	23	24	25	59	
35		26	27	28	29	30	31		15	
September	Sun	Mon	Tue	Wed	Thur	Fri	Sat	339	573	
35							1			
36		2	3	4	5	6	7	8	15	
37		9	10	11	12	13	14	15	14	
38		16	17	18	19	20	21	22	14	
39		23	24	25	26	27	28	29	14	
40		30							14	
									644	

							AI +D1	
							AI	
Stat Week	Annette Island Gillnet							D1
June	Sun	Mon	Tue	Wed	Thur	Fri	Sat	
24	10	11	12	13	14	15	16	
25	17	18	19	20	21	22	23	
26	24	25	26	27	28	29	30	
July	Sun	Mon	Tue	Wed	Thur	Fri	Sat	
27	1	2	3	4	5	6	7	
28	8	9	10	11	12	13	14	
29	15	16	17	18	19	20	21	
30	22	23	24	25	26	27	28	
31	29	30	31					
August	Sun	Mon	Tue	Wed	Thur	Fri	Sat	
31				1	2	3	4	
32	5	6	7	8	9	10	11	
33	12	13	14	15	16	17	18	
34	19	20	21	22	23	24	25	
35	26	27	28	29	30	31		
September	Sun	Mon	Tue	Wed	Thur	Fri	Sat	
35							1	
36	2	3	4	5	6	7	8	
37	9	10	11	12	13	14	15	
38	16	17	18	19	20	21	22	
39	23	24	25	26	27	28	29	
40	30	1	2	3				

State (D1 PS) vs Annette Island (PS + GN)

Pink Harvests 2012 - by stat week



Directed pink salmon openings occurring after September 1 in the Ketchikan area

		101	102	103	104	
	1985					
	1986					
	1987					
	1988					
	1989					
	1990					
3	1991					Dist 2, 3 and 4 through September 3.
	1992					
3	1993					Dist 1-3 September 3; Dist 4 September 2.
2	1994					Dist 2 and 3 only through September 2.
4	1995					Through September 4.
6	1996					Dist. 1-3 through September 6; Dist 4 was open through September 3.
	1997					
	1998					
5	1999					Through Sept. 5
	2000					
4	2001					Four day opening beginning on August 30-Sept. 4.
3	2002					Through September 3.
2	2003					Through September 2.
1	2004					Last day of pink salmon fishing occurred on
	2005					September 1. Day 2 of two day fishery.
	2006					
	2007					
	2008					
	2009					
	2010					
6	2011					Dist 2 closed Septeber 2; Dist 3 and 4 open through September 6.
	2012					

Fishing into September 1985-2012

