

2012 Southeast Alaska Salmon Escapements



Sockeye Salmon

Stock	Goal Type ¹	Estimated Escapement or Index	Escapement Goal Range	Comment	Enumeration Method
Hugh Smith Lake	OEG	13,400	8,000–18,000		Weir Count
McDonald Lake	SEG	57,000	55,000–120,000		Expanded Peak Survey
Stikine—mainstem	SEG	30,700	20,000–40,000		Estimated
Stikine—Tahltan	BEG	9,500	18,000–30,000	Below Goal	Weir Count
Speel Lake	BEG	5,700	4,000–13,000		Weir Count
Taku—in-river	SEG	112,500	71,000–80,000	Above Goal	Mark-recapture
Redoubt Lake	OEG	40,900	7,000–25,000	Above Goal	Weir Count
Chilkoot Lake	SEG	114,000	38,000–86,000	Above Goal	Weir Count
Chilkat Lake	BEG	107,700	70,000–150,000		Weir/Sonar Count
Situk River	BEG	62,500	30,000–70,000		Weir Count
Lost River	SEG	453	1,000	Below Goal	Peak Foot or Boat Survey
Klukshu River	BEG	17,300	7,500–15,000	Above Goal	Weir Count
East Alsek-Doame River	BEG	21,500	13,000–26,000		Peak Aerial Survey

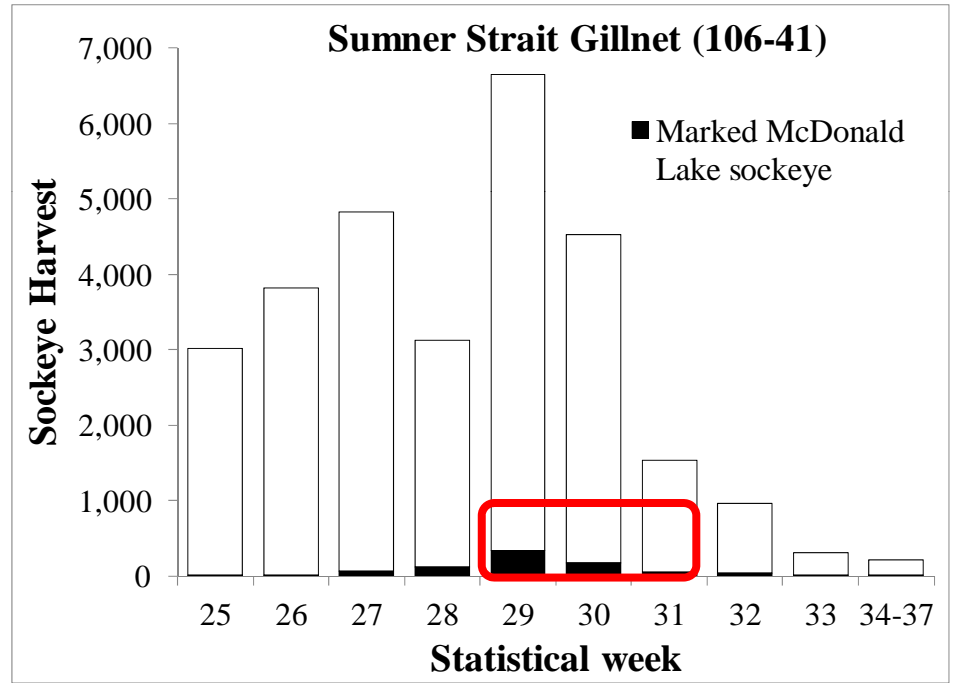
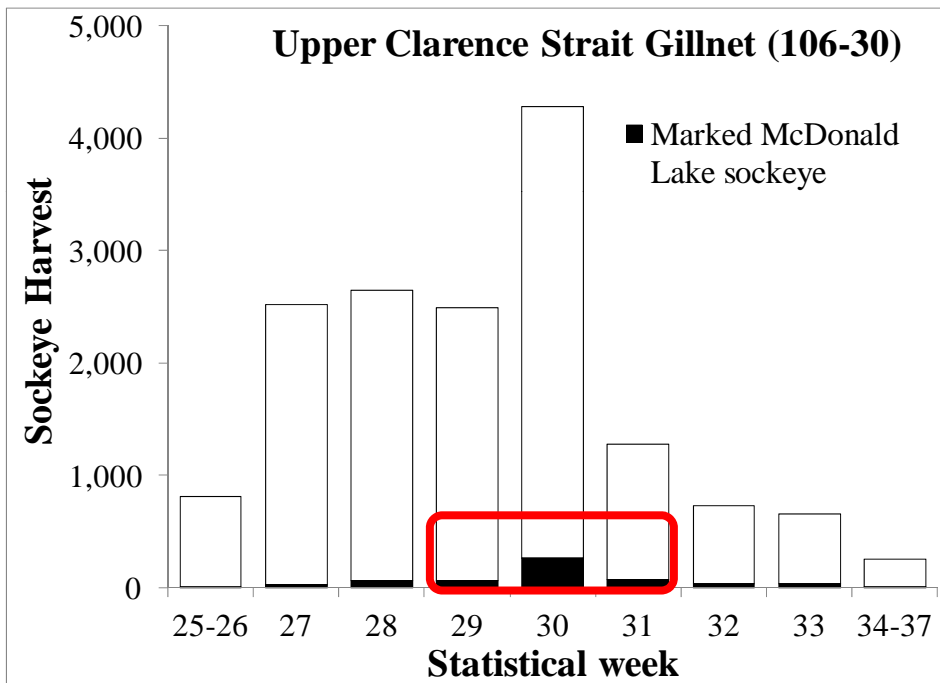
¹ Goal type includes optimal (OEG), sustainable (SEG), and biological (BEG) escapement goals.

McDonald Lake Sentinel Fish

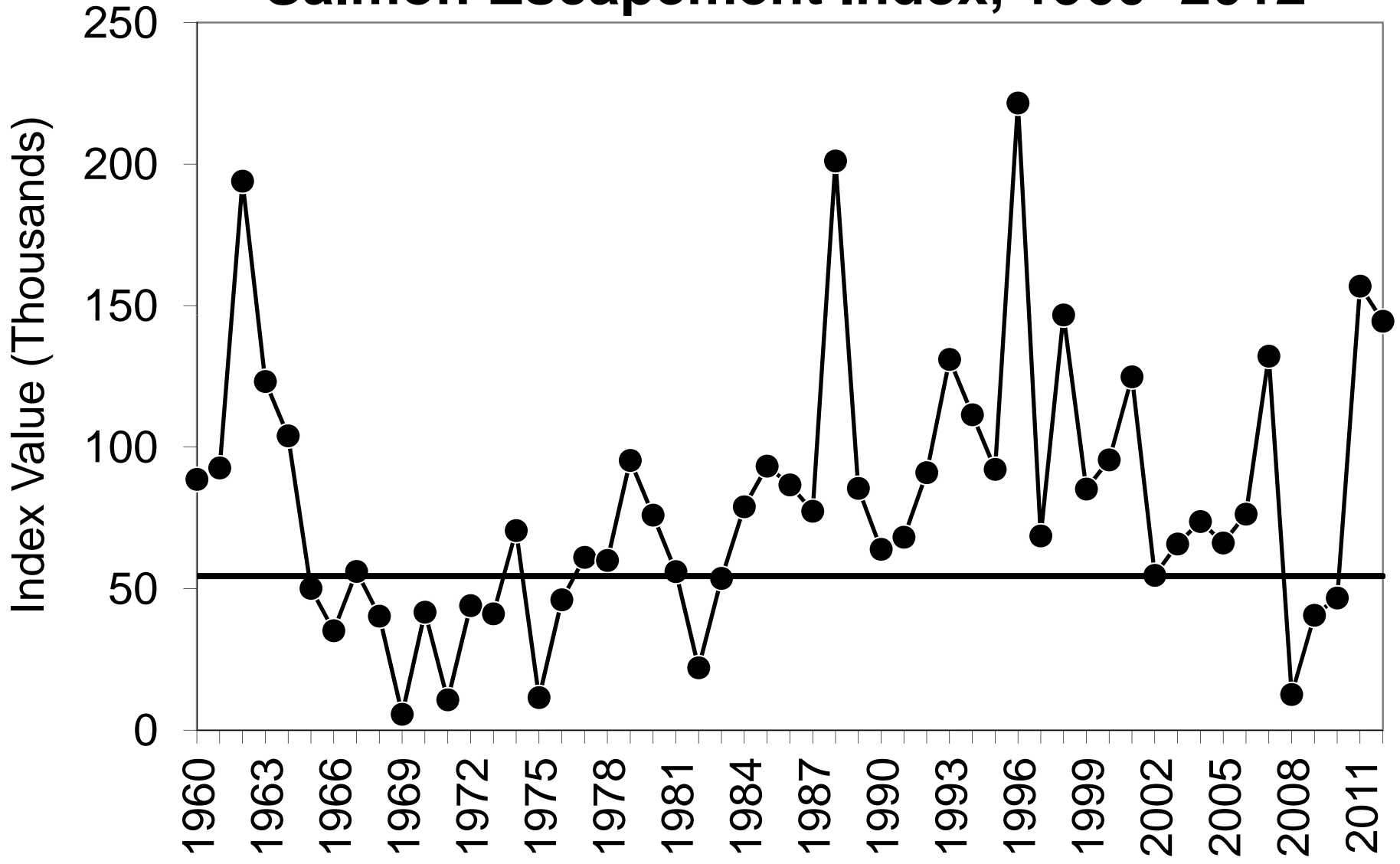
- Over 14,000 otolith samples examined from Districts 1–8 purse seine and gillnet fisheries: 227 McDonald Lake marks.
- Highest proportions and catches of McDonald Lake fish in District 6 Drift Gillnet, District 1 Purse Seine (particularly Gravina Shore).
- Estimated 3,059 stocked McDonald Lake fish in harvest. Harvest Rate=22%.

McDonald Lake Sentinel Fish

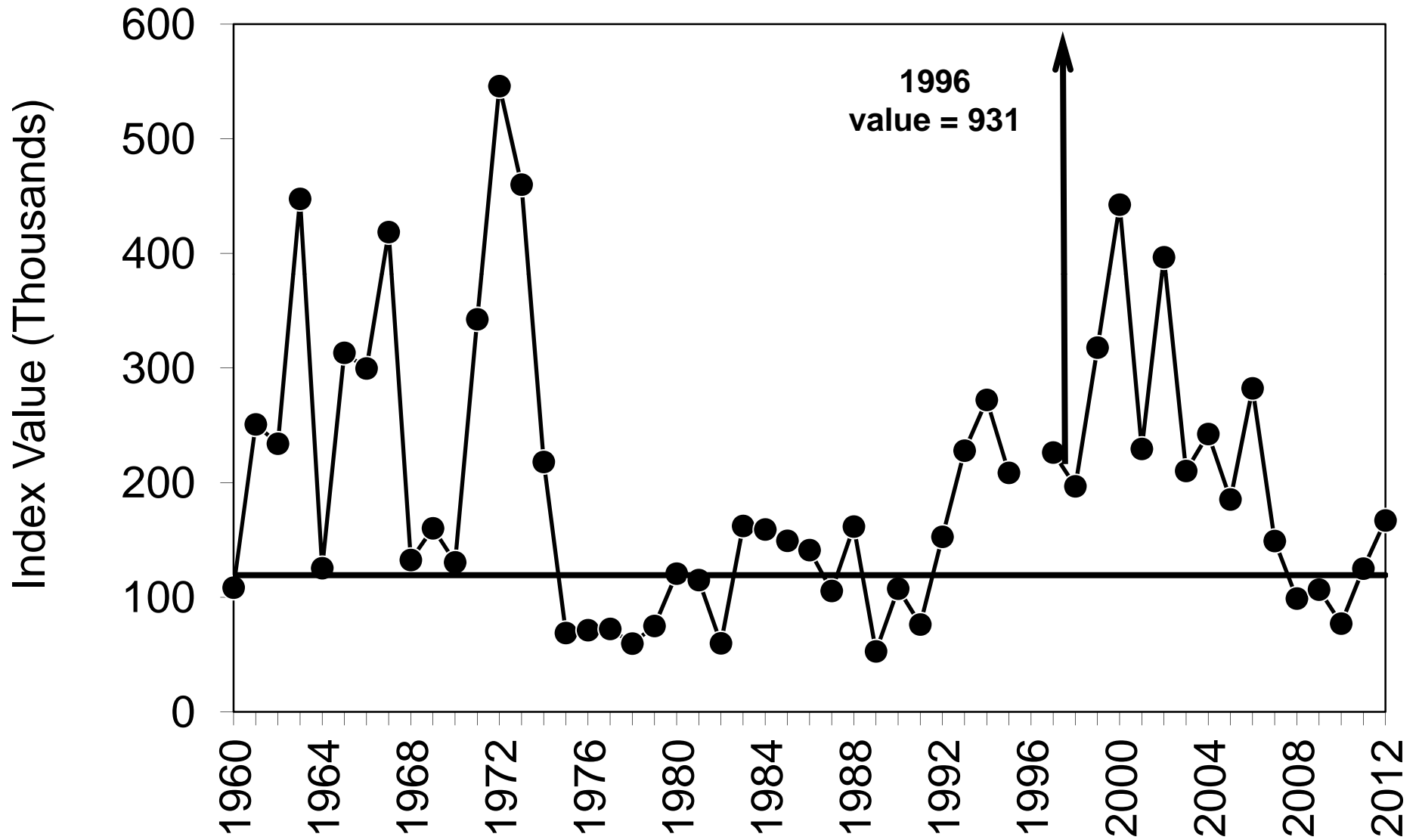
Action Plan weeks



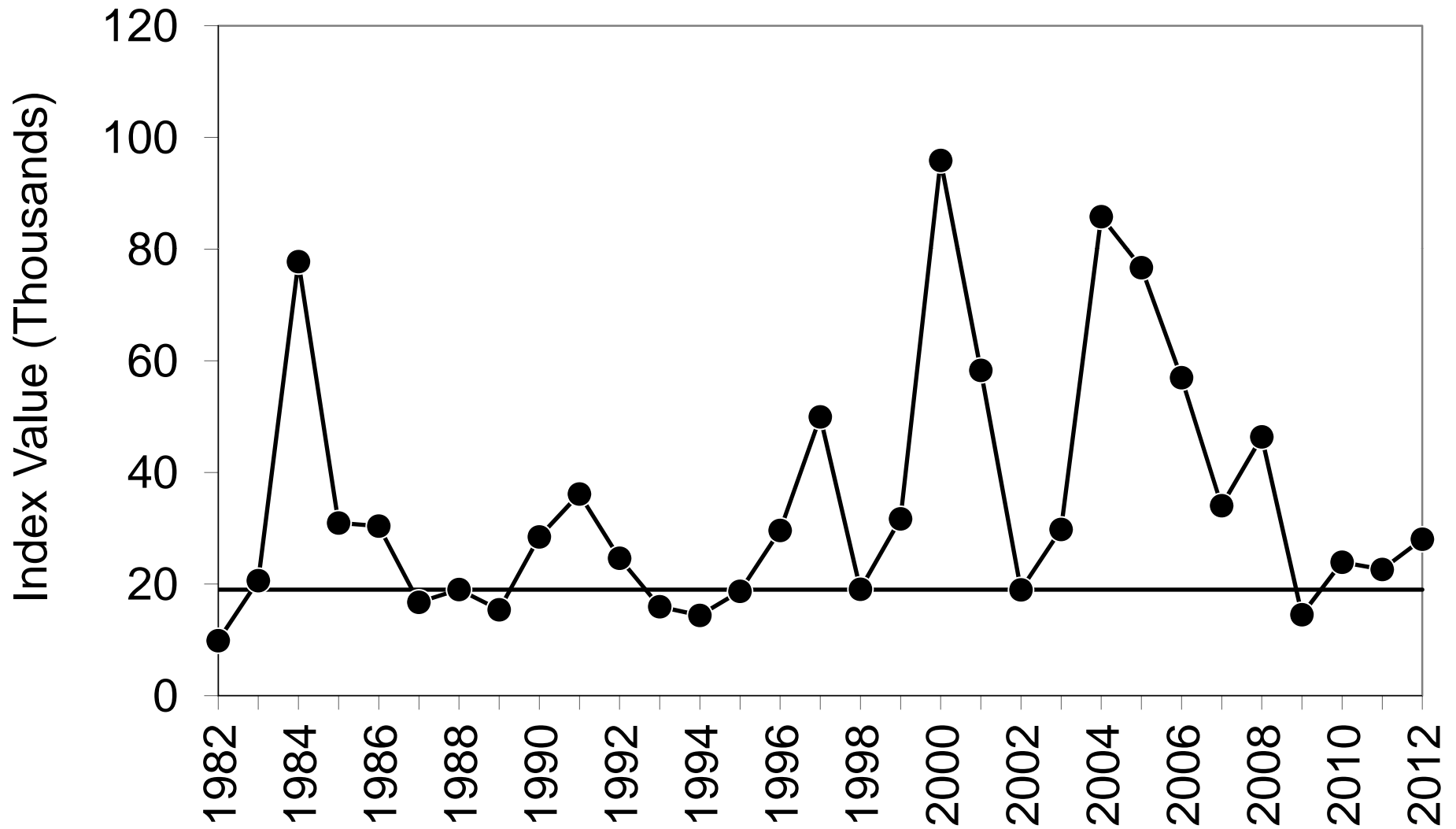
Southern Southeast Summer Chum Salmon Escapement Index, 1960–2012



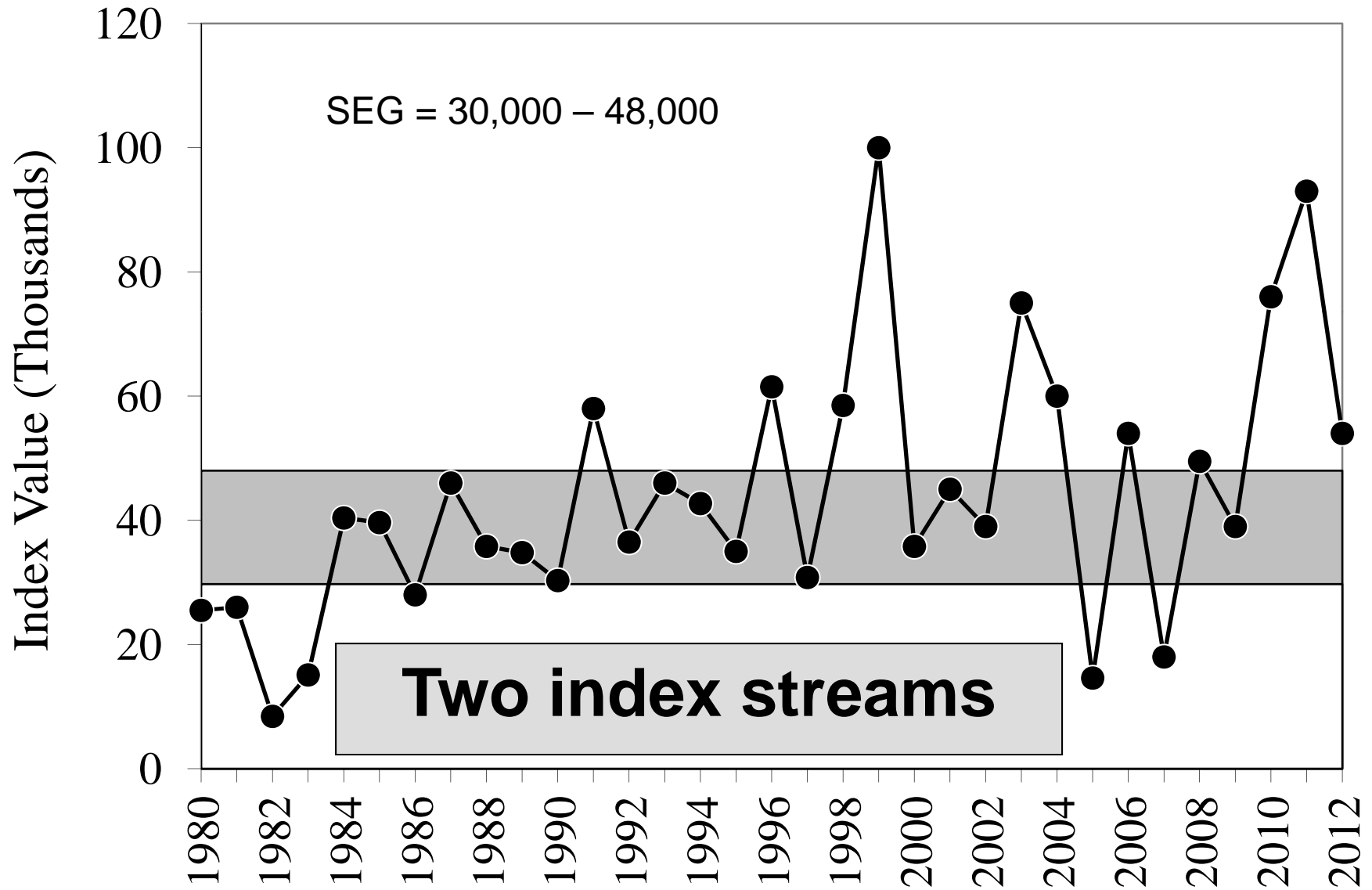
Northern Southeast Inside Summer Chum Escapement Index, 1960–2012



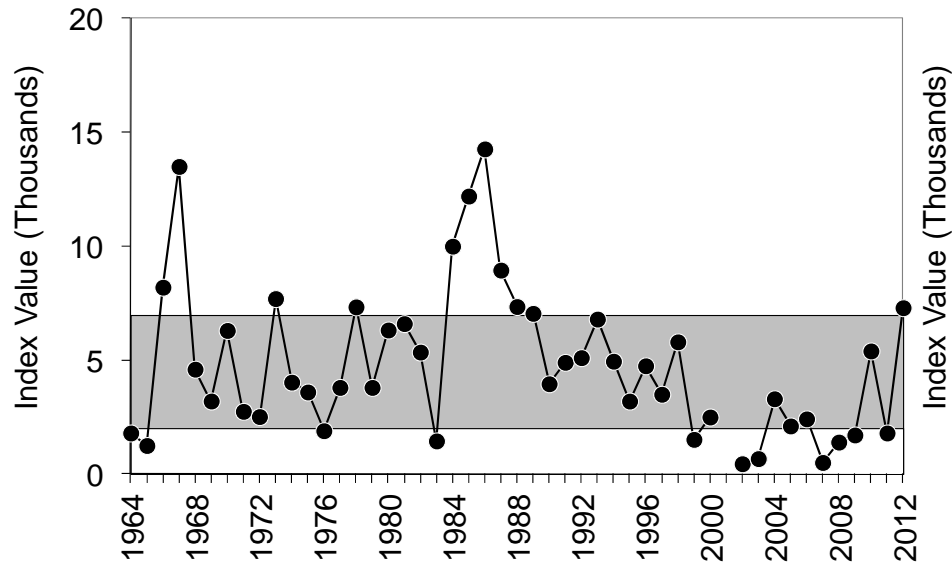
Northern Southeast Outside Summer Chum Salmon Escapement Index, 1982–2012



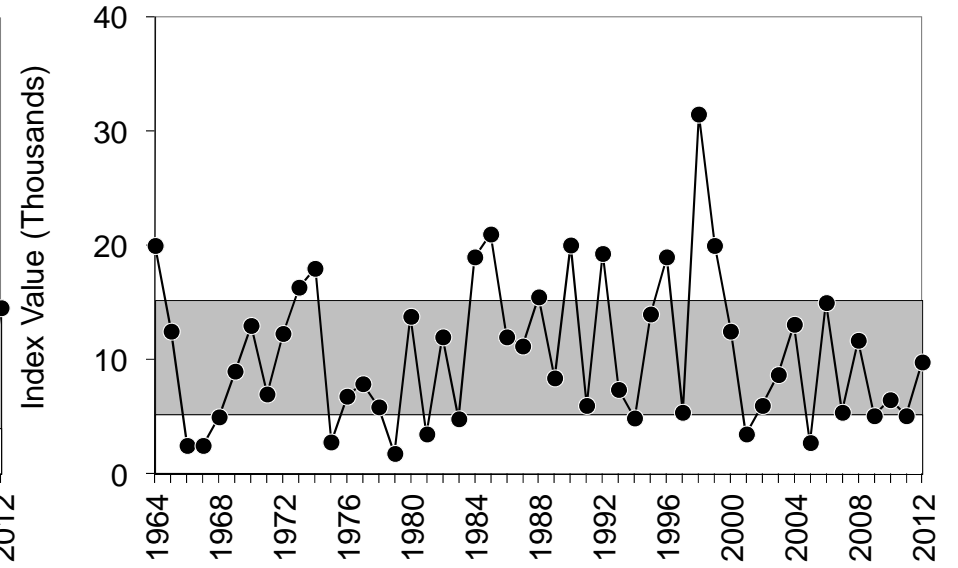
Cholmondeley Fall Chum Salmon



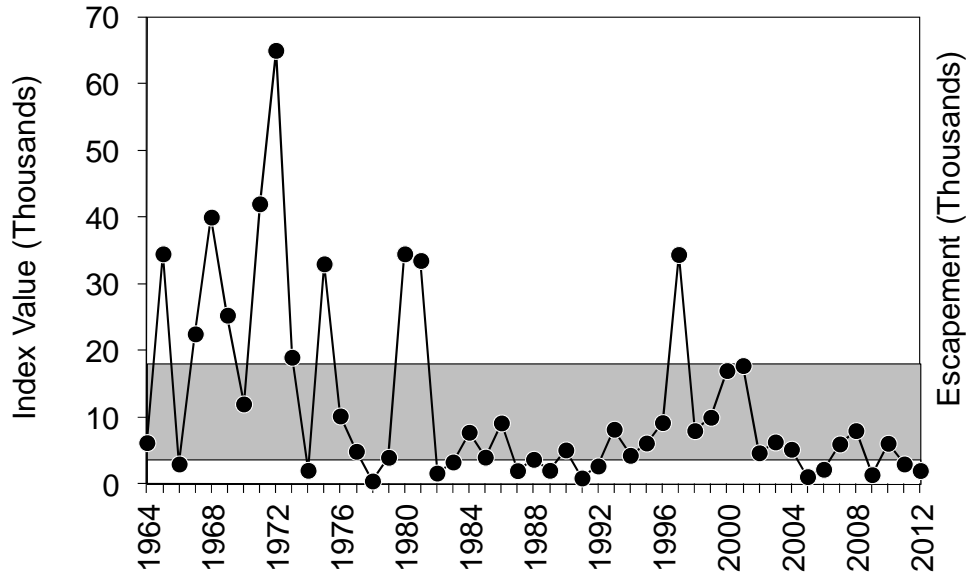
Port Camden



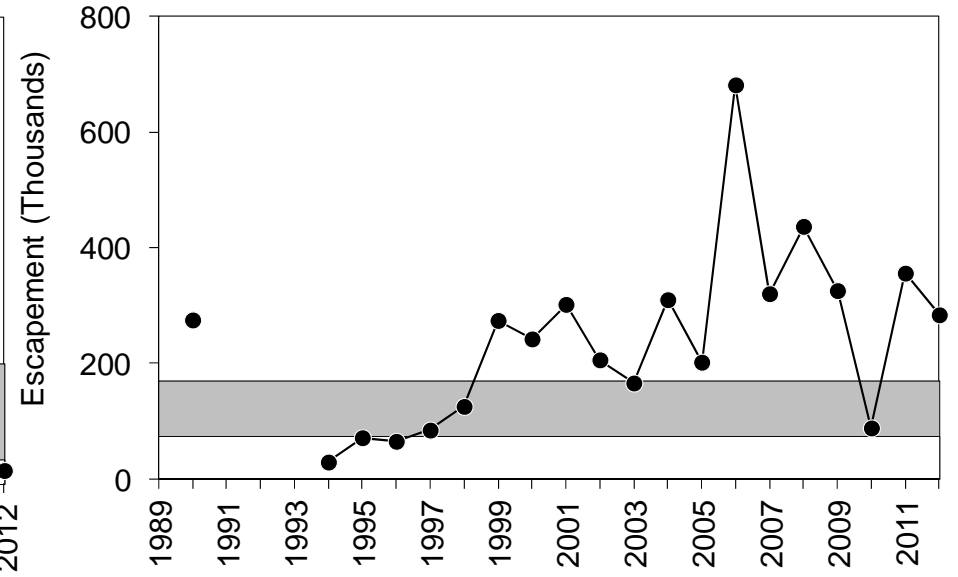
Security Bay



Excursion River



Chilkat River



Coho Salmon

System	Hugh Smith Lake	Taku River	Auke Creek	Montana Creek	Peterson Creek	Ketchikan Survey Index	Sitka Survey Index
Goal Range	500–1,600	>38,000	200–500	400–1,200	100–250	4,250–8,500	400–800
Goal Type ¹	BEG	Management Threshold	BEG	SEG	SEG	BEG	BEG
2012	1,908	68,839	837	394	190	11,950	1,157

¹. Goal type includes optimal (OEG), sustainable (SEG), and biological (BEG) escapement goals.

System	Ford Arm Lake	Berners River	Chilkat River	Lost River	Situk River	Tsiu/Tsivat rivers
Goal Range ¹	1,300–2,100	4,000–9,200	30,000–70,000	2200	3,300–9,800	10,000–29,000
Goal Type	BEG	BEG	BEG	SEG threshold	BEG	BEG
2012	2,282	5,480	38,677	2,200	3,007	11,000

¹. Goal type includes optimal (OEG), sustainable (SEG), and biological (BEG) escapement goals.

Pink Salmon

