

2014 Southeast Alaska Salmon Escapements



Photo by Leon Shaul

Sockeye Salmon

Stock	Goal Type ¹	Estimated Escapement or Index	Escapement Goal Range	Comment	Enumeration Method
Hugh Smith Lake	OEG	10,400	8,000–18,000		Weir Count
McDonald Lake	SEG	43,400	55,000–120,000	Below Goal	Expanded Foot Survey
Stikine—mainstem	SEG	26,550	20,000–40,000		Run Reconstruction
Stikine—Tahltan	BEG	40,150	18,000–30,000	Above Goal	Weir Count
Speel Lake	BEG	5,100	4,000–13,000		Weir Count
Taku—in-river	SEG	92,400	71,000–80,000	Above Goal	Mark-recapture
Redoubt Lake	OEG	19,100	7,000–25,000		Weir Count
Chilkoot Lake	SEG	105,500	38,000–86,000	Above Goal	Weir Count
Chilkat Lake	BEG	70,500	70,000–150,000		Weir/Sonar Count
Situk River	BEG	102,300	30,000–70,000	Above Goal	Weir Count
Lost River	SEG	No Peak Count	1,000		Peak Foot or Boat Survey
Klukshu River	BEG	12,200	7,500–15,000		Weir Count
East Alsek-Doame River	BEG	15,300	13,000–26,000		Peak Aerial Survey

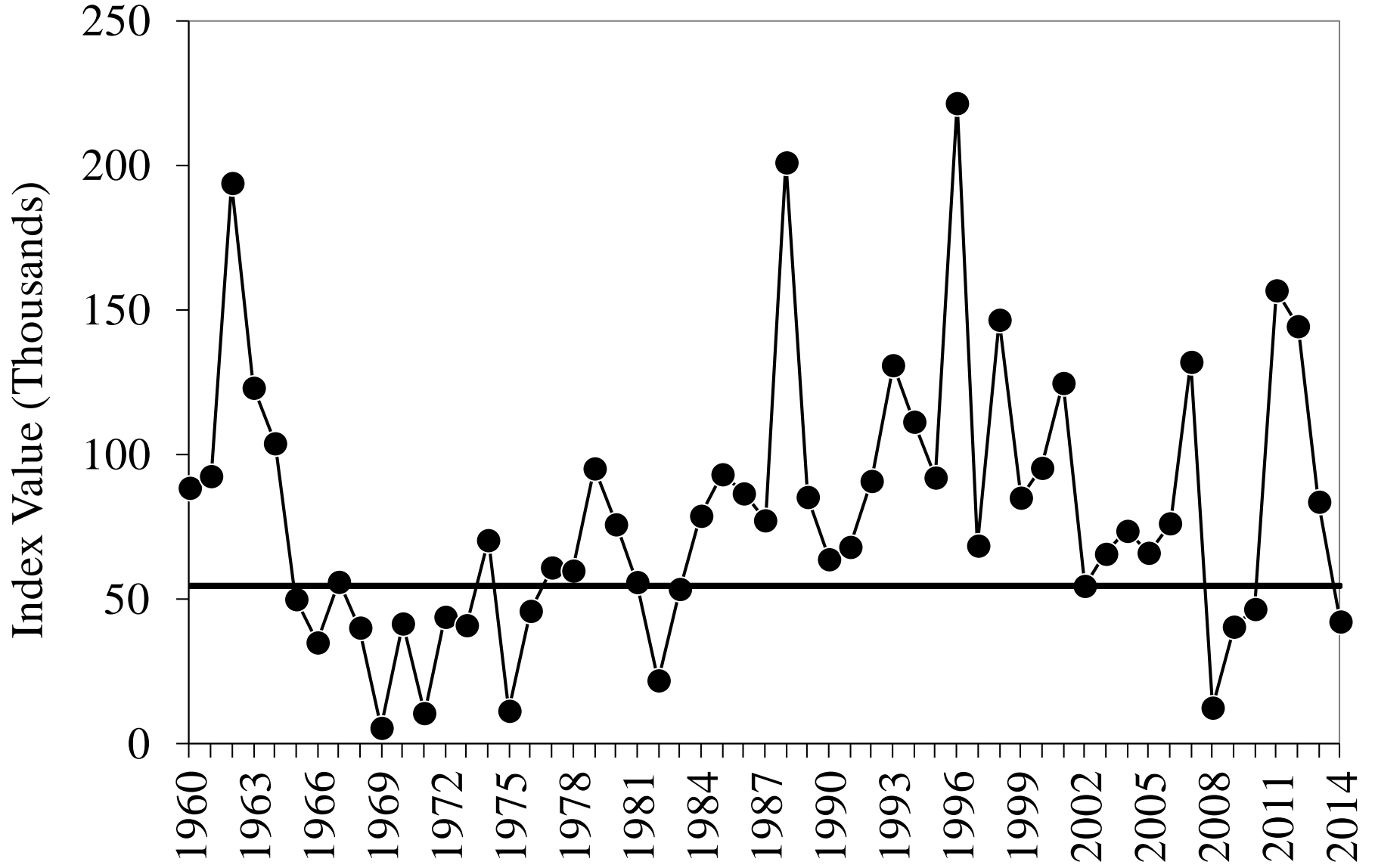
¹ Goal types include optimal (OEG), sustainable (SEG), and biological (BEG) escapement goals.

McDonald Lake Sentinel Fish

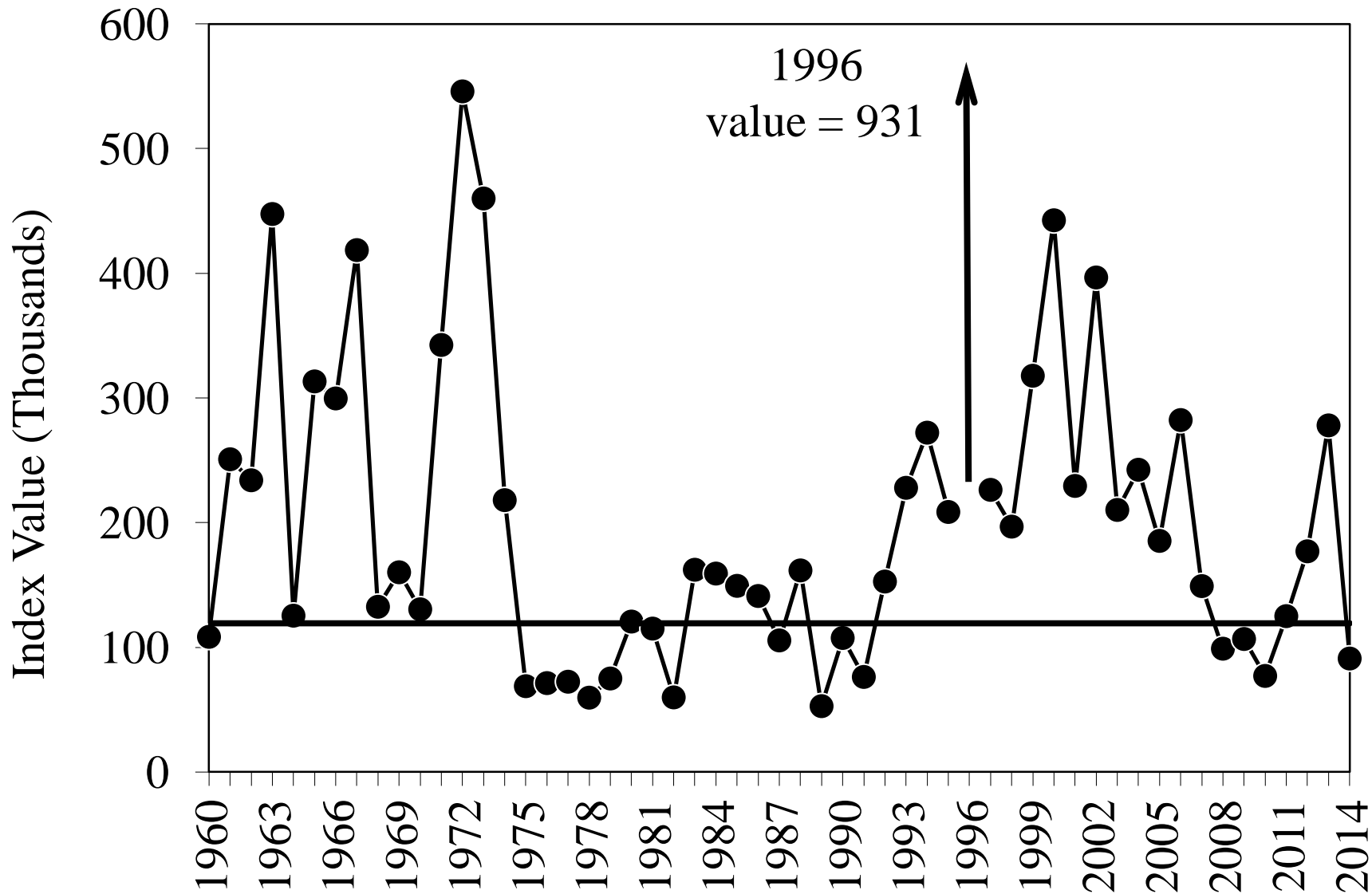
- 401 otolith samples examined from spawning grounds: 2 otolith marked fish recovered.
- Approximately 200 sentinel fish in escapement.
- **Very rough** estimate of 149 sentinel fish harvested in District 106 and 108 drift gillnet fisheries.



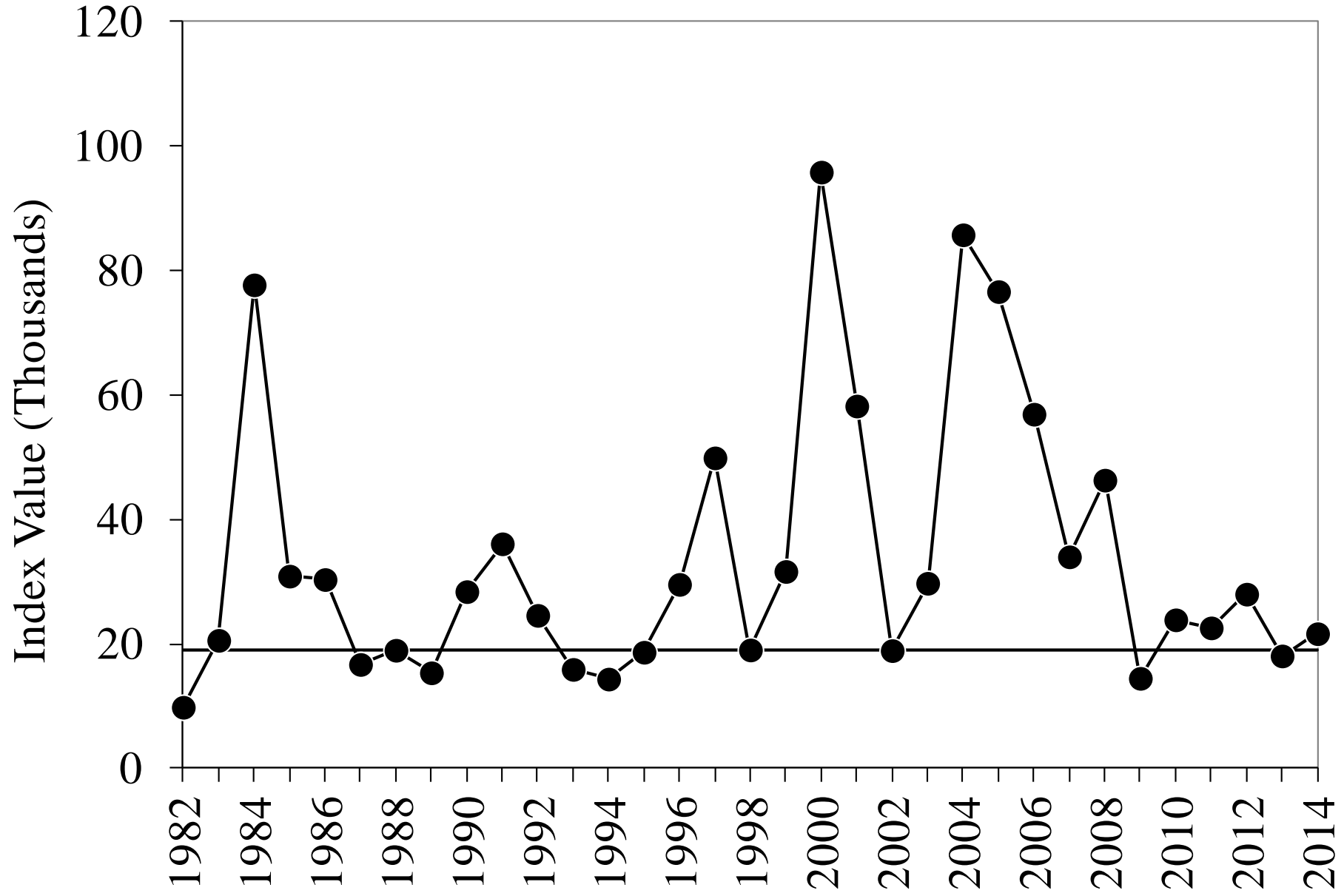
Southern Southeast Summer Chum Salmon



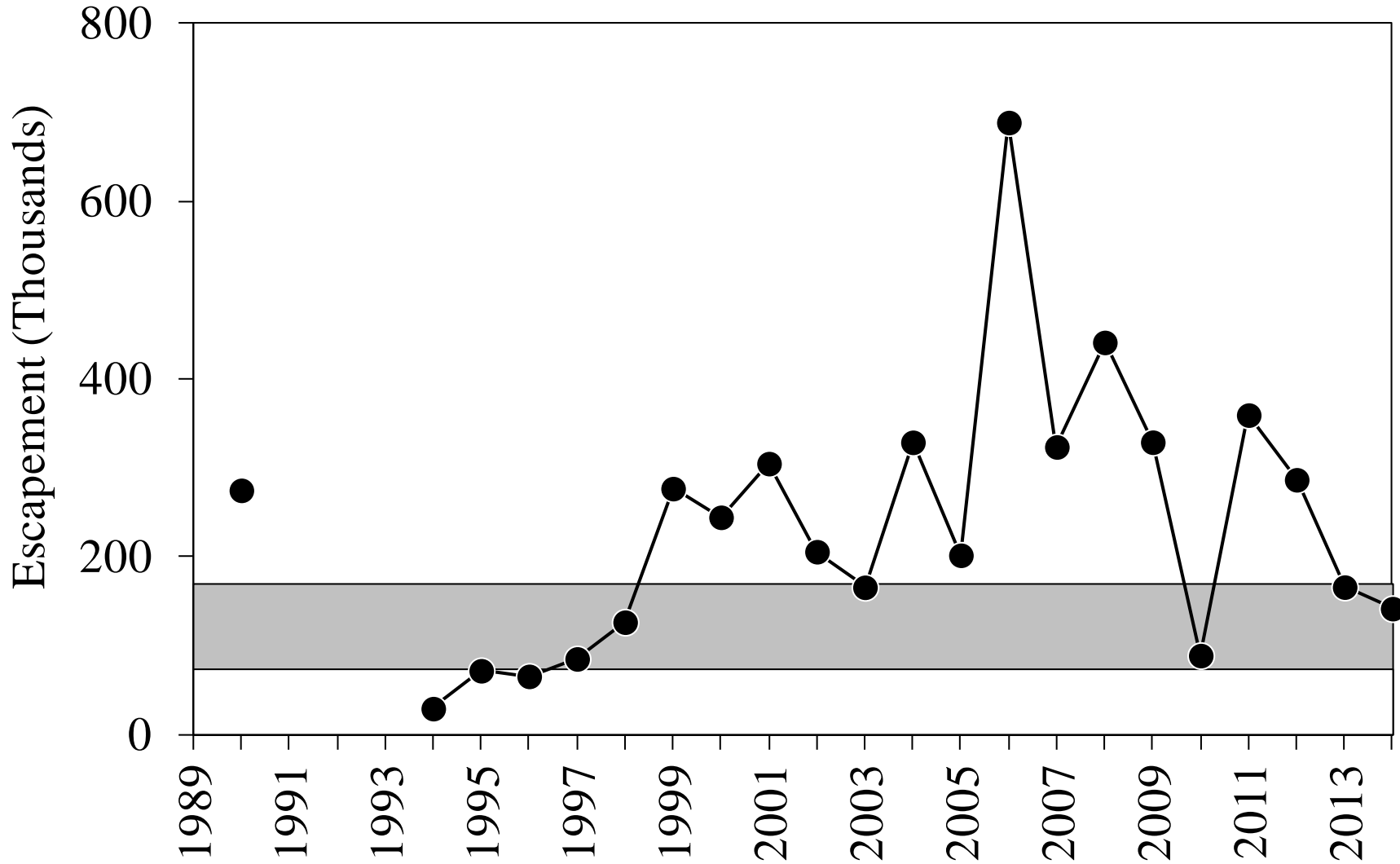
Northern Southeast Inside Summer Chum Salmon



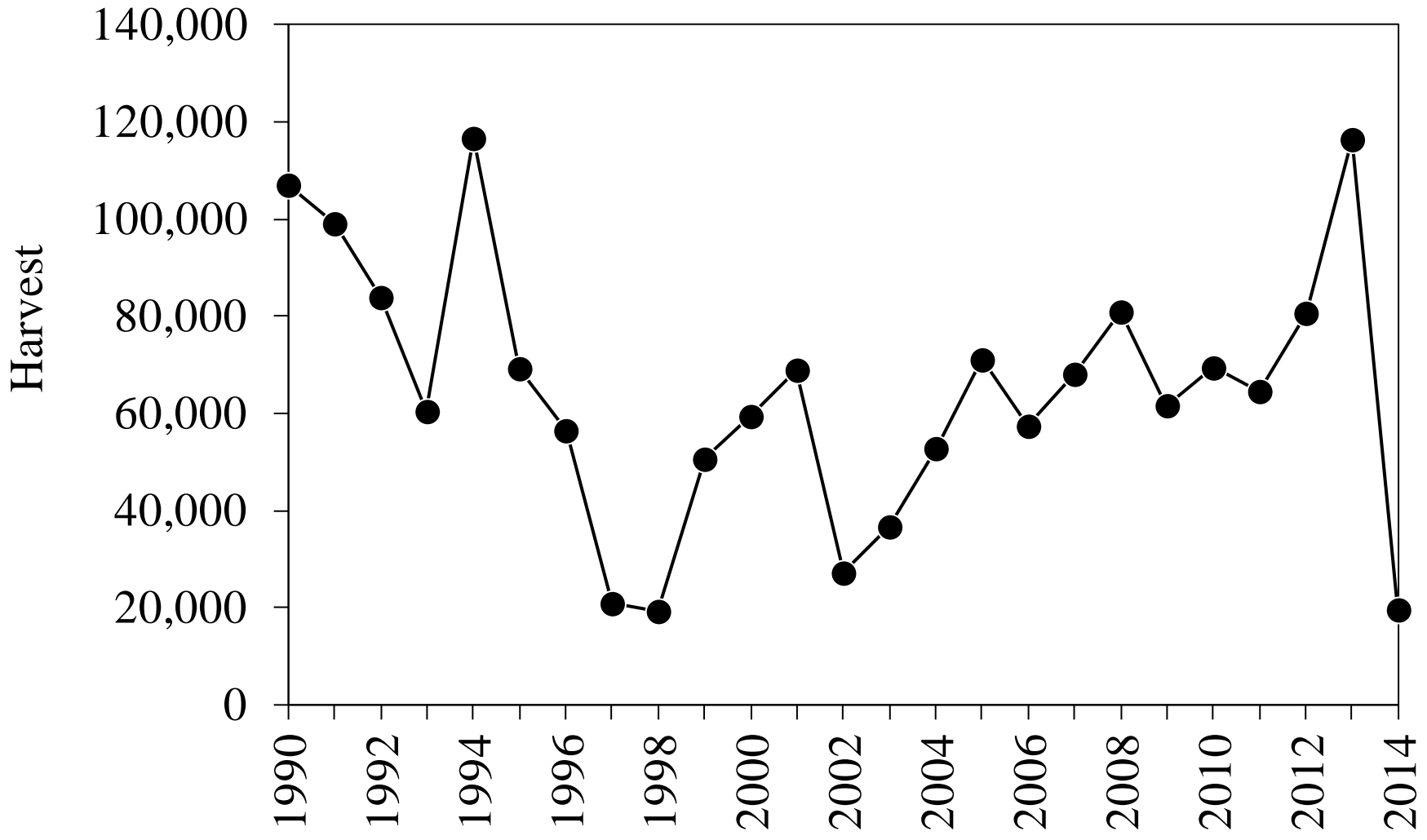
Northern Southeast Outside Summer Chum Salmon



Chilkat River Fall Chum Salmon



Lynn Canal Fall Chum Salmon Harvest, 1990-2014



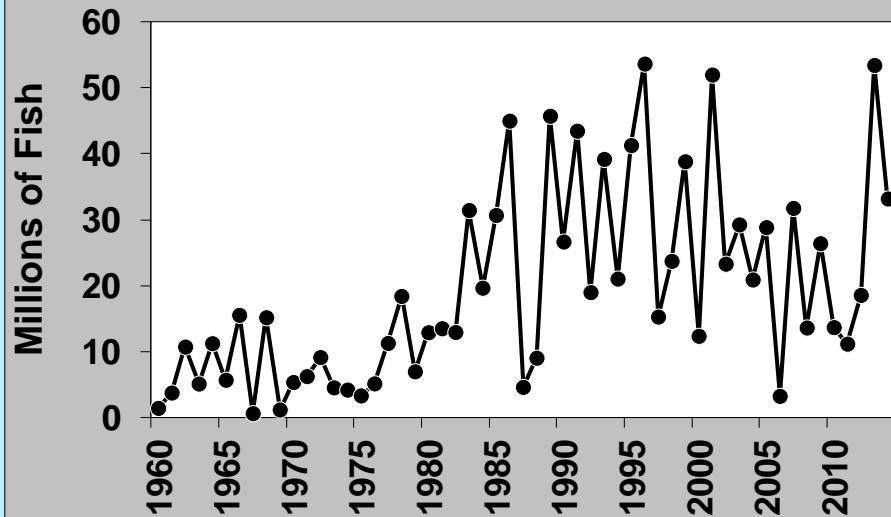
Southern Southeast Subregion

Sumner Strait

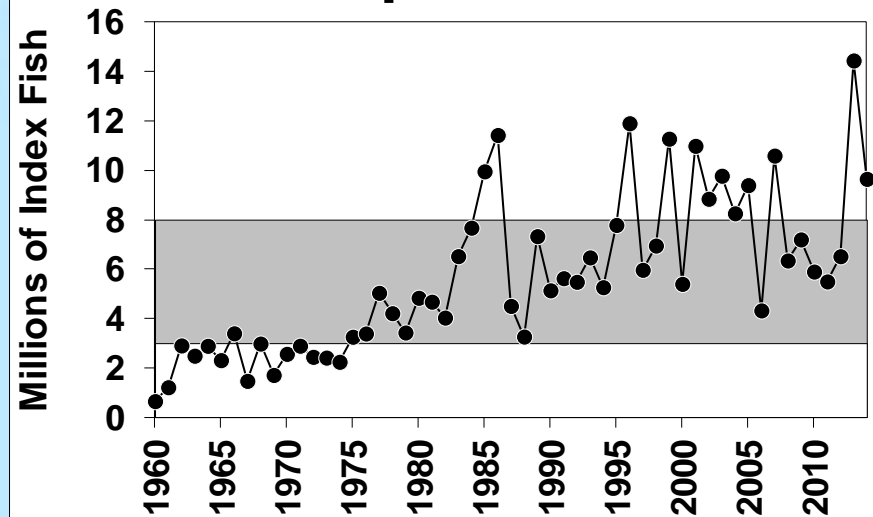
A map of the Southern Southeast Subregion, showing a complex network of waterways and landmasses. The land is colored in shades of yellow and orange, while the water is light blue. A black arrow points from the text 'Sumner Strait' to a specific narrow waterway between two landmasses in the lower right portion of the map.

Southern Southeast Subregion

Harvest



Escapement Index



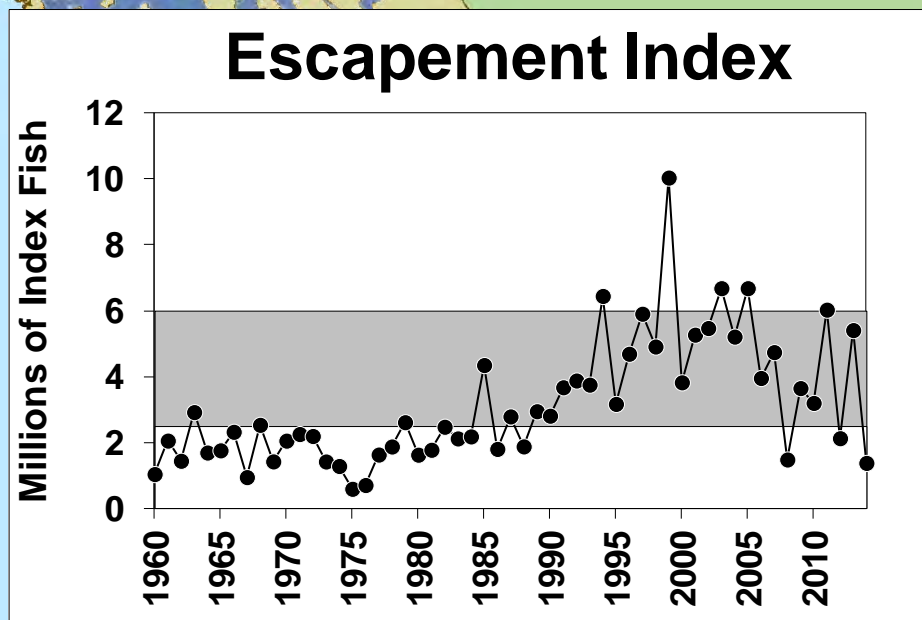
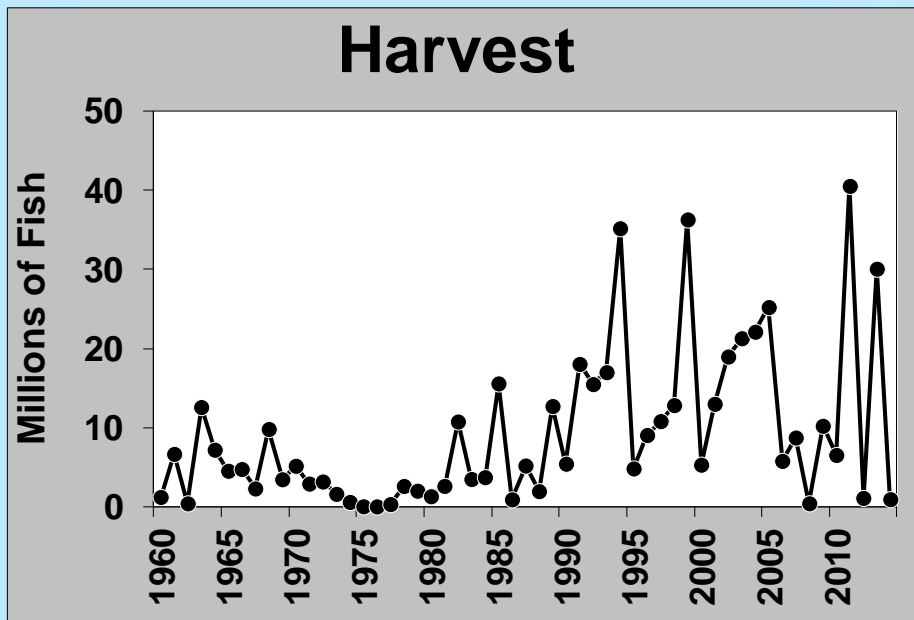
Sumner Strait

Northern Southeast Inside Subregion

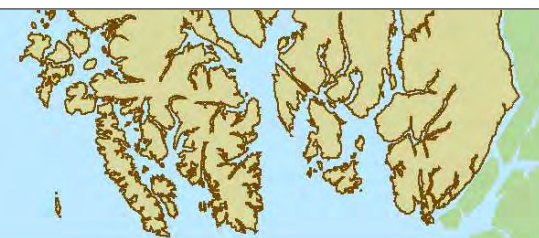
Sumner Strait

A map of the Northern Southeast Inside Subregion, showing a complex network of waterways and landmasses. The waterways are highlighted in blue, and the landmasses are shown in yellow and green. The map is oriented vertically, with the landmasses on the right and the waterways extending towards the left. A black arrow points from the text 'Sumner Strait' to a specific location on the map.

Northern Southeast Inside Subregion



Sumner Strait

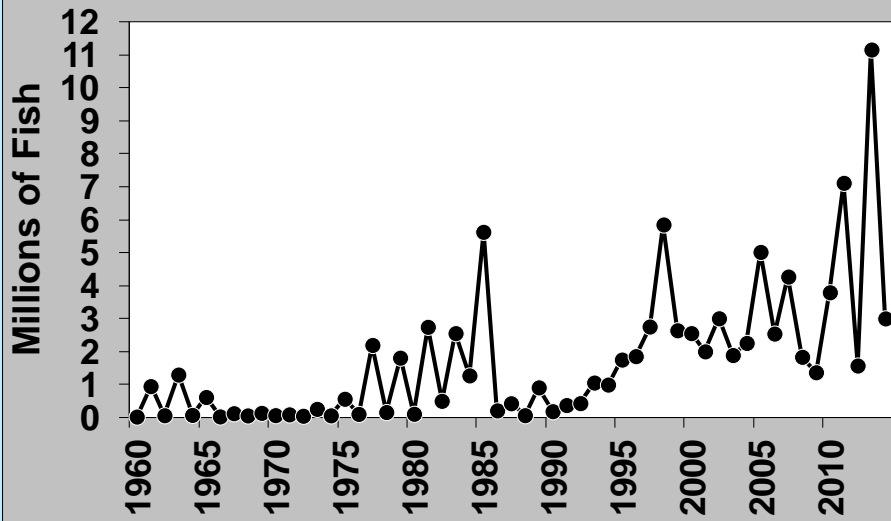


Northern Southeast Outside Subregion

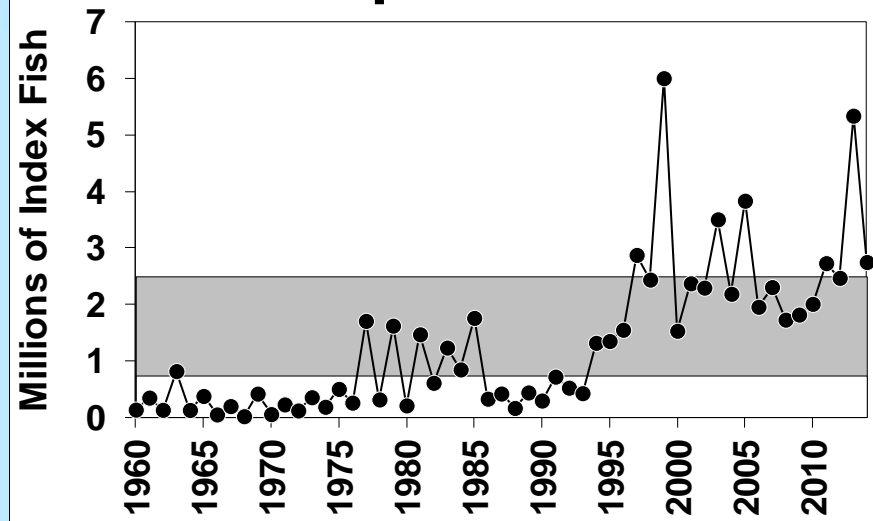


Northern Southeast Outside Subregion

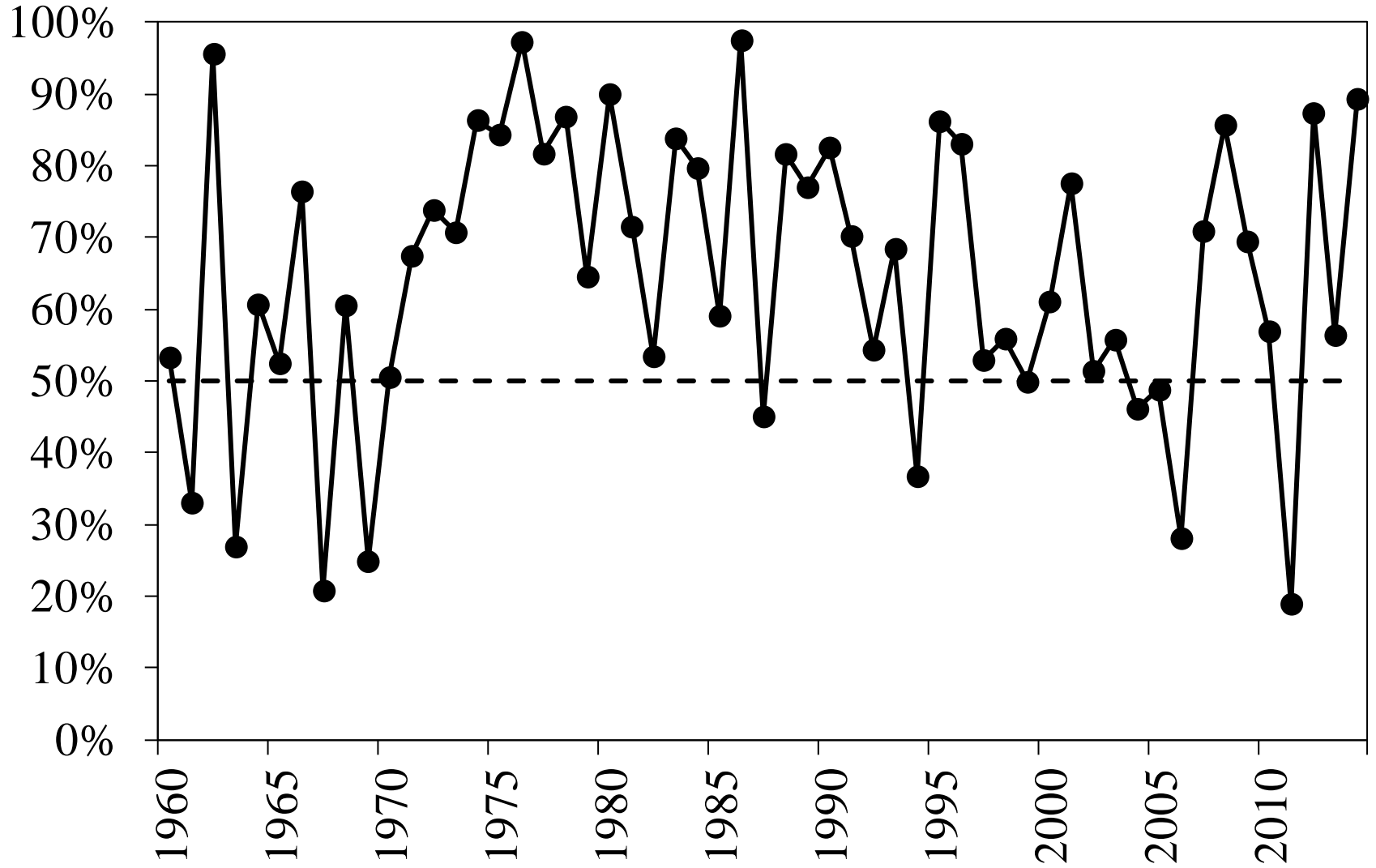
Harvest



Escapement Index

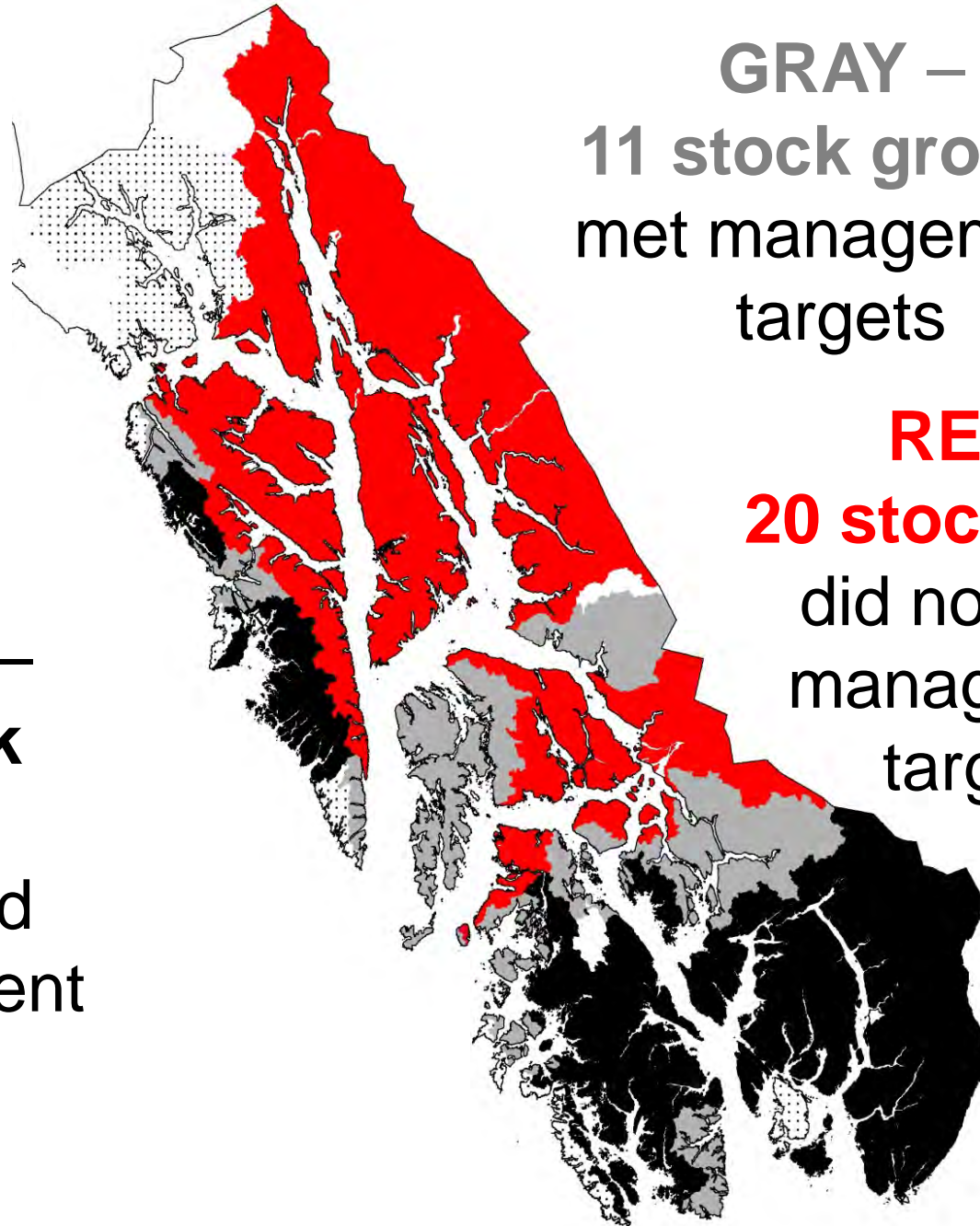


Proportion of Pink Salmon Harvested in SSE



2014

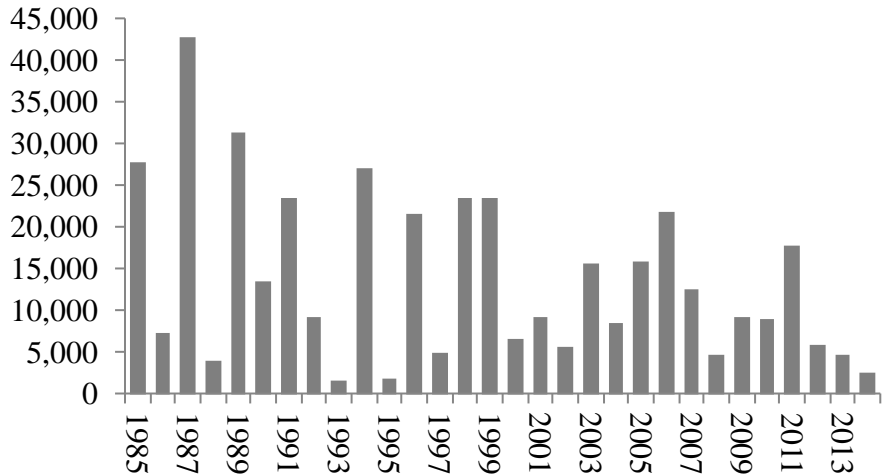
BLACK –
15 stock groups
exceeded
management
targets



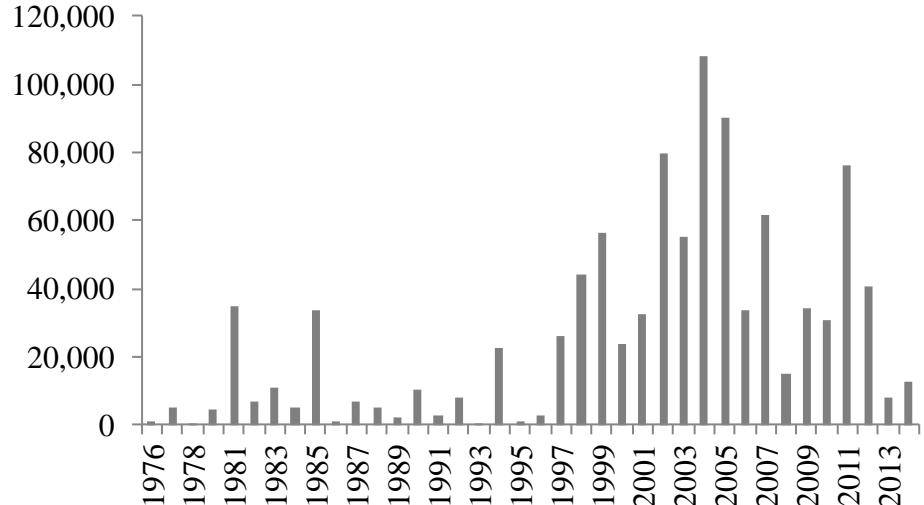
GRAY –
11 stock groups
met management
targets

RED –
20 stock group
did not meet
management
targets

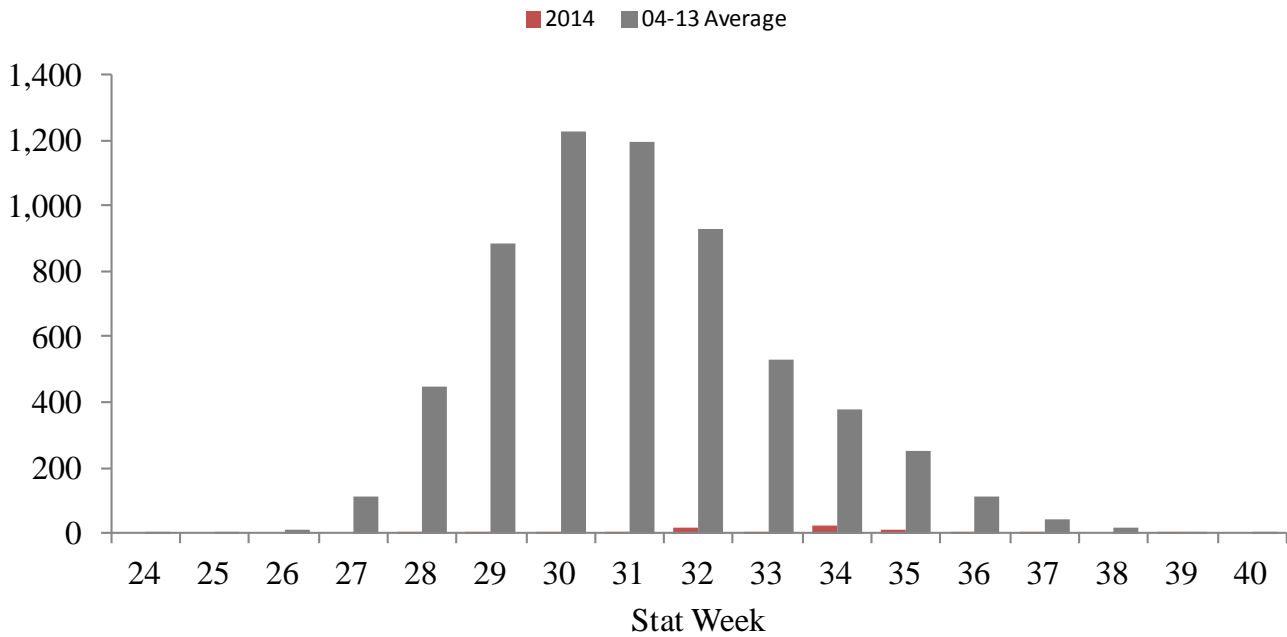
Taku River Fish Wheel Counts: Pink Salmon



Chilkoot River Weir Count: Pink Salmon



Chilkat River Fish Wheel Counts: Pink Salmon



Coho Salmon

System	Hugh Smith Lake	Taku River	Auke Creek	Montana Creek	Peterson Creek	Ketchikan Survey Index	Sitka Survey Index
Goal Range	500–1,600	50,000–90,000	200–500	400–1,200	100–250	4,250–8,500	400–800
Goal Type ¹	BEG	BEG (pending)	BEG	SEG	SEG	BEG	BEG
2014	4,110	123,600	1,533	911	284	16,675	2,161

¹. Goal types include optimal (OEG), sustainable (SEG), and biological (BEG) escapement goals.

System	Ford Arm Lake	Berners River	Chilkat River	Lost River	Situk River	Tsiu/Tsivat rivers
Goal Range ¹	1,300–2,100	4,000–9,200	30,000–70,000	2200	3,300–9,800	10,000–29,000
Goal Type	BEG	BEG	BEG	SEG threshold	BEG	BEG
2014	3,025	15,480	130,200	3,555	8,226	27,000

¹. Goal types include optimal (OEG), sustainable (SEG), and biological (BEG) escapement goals.

Personal Use Reporting Requirement

- Reporting requirements changed in 2012.
- All fish (including Steelhead) retained from commercial catches but not sold are required to be reported on fish tickets.
- No reported steelhead harvest in Districts 1–4 since new rules in effect!