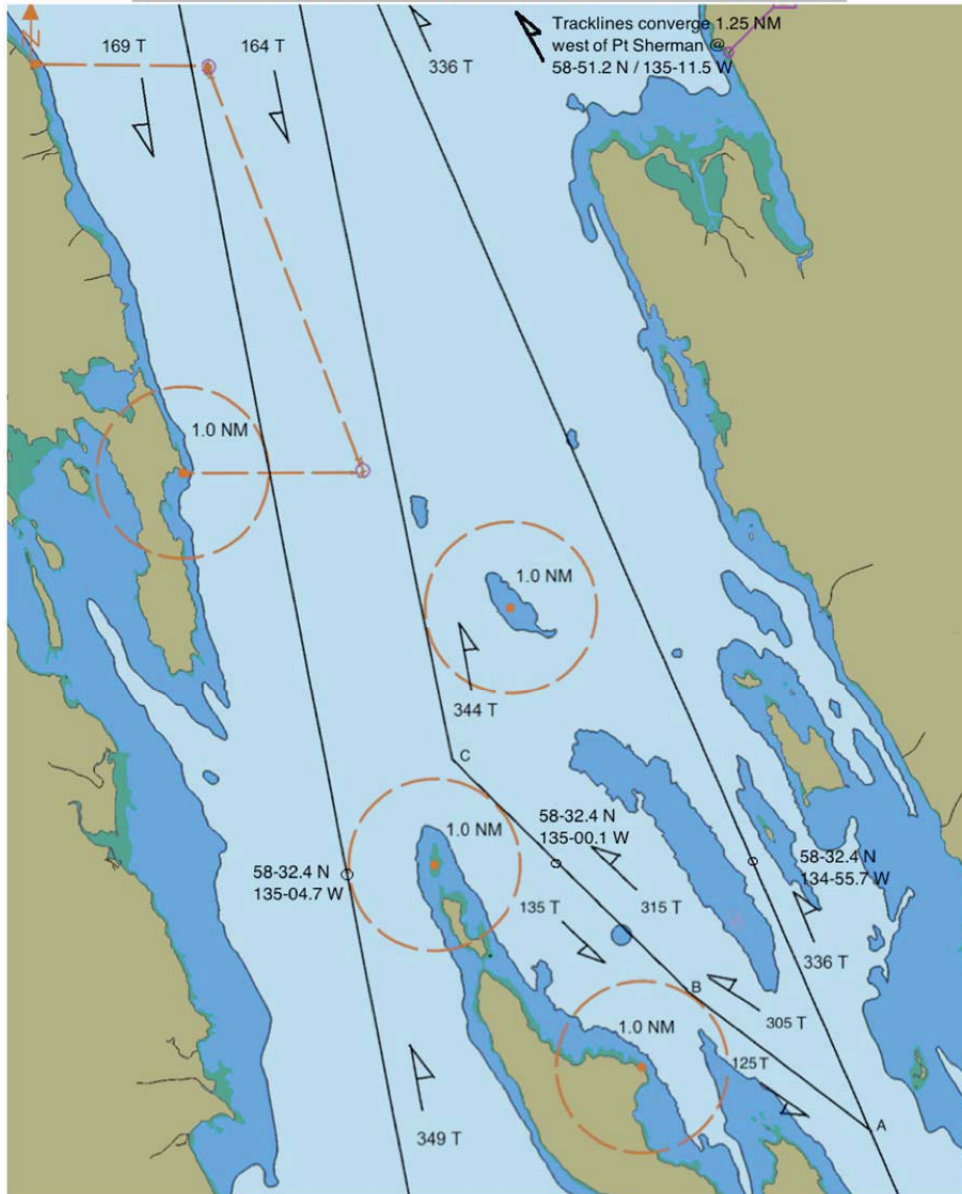


**SOUTHEAST ALASKA MARINE SAFETY TASK FORCE MAY 2015**  
**LYNN CANAL DEEP-DRAFT TRAFFIC STANDARD TRACKLINES EAST AND WEST OF LITTLE ISLAND.**  
**NOT FOR NAVIGATION – NOT FOR NAVIGATION – NOT FOR NAVIGATION**



**A:** 58-29.5N / 134-53.3 W

**B:** 58-30.9N / 134-57.1W

**C:** 58-33.3N / 135-01.8W

Voluntary vessel traffic procedures for gillnet fishing conditions and deep-draft ships. Traffic lanes, about 0.2 NM wide, are centered on the tracklines as shown.

**Deep-Draft Traffic:**

Secureite call 30-45 minutes prior to entering area and at regular intervals while transiting the area. Travel along tracklines as much as possible.

Deep Draft Vessels will avoid overtaking near Gillnet areas if possible.

**Gillnet Fishing Vessels;**

Mark net end with lights and radar reflectors;  
 Monitor VHF CH 13 & 16 for broadcasts;  
 Warn other gillnetters if they appear in the traffic lane and deep-draft ships are approaching.  
 Do not place sleep sets within or adjacent to tracklines.

**2018 Cruise Ships passing vicinity of Little Island/Poundstone Rock**

For General Information use only: Use at your own risk.

# JUNE 2018 - LITTLE IS

Sunday	Monday	Tuesday	Wednesday	Thursday	Friday	Saturday
					1	2
3	4	5	6	7	8	9
10	11	12	13	14	15	16
17 START FISHING! SB 3	18 NB 3 SB 1	19 NB 5 SB 2 SB 2100	20 NB 5 SB 4  SB 1930,2030	21 NB 4 SB 3 SB 2000	22 NB 2 SB 3 SB 2000	23 NB 3 SB 1
24 NB 3 SB 3	25 NB 3 SB 1  SB 1100, 2100	26 NB 4 SB 2 SB 2100	27 NB 5 SB 3  SB 1900, 2030	28 NB 3 SB 3 SB 2000	29 NB 4 SB 2 SB 2200	30 NB 2 SB 3
<p><b>See Lynn Canal Deep draft standard tracklines for reference - page 1 EXCEPT WHERE INDIVIDUAL TIMES NOTED (24 HOUR CLOCK USED) CHART SHOWS NUMBER OF SHIPS EXPECTED BETWEEN 0000-0300 NB: NORTHBOUND - SB: SOUTHBOUND ALL TIMES ARE APPROXIMATE AND SUBJECT TO CHANGE</b></p>						

**2018 Cruise Ships passing vicinity of Little Island/Poundstone Rock**

For General Information use only: Use at your own risk.

# JULY 2018 - LITTLE IS

Sunday	Monday	Tuesday	Wednesday	Thursday	Friday	Saturday
<b>1</b> NB 2  SB 2	<b>2</b> NB 2  SB 2 SB 2100	<b>3</b> NB 5  SB 2 SB 2100 SB 2200	<b>4</b> NB 5  SB 3 SB 1900 SB 2030	<b>5</b> NB 4  SB 3 SB 2000 SB 2100	<b>6</b> NB 2  SB 2 SB 2000	<b>7</b> NB 2  SB 1
<b>8</b> NB 2  SB 2	<b>9</b> NB 2  SB 1 SB 1100	<b>10</b> NB 5  SB 2 SB 2030 SB 2100	<b>11</b> NB 5  SB 3 SB 1900 SB 2030	<b>12</b> NB 2  SB 3 SB 2000	<b>13</b> NB 2  SB 1	<b>14</b> NB 2  SB 2
<b>15</b> NB 4  SB 2 SB 2100	<b>16</b> NB 3  SB 2 SB 1100 SB 2100	<b>17</b> NB 5  SB 2 SB 2030 SB 2100	<b>18</b> NB 5  SB 3 SB 1900 SB 2030	<b>19</b> NB 3  SB 3 SB 2000 SB 2200	<b>20</b> NB 3  SB 1 SB 2000	<b>21</b> NB 2  SB 2
<b>22</b> NB 4  SB 2 SB 2100 SB 2200	<b>23</b> NB 2  SB 1 SB 1100	<b>24</b> NB 4  SB 2 SB 2100	<b>25</b> NB 5  SB 3 SB 1900 SB 2030	<b>26</b> NB 3  SB 3 SB 2000	<b>27</b> NB 3  SB 2 SB 2100	<b>28</b> NB 3  SB 2 SB 2100
<b>29</b> NB 3  SB 2 SB 2100	<b>30</b> NB 4  SB 1 SB 1100	<b>31</b> NB 5  SB 3 SB 2100 SB 2200				

**See Lynn Canal Deep draft standard tracklines for reference - page 1  
EXCEPT WHERE INDIVIDUAL TIMES NOTED (24 HOUR CLOCK USED)  
CHART SHOWS NUMBER OF SHIPS EXPECTED BETWEEN 0000-0300  
NB: NORTHBOUND - SB: SOUTHBOUND  
ALL TIMES ARE APPROXIMATE AND SUBJECT TO CHANGE**

**2018 Cruise Ships passing vicinity of Little Island/Poundstone Rock**

For General Information use only: Use at your own risk.

# AUG 2018 - LITTLE IS

Sunday	Monday	Tuesday	Wednesday	Thursday	Friday	Saturday
			<b>1</b> NB 5  SB 3 SB 1900 SB 2030	<b>2</b> NB 3  SB 3 SB 2000	<b>3</b> NB 2  SB 2 SB 2000	<b>4</b> NB 2  SB 1
<b>5</b> NB 4  SB 2 SB 2100 SB 2200	<b>6</b> NB 2  SB 1 SB 1100	<b>7</b> NB 4  SB 2 SB 2100	<b>8</b> NB 5  SB 3 SB 1900 SB 2030	<b>9</b> NB 5  SB 3 SB 2000, 2100	<b>10</b> NB 2  SB 3	<b>11</b> NB 2  SB 2
<b>12</b> NB 2  SB 2 SB 2100	<b>13</b> NB 5  SB 1 SB 2100, 2200 SB 2230	<b>14</b> NB 4  SB 2 SB 2100	<b>15</b> NB 5  SB 3 SB 1900, 2030	<b>16</b> NB 3  SB 3 SB 2000	<b>17</b> NB 2  SB 2 SB 2000	<b>18</b> NB 3  SB 1
<b>19</b> NB 4  SB 3 SB 2100, 2200	<b>20</b> NB 3  SB 1 SB 1100	<b>21</b> NB 5  SB 3 SB 2100, 2200	<b>22</b> NB 5  SB 3 SB 1900, 2030	<b>23</b> NB 3  SB 3 SB 2000	<b>24</b> NB 2  SB 2	<b>25</b> NB 2  SB 2
<b>26</b> NB 2  SB 2	<b>27</b> NB 5  SB 2 SB 1100, 2100 SB 2200	<b>28</b> NB 5  SB 2 SB 2100	<b>29</b> NB 5  SB 4 SB 1900, 2030	<b>30</b> NB 3  SB 3 SB 2000	<b>31</b> NB 2  SB 2 SB 2000	

**See Lynn Canal Deep draft standard tracklines for reference - page 1  
EXCEPT WHERE INDIVIDUAL TIMES NOTED (24 HOUR CLOCK USED)  
CHART SHOWS NUMBER OF SHIPS EXPECTED BETWEEN 0000-0300  
NB: NORTHBOUND - SB: SOUTHBOUND  
ALL TIMES ARE APPROXIMATE AND SUBJECT TO CHANGE**

**2018 Cruise Ships passing vicinity of Little Island/Poundstone Rock**

For General Information use only: Use at your own risk.

# SEPT 2018 - LITTLE IS

Sunday	Monday	Tuesday	Wednesday	Thursday	Friday	Saturday
						1 NB 2  SB 1
2 NB 3  SB 2 SB 2100	3 NB 3  SB 1 SB 1100, 1900	4 NB 2  SB 2 SB 2100	5 NB 5  SB 3 SB 1900, 2030	6 NB 4  SB 3 SB 2000	7 NB 4  SB 3 SB 2000, 2100	8 NB 3  SB 2
9 NB 2  SB 3	10 NB 3  SB 1 SB 1100, 2000	11 NB 4  SB 2 SB 2100	12 NB 3  SB 3 SB 2030	13 NB 3  SB 2 NB 2000, 2030	14 NB 1  SB 1	15 NB 2
16 NB 1  SB 2 SB 2200	17 NB 1  SB 0	18 NB 2  SB 1	19 NB 4  SB 1 SB 1930	20 NB 1  SB 3 SB 2000	21 NB 1  SB 0 SB 2000	22 NB 1  SB 0
23 NB 0  SB 1	24	25	26	27	28	29
30	<p><b>See Lynn Canal Deep draft standard tracklines for reference - page 1</b>  <b>EXCEPT WHERE NOTED INDIVIDUAL TIMES (24 HR CLOCK)</b>  <b>CHART SHOWS NUMBER OF SHIPS EXPECTED BETWEEN 0000-0300</b>  <b>NB: NORTHBOUND - SB: SOUTHBOUND</b>  <b>ALL TIMES ARE APPROXIMATE AND SUBJECT TO CHANGE</b></p>					